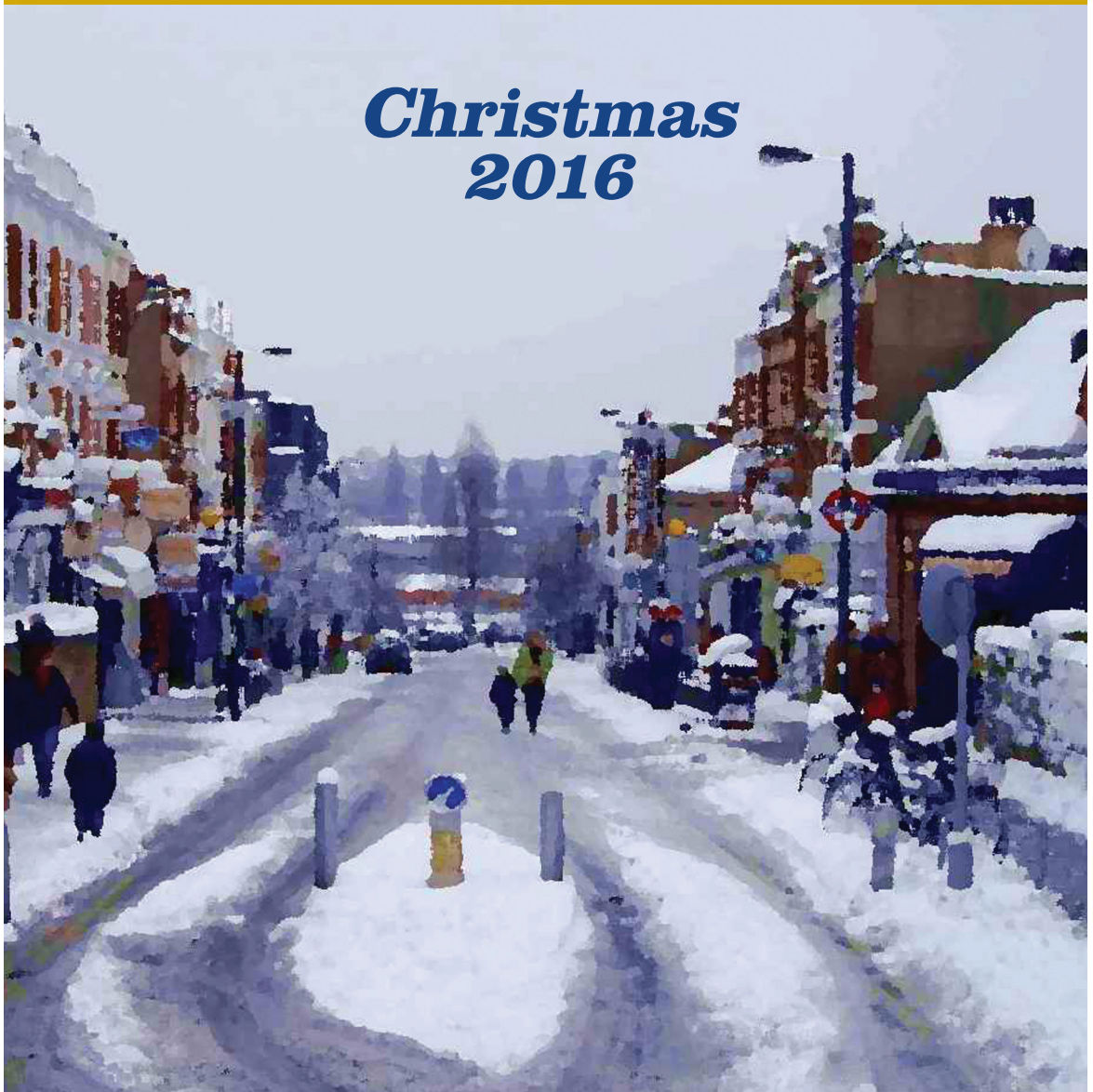




# Wimbledon Park Residents' Association

***Christmas  
2016***



[wimbledonpark.com](http://wimbledonpark.com)

# sps timber windows



■ box sash windows ■ casement windows ■ doors ■ plantation shutters



■ sps timber windows is a recognised specialist in the manufacture, fitting and finishing of premium quality, energy efficient, bespoke Accoya® wood box sash windows, casement windows, front doors, French doors and folding sliding doors.

- Accurate representation of period designs and features.
- Double-glazed and draught proofed, to "A" rated specifications.
- We also supply custom made plantation shutters.
- Contact us for a free, no obligation quotation.

■ **Wimbledon Park Residents' Association Christmas offer:**

Receive up to £150 John Lewis Vouchers (T&C's apply).

Quote offer code WPRA.

**Showroom** 61 Revelstoke Road, Wimbledon Park, SW18 5NL

[www.spstimmerwindows.co.uk](http://www.spstimmerwindows.co.uk)

[info@spstimmerwindows.co.uk](mailto:info@spstimmerwindows.co.uk)

020 8879 3443



# **Christmas edition 2016**

## **Contents**

<b>Chairman's Report</b>	<b>4 &amp; 5</b>
<b>Update from Stephen Hammond MP</b>	<b>6</b>
<b>Transparency</b>	<b>8</b>
<b>Report on Durnsford Rec</b>	<b>10</b>
<b>Wandle Valley Forum</b>	<b>12 &amp; 14</b>
<b>Wimbledon Society membership offer</b>	<b>16</b>
<b>Do we need basement developments?</b>	<b>18 &amp; 19</b>
<b>Crime figures</b>	<b>22,24 &amp; 26</b>
<b>Why join the Residents' Association?</b>	<b>28,29,30 &amp; 32</b>
<b>Boundary Commission proposals</b>	<b>32,33,36 &amp; 38</b>
<b>Funding cuts for Pharmacies</b>	<b>34</b>
<b>WPRA Committee</b>	<b>40</b>
<b>Index of advertisers</b>	<b>42</b>

**All advertising enquiries to: Pamela Healy  
Email: [pam.2015@outlook.com](mailto:pam.2015@outlook.com)**

**Editorial help needed. Contact Iain Simpson on 020 8947 1301  
email: [iainsimpson@imi-consulting.com](mailto:iainsimpson@imi-consulting.com)**

## Chairman's Report

### *AGM report*

The AGM was held on the 18<sup>th</sup> October. Turnout was fair - about the usual number of around 40. We were pleased to welcome our MP Stephen Hammond, who very kindly agreed, at short notice, to speak to us about the recently announced Boundary Commission (BC) proposals and also the latest on Crossrail 2. Since then the movement on Crossrail 2 has stalled somewhat while they revise the business plan and try to reduce costs. Also since then we have encouraged residents to respond to the BC consultation. The Association has responded and some of the submission is contained in this newsletter on pages 33,36 and 38. The Association continues to be proactive on behalf of residents. The finances are in a healthy state and this year we made a small overall surplus. Plans to convert to a charity company have been slow to move ahead but we hope to achieve this in the next few months.

I also reported briefly on the financial position of the Community Trust. Hiring of the hall has been brisk and in addition to several regular hirers throughout the weekdays, the hall is extremely popular at weekends for children's and adult birthday parties. Overall the financial year ended with a healthy surplus and I am glad to say that the café is trading tolerably well. The Trust final accounts will eventually be posted on the website when signed off.

As always, a very enjoyable part of the meeting is the presentation of prizes for the Front Garden Awards. Judging the gardens is a huge task and this year there were 22 judges ably organised, as usual, by Jill Farmer. I think everyone agrees that it is important to encourage residents to do what they can to make their front gardens attractive. It can make a huge difference to the appearance of the street.

### *The Prime Minister*

Many residents will remember Theresa May as one of our local Councillors between 1986 and 1994. We sent our congratulations to her shortly after her appointment as Prime Minister. Unfortunately the response did not arrive in time for the last newsletter but now here it is:-

"I was very grateful to have received a message of congratulations from the Wimbledon Park Residents' Association following my appointment as Prime Minister. I have very fond memories of my time as a councillor in the local area, where I started my political career. It was a very good grounding for my future roles in Westminster and I am pleased to hear that the area continues to prosper."

### *Final Roundup on the Greyhound Stadium*

As you all know from my last report, the planning application was sent back to Merton Council by Mayor Sadiq Khan for the Council to determine. This was very disappointing as we had hoped that, at the very least, Sadiq Khan would live up to at least one of his campaign pledges and ask for a greater percentage of affordable housing. At that time we were aware that Wandsworth Council were considering appealing to the Secretary of State and they did in fact do so. We also sent in an appeal through the offices of our MP Stephen Hammond. Subsequently we received from Stephen a copy of a letter from the Minister of State for Housing



and Planning saying that after due consideration he had decided that Merton Council should determine the application. This last effort exhausted the practical options available to us to obtain a better result for the Residents of Wimbledon Park.

#### ***Wimbledon Park Masterplan***

So far, there has been no response from the Council on the consultation carried out in August. When there is some news we will post it on the website. A joint response was submitted by Stephen Hammond and Justine Greening (MP for Putney). It is comprehensive and, I am sure, represents the views of many local residents and park users. If you want to read it in full you can find it at the following web address:-

<https://www.stephenhammond.net/news/wimbledon-park-consultation-response>

#### ***Crossrail 2***

In Stephen's report on page 6 he covers the updated position on Crossrail 2. It seems likely that it will be a while before residents hear any further.

#### ***Planning applications***

A number of local planning applications have been concerning residents, especially those who live in the area close to the Wandsworth border near the Haslemere Industrial Estate. There are a total of five developments – some in Wandsworth – which potentially could cause major traffic and pollution problems if they all get permission and decide to build at the same time. Considerable efforts have been made to alert both Councils to the problems for local residents. This has been highlighted in the article by the Wandle Valley Forum on page 12. (see map on page 14).

More recently there has been an application from the owners of the 'Glass House' towards the bottom of Arthur Road on the left hand side, to add another floor on the building for commercial use. This already very prominent building overlooks, to the rear, the houses and gardens of two residential roads. Over the last two years most, if not all, the commercial space in the building on the first and second floor has been converted to residential on the basis of permitted development. It seems rather odd that the owners should now be applying for permission to build more commercial space having just got rid of two floors. Overall this has major implications for the residents in adjoining properties. This proposal seems entirely inappropriate for this location and hopefully will be rejected.

#### ***Wimbledon Society – free membership offer for one year***

On page 16 there is an offer from the Wimbledon Society for one year's free membership. Having been Chairman at one time and currently still a Trustee of the Society I am pleased that the Society is taking this initiative to broaden its membership. Despite the Society having been in existence for so many years, it never ceases to surprise how many Wimbledon residents are unaware of its existence. I hope that lots of residents will take up this offer and become familiar with what their local amenity society, which is entirely run by volunteers, does on their behalf.

Have a happy Christmas and New Year

## Update from Stephen Hammond MP

Firstly, I would like to take this opportunity to wish you and your family a very Merry Christmas.

Crossrail 2 remains one of the biggest local issues we are facing here in Wimbledon Park. The consultation on the latest route option was supposed to have started by now, but there was very little information as to why it had not. Therefore, a few weeks ago, I asked a Prime Minister's question on the topic, and later spoke to the Managing Director of Crossrail 2 who has confirmed that there will be no consultation or revised route options published until after the business case is settled, and so it will be postponed until at least Q2 2017.

This confirms what the Prime Minister said to me in the House of Commons:



*Stephen Hammond MP - As a former Wimbledonian, my right hon. Friend will understand the significance of transport for south-west London and in particular for Wimbledon. Can she assure me that the Government still support Crossrail 2, and will she ask the Secretary of State for Transport to set out the timetable for the delayed consultation?*

*The Prime Minister - I can absolutely give the commitment that we continue to support Crossrail 2. We are waiting to see a robust business case and a proper funding proposal for Crossrail 2. My right hon. Friend the Transport Secretary will in due course set out the timetable for that, but as a former Wimbledonian I can assure my hon. Friend that we are well aware of his interest in the Wimbledon to Waterloo aspects of the project, and that the needs of the local area are being taken into account.*

To me it seems, that following the National Infrastructure Commission's recommendation that Crossrail 2 could be delivered at a lower cost, the Government wants to fully take stock of this before the next stage of planning for the project. I expect the Government will be asking Transport for London for a full business case for their Crossrail 2 plans, to ensure that they deliver value for money to the taxpayer and real improvements to London's transport network that only a new line can provide.

It may be that Crossrail 2 serves fewer stations to reduce costs, and I will of course fight to ensure that any cost reductions do not justify destroying our Town Centre. To do this, I am seeking a meeting with Lord Ahmad, the Transport Minister responsible for Crossrail 2 and former Wimbledon Park Councillor, to find out what impact the business case has on Wimbledon, Wimbledon Park, Raynes Park and Motpur Park.

I know this is a very important issue for many residents, and alongside your local Councillors I will of course continue to keep you updated with any further news. We have also set up a dedicated Crossrail 2 website where you can sign up for updates at [www.crossrail2wimbledon.london](http://www.crossrail2wimbledon.london)

## Adam's Plumbing

Southfields, SW18

*With 25 year's experience, working in the Southfields area, I undertake all household plumbing and heating jobs.*

*For a prompt call out, or to arrange a free estimate, please contact me on:*

07956 324460  
adams\_plumbing@hotmail.co.uk

## ABK

### A.B.K. ACCOUNTANCY & TAX SERVICES

**For All Your Accountancy, Taxation and Business needs**

- Accounts
- Taxation
- Self-employed
- VAT Returns
- Lettings Accounts
- Wages -PAYE
- Partnership Accounts
- Tax advice

- Book Keeping Services
- Management Accounts
- Self- Assessment Tax Returns
- Limited Company Accounts
- Company Formation
- Sub-contractors C.I.S.
- Tax Refunds

**All services at competitive rates**

**59 Ashen Grove, Wimbledon Park, London SW19 8BL**

**Tel: 020 8947 9931 – Fax: 020 8879 3412 – Mob: 07989770847**

**Email: abk.accountancy@btinternet.com Website – [www.abk-accountancy.com](http://www.abk-accountancy.com)**

## **TRANSPARENCY**

**Street level views of Wimbledon Park from the west have been greatly improved since the replacement of the old solid fence by a fairly transparent metal railing fence alongside Wimbledon Park Road and Church Road.**

**It is a pleasure for visitors and tennis enthusiasts during Wimbledon fortnight as well as for all year round resident walkers, joggers, cyclists and even for those driving their motor vehicles through the area at a moderate speed to enjoy a holistic view of the Park, golf courses and landscaping together, also catching glimpses of the Lake.**

**The same cannot be said for the high level views from the south alongside the best part of Home Park Road, where the existing old post concrete fence segregates the Park from the public realm.**



**Perhaps it may be possible to persuade the Wimbledon Park Golf Club to undertake the replacement of the old fence in a similar manner to that on the west boundary, thus achieving the necessary transparency to regain the high level**

**views of the Park and the Lake as intended in its original design.**



**If this action was implemented, it would go a long way in meeting one of the aims of Merton Masterplan Proposals under consultation for the enhancement of the Park and the visibility of the Lake for all to enjoy.**

**Mario L Avendano, RIBA**



# Burlington

Burlington Residential Estate Agents



*Established since 1994*

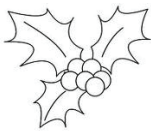


**Wishing you a Merry Christmas and a  
Happy New Year for 2017**

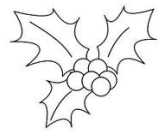
***If one of your New Year's resolutions is to sell  
or rent out your property:  
Contact us for a free lettings or sales valuation***

**Tel: 020 8944 9898**

Burlington Residential is your established, local  
independent estate agent located prominently opposite  
Wimbledon Park station.



*Call us today.*



**We advertise on all of the major portals**



[www.burlingtonresidential.co.uk](http://www.burlingtonresidential.co.uk)

141 Arthur Road, Wimbledon Park, SW19 8AB

## DURNSFORD REC FRUIT HEDGE

The annual pruning of the Fruit Hedge in the park took place on 4<sup>th</sup> November with the assistance of the Merton Tree Wardens and volunteers. Many thanks to you all. As well as generally pruning we also removed a number of Elders which have been taking space and light away from the fruit trees and bushes.

The crop this year was rather disappointing but this appears to have been the theme with fruit in general this year, with many people reporting that apple, pear and plums did not produce a great yield. We hope that following



L to R, Jane Plant, Peter Fischer, Martin Brown, David Welch, Jonathan Matthews, Jane Swann- Wright

the pruning and some good weather that the fruit hedge will be more productive next year. Look out for the sign in the park which lists the fruit in the hedge and when it should be ripe for picking.

Pamela Healy

# CORIANDER

Traditional Stained Glass and Lead Lights

WE HAVE MOVED  
TO OUR NEW SHOP AT:

**27, KINGSTON  
ROAD,  
SW19 1JX**

**020 8947 7635**

**[www.corianderstainedglass.co.uk](http://www.corianderstainedglass.co.uk)**



## Wandle Valley Forum



Wandle Valley Forum provides support and an independent voice for over 100 community groups and voluntary organisations and for everyone who shares a passion for the Wandle. We were set up over 10 years ago and our campaigning was instrumental in establishing the Wandle Valley Regional Park which runs from Croydon

to the Wandle Delta in Wandsworth. The Wandle Valley inspires people and organisations to care for and enjoy it. This includes different voluntary organisations that champion the Regional Park, promote its history and look after the health of the river and its catchment. Wandle Valley Forum makes a unique contribution to this network of Wandle organisations. Our role is fourfold. We support community groups and others inspired by the Wandle. We provide the glue which brings people and organisations together. We manage a communications network on Wandle issues, including a website, meetings and a Wandle Bulletin. And, importantly, we use our independent voice to amplify that of local groups and speak out for the Wandle Valley's future.

Two recent examples of our work include the celebration of Wandle Fortnight and campaigning to close the gap in the Wandle Trail at Earlsfield. The Wandle was celebrated through more than 50 community-led events and activities last September. We supported these and ran a microgrants programme which distributed £1000 to nine organisations, including the Ramblers, Ethnic Minority Centre, Friends in St Helier, Wendelsworth Residents Association and Wild in the City. We are looking forward to next year's Wandle Fortnight and plan to expand the grants programme. It's never too early to plan what might be done along the river in Wimbledon and Earlsfield and let us know your thoughts.

We have also taken a close interest in the remarkable amount of development activity next to the Wandle in Earlsfield. At the last count there were five live development proposals along with plans for a Crossrail 2 Depot at Weir Road. We have worked with WPRA and residents in Wandsworth along with the local MP, councillors and other local groups to encourage Merton and Wandsworth Councils to take a strategic approach. We have also met twice with Crossrail 2. With the right support, the area could benefit from quality development that also provides new access to the river, a bridge, connections to the Capital Ring and local open spaces and a completed Wandle Trail. The decisions over the next few months will be crucial. All we do know is that, without this intervention, it





## DANIEL SMITH

CARPENTER AND SPECIALIST JOINER

Beautiful, bespoke carpentry including:

- Alcove Bookcases • Cupboards
- Wardrobes • Bookshelves
- Sash Windows • Doors
- Home Offices • Radiator Covers

Tel: 020 8874 5205 Mobile: 07950 251026,

E-mail: daniel-smith1@hotmail.co.uk

48 Lavenham Road Southfields London SW18 5HE



\* Gifts \*  
\* Cards \*  
\* Jewellery \*  
\* Toys \*

**Solve all your present problems  
at Southfields' Aladdin's Cave**

Monday - Saturday 9.30 - 6.00

Sunday 10.30 - 4.30

41 Replingham Road, Southfields, SW18 5LT

[www.chalkgifts.co.uk](http://www.chalkgifts.co.uk) 020 8870 6125

definitely won't happen.

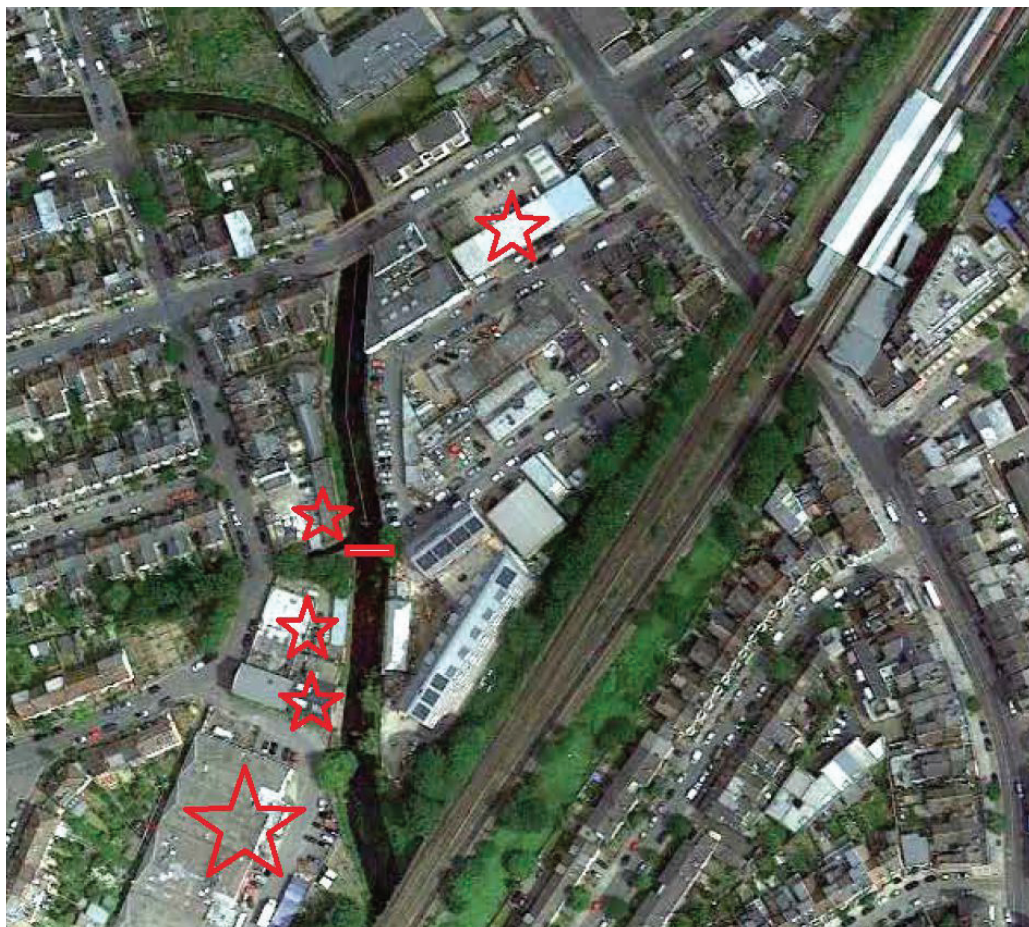
These and other priorities are set out in the Wandle Valley Forum Charter which was prepared by our supporters and launched last Easter. Copies are available from our website.

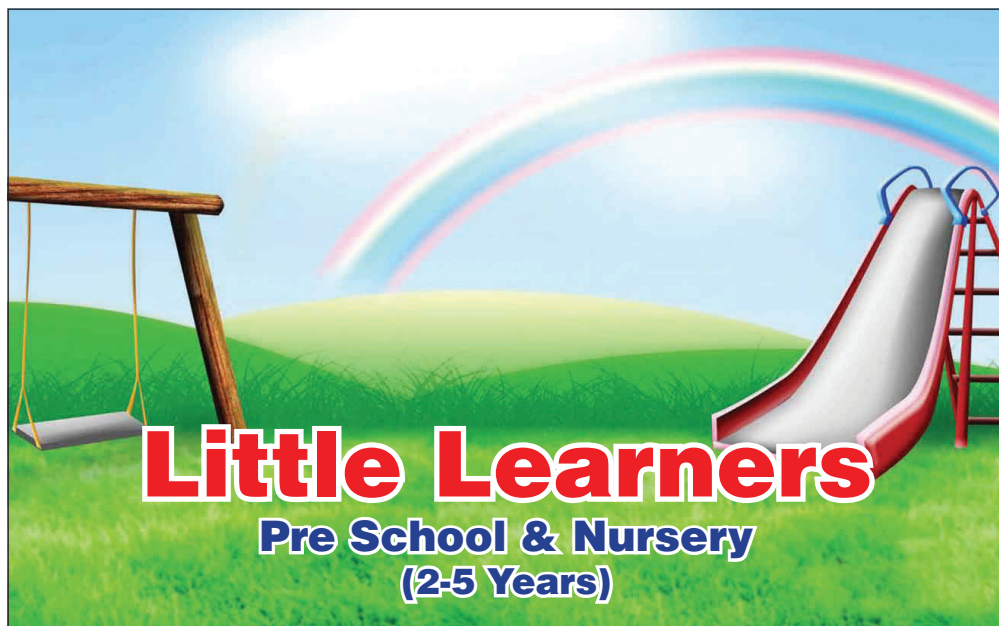
Wimbledon Park Residents' Association is already a stout supporter of Wandle Valley Forum. If you want to know more, then check out our website at [www.wandlevalleyforum.org.uk](http://www.wandlevalleyforum.org.uk) where you can also sign up to receive our Bulletin. You will also find us on Twitter (@wandleforum) and can contact us on email at [wandlevalleyforum@gmail.co.uk](mailto:wandlevalleyforum@gmail.co.uk). We welcome your support.

**Tony Burton**

**Chair**

(Stars below represent developments and red bar a proposed footbridge)





# Little Learners

**Pre School & Nursery  
(2-5 Years)**

- Wrap around care & pick ups from some schools
- Nursery summer playschemes
- Registered Outstanding by Ofsted

## **Two locations...**

### **IN THE PARK -**

Durnsford Pavilion  
Durnsford Recreation Ground Wellington Road  
Wimbledon Park SW19  
Tel: 0774 9899976

### **IN THE GARDENS -**

Coronation Gardens  
95 Pirbright Rd  
Southfields SW18 5NB  
Tel: 07749 377 253

Please call for information on days, session times and pick up locations

**[www.littlelearnersinthepark.co.uk](http://www.littlelearnersinthepark.co.uk)**



## **A Special Invitation to Residents of Wimbledon Park**

The Wimbledon Society would like to invite you to take part in a 12 month free trial membership of the Society.

We are the local Amenity Society for Wimbledon and were established in 1903, with a current membership of around 1,000.

We have run the Museum of Local History on the Ridgway, Wimbledon Village since 1916. This is an accredited and award winning Museum and run entirely by Volunteers.

Opening hours are normally 2.30pm to 5pm on Saturday and Sunday afternoons. Admission is free of charge.

As part of your free trial we would email or deliver our quarterly newsletter to you, which is full of interesting articles about Wimbledon - both current and historic. We have pieces about Planning applications in the Borough, especially Crossrail 2 and the implications this will have on the residents and Merton Council's plans for a new Town Centre. There are also nature notes, historical articles and much more of interest, and a list of a wide range of forthcoming activities in and around Wimbledon. Previous newsletters, which will give you an idea of the wide ranging and interesting articles, can be seen in the archive section of our website below.

You would also be entitled to attend our lectures and guided walks, and to go on excursions to London or nearby places of interest at a small cost.

At the end of the free trial you will have the option to join, which costs £15pa for single membership and £20pa for a family/couple.

To take advantage of this offer, commencing on 1<sup>st</sup> January 2017, please apply with your name and address to:

[membership@wimbledonsociety.org.uk](mailto:membership@wimbledonsociety.org.uk)

or telephone Jennifer Newman on 0208 715 1999

For more information about the Wimbledon Society, please go to:

<http://www.wimbledonsociety.org.uk>

<http://wimbeldonmuseum.org.uk>



# IMI Property Solutions

An Independent Property Agent  
based in Wimbledon Park

Professional and Personal  
Service

See all our properties on...

**Zoopla**

 PrimeLocation

THE  TIMES

**THE Sun**

THE SUNDAY TIMES

The  **INDEPENDENT**

The Telegraph

**Daily Mail**

msn 

London  
**Evening  
Standard**

**Homes &  
Property**

Call me to discuss your requirements

**Contact: Iain Simpson**

**Tel: 020 8947 8692 Mob: 07836 361 782**

**Email: [ics@imipropertyolutions.com](mailto:ics@imipropertyolutions.com)**



## **DO WE NEED BASEMENT DEVELOPMENTS?**

The chronic shortage of residential property availability in London, and Merton is no exception, is reflected in the continuous and relentless increase in land and property prices, making it generally cheaper to extend existing dwellings upwards or downwards than to move house.

Extension by merit of loft conversions for this purpose has been extremely popular over the last 30 years to the extreme that in certain areas in Wimbledon Park, the Grid comes to mind, a very high proportion of the properties have been extended up, providing improved facilities for their occupiers while generally increasing the value of the properties.

As the street appearance of the properties is hardly changed, it is not so evident to notice that this process of increased property values has generated some form of gentrification of the area, where these now larger family houses are acquired by higher income family groups quite different from the mixed ownership of the area when this was developed last century.

As property extending up is becoming limited, then the option of extending down into a basement development is slowly beginning to take place, although not with the intensity already seen in other inner London boroughs such as Westminster or Kensington and Chelsea, where Local Authorities have had to promptly tighten the regulations controlling this type of development.

Unlike the loft conversion where the expenditure is low in comparison with the immediate raise of the property value at completion, basement extensions are expensive, technically complex and carry far more risks involving neighbouring properties. They are less likely to raise the property value and justify the investment unless intended for own use for a long period by the occupants.

The construction period for a basement extension is also far more complicated to manage from various points of view all needing special attention, starting with the length of construction and disruption to neighbours, land stability during excavation and demolition works, noise, vibration, dust, hours of work and potential impact to drainage and biodiversity.

The intended use of the basement accommodation more likely to be for ancillary uses as games room, TV room, studies, rather than prime habitable room that requires higher daylight and ventilation levels. They generally do not attract much sympathy or support from neighbours bearing the brunt of the disturbance during the construction period.

This opposition becomes particularly apparent when the proposed basement extension goes through the scrutiny of a Planning Application, although it should be noted that not all basement extension will go through this process as some proposals may be considered as a Permitted Development.

Merton Council has published a very comprehensive document on the subject, "Basement Development" - Supplementary Planning Document (Draft) that can be read on-line from their website providing ample information on planning guidance and regulations that apply in reference to basement development in the borough. Compliance with Building Regulations and Party Wall Agreements for proposals for basement developments provide another instance of security if you are either promoting or being affected by such development.

Whatever your position would be in such a situation, it is worth remembering that, in this constant need to achieve an efficient use of the borough's limited land availability, it is best to allow controlled and planned new development wherever possible rather than promoting a blanket opposition to basement developments.

The next move? Will it be a surge in back garden developments? Not in my garden I hear you saying!

**Mario L Avendano, RIBA**



## **HM ELECTRICAL**

**Local Electrician - all domestic electrical work undertaken from additional sockets/lights to full rewires. Includes testing & certification. Please call or email for quote.**

**Tel 07866 433378**

**Email [hector@hmelectrical.org.uk](mailto:hector@hmelectrical.org.uk)**

**51 Ashen Grove, Wimbledon Park, SW19 8BL**

## McGlennons Solicitors

Is your New Year's resolution finally to get around to making your Will? Are you thinking of making a Lasting Power of Attorney to appoint a trusted person to help you manage your affairs if the need should arise? Maybe you would like to discuss a family related matter. Do you have property related matters to discuss?

For any of these matters, please call into our newly refurbished office in the old butcher's shop at 157 Arthur Road, SW19, where you will find us welcoming and accessible. An initial 20 minute consultation is free of charge.

Our receptionists, Tessa and Jennie, will be pleased to introduce you to one of our solicitors:

**William Essex** (the Principal) – can assist with wills, probate powers of attorney and lease extensions and other property matters

**Zankhna Vyas** – can assist with residential property matters such as conveyancing and re-mortgages

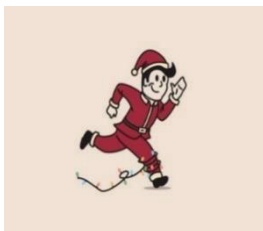
**Gwyn Jones** - has great experience with any of the above and also in matters relating to commercial property, landlord and tenant disputes, employment and general contentious matters.

**Barbara Morris** – can assist you with pre-nuptial agreements and all other family matters.

For all enquiries, please ask for:

William Essex      157 Arthur Road, Wimbledon Park, London, SW19 8AD

McGlennons      Phone: 020-8946 6015 / Email: mail@mcglennons.co.uk



*The staff at **McGlennons** would like to wish you a very Merry Christmas and a Happy New Year and every success for 2017*



## **Stamp Duty Land Tax charge – An unexpected spanner in the works!**

Property owners, who have transferred property to adult children with the intention of reducing their estate to save in inheritance tax, are finding an *unexpected spanner in the works*. The adult child, who is now looking to buy their own first property, is faced with the additional *3% Stamp Duty Land Tax* for owners of more than one property which was introduced in April 2016.

The solution would seem to be for the adult child to give the share they own in the family property to their siblings whilst they complete their own purchase, trusting that their siblings will give back their share after the purchase completes!! Of course, careful consideration should be given before taking such action. Capital Gains Tax implications will also play a part. William Essex – McGlennons Solicitors

### ***McGLENNONS Solicitors***

*Providing legal services in Wimbledon Park since 1995. We specialise in:*

Wills & Lasting Powers of Attorney

Probate & Estate Administration

Residential & Commercial Conveyancing

Leasehold Extensions & Freehold Enfranchisement

Landlord & Tenant

Dispute Resolution & Family Law

*No charge - 20 minute initial consultation*



**Conveyancing  
Quality**



**William Essex Principal | Gwyn Jones | Zankhna Vyas | Barbara Morris**  
**157 Arthur Road London SW19 8AD Tel: 020-8946 6015 [www.mcglenons.co.uk](http://www.mcglenons.co.uk)**

Allegation	Method	Address	Date and Time from	Date and time to
Arson	Suspects have gained entry into enclosed sports ground and thrown fireworks into an open back door of building causing the building to catch fire.	WIMBLEDON PARK	28/10/2016 08:00	28/10/2016 08:30
Burglary in a Dwelling	Male has had phone stolen out of bag in shared house.	LEOPOLD ROAD	24/10/2016 04:30	24/10/2016 04:45
Criminal Damage To a Dwelling	Victim called police because his friend wouldn't leave the premises. His friend has problem with drink and broke glass panel. He was hoping Police could assist with his alcoholism as he didn't wish to substantiate allegations.	MOUNT ROAD	15/10/2016 22:40	
Criminal Damage To M/V	by suspect unknown smashing car window by means unknown.	HOME PARK ROAD	11/10/2016 19:00	11/10/2016 20:00
Criminal Damage To M/V	Criminal damage to Victim's vehicle between the 2nd and 15th of October 2016 by an unknown suspect	WATERSIDE WAY	02/10/2016 18:00	15/10/2016 15:30
Criminal Damage To Other Bldg	By unknown suspect discharging a fire extinguisher into a shop causing damage to stock.	HAYDONS ROAD	30/10/2016 21:50	
Criminal Damage To Other Bldg	By suspect spraying possible fire extinguisher into premises.	DURNSFORD ROAD	30/10/2016 21:30	30/10/2016 21:30
Other Criminal Damage	Two unknown males opened shop door and discharged fire extinguishers	HAYDONS ROAD	30/10/2016 21:55	30/10/2016 21:56
Other Theft	Victim had a house party, during the party an unknown suspect has gone into her room and damaged a laptop and stolen another	ARTHUR ROAD	30/09/2016 22:00	01/10/2016 03:00



Services include:

- Domestic
- Commercial
- Telephones
- Rewires
- Testing

*Also available for  
evening appointments.*

**E O'Driscoll**  
*Approved Electrician*

Email-eddieodriscoll18@hotmail.com

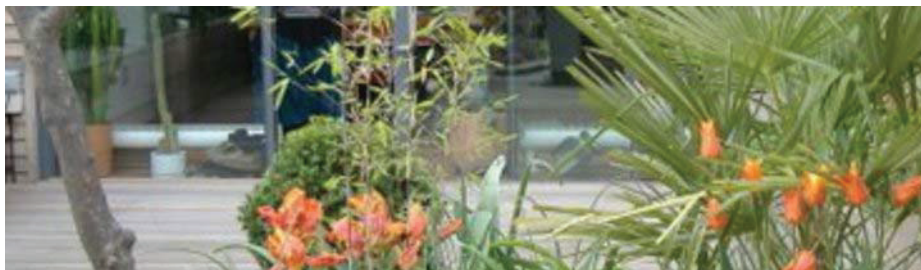
Mobile-0797 080 7249

Landline:020 8785 4610

Home and Garden

Modern designs for historic settings

**Seasons Greetings to all  
Wimbledon Park residents**



**Contact us in 2017 for all your architectural needs**

**Tectonics Environmental Design**

38 Haydon Park Road, SW19 8JY. 0208 540 6543/0777 218 1876

[waringtame@blueyonder.co.uk](mailto:waringtame@blueyonder.co.uk)/[www.tectoniced.co.uk](http://www.tectoniced.co.uk)

Other Theft	victim left his bicycle locked out side his house for a few hours. when he got back both wheels of his bicycle had been stolen	LEOPOLD ROAD	02/10/2016 23:30	03/10/2016 02:00
Other Theft	By suspects attending location on what is described as two high powder motor cycles. They pulled up near the kiosk and the passengers got off and stole three fire extinguishers from a rack on the forecourt	PLOUGH LANE	06/10/2016 22:45	
Other Theft	By an unknown person(s) taking the victims iPad mini from her bag whilst she was in the park.	WIMBLEDON PARK	12/10/2016 11:00	12/10/2016 15:00
Other Theft	Victims parcel stolen from the front garden of the property	ASHEN GROVE	25/10/2016 10:00	30/10/2016 00:01
Other Theft	an employee's ex girlfriend has text the employer to inform them the boyfriend has stolen items from work	WEIR ROAD	01/08/2016 00:01	31/10/2016 13:00
Other Theft	By unknown suspect (S) removing drill from the venue without consent of owner.	WIMBLEDON PARK ROAD	26/10/2016 00:01	28/10/2016 23:59
Other Theft Person	Victim has been pick pocketed by unknown suspect.	NORMANTON AVENUE	25/09/2016 06:00	25/09/2016 10:00
Theft From M/V	by suspect breaking into van and taking numerous tools	DURNSFORD AVENUE	30/09/2016 20:30	01/10/2016 13:45
Theft From M/V	Entry gained after damaging drivers car lock/ property taken from rear.	PLOUGH LANE	08/10/2016 12:00	
Theft From M/V	Victim left the van, 2 males were seen by victim 2 to get into the van and take items from inside the van. Victim went back to the van 15-20 minutes later, suspects had gone.	PLOUGH LANE	11/10/2016 13:45	11/10/2016 14:04
Theft From M/V	by two suspect's seen to cut a hole in the fence and then smash windows and enter vehicles	WEIR ROAD	12/10/2016 22:00	13/10/2016 03:00



# CREATIVE WORKSHOPS IN WIMBLEDON!



**Local evening and weekend  
workshops running throughout  
the year, book today  
through our website.**

*All abilities welcome*

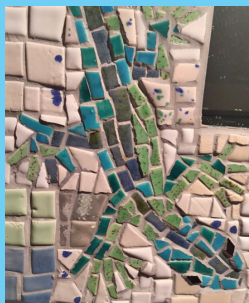
9 Weir Road, Wimbledon SW19 8UG  
020 8971 9172 [@Workshop305CIC](https://twitter.com/Workshop305CIC)  
[info@workshop305.com](mailto:info@workshop305.com)  
[www.workshop305.com](http://www.workshop305.com)



**WORKSHOP 305**  
Community Interest Company



**S** Social Enterprise UK  
Certified Member





Theft From M/V	By suspect gaining entry into vehicle and stealing cash and stealing wing mirror from vehicle	MOUNT ROAD	12/10/2016 22:00	13/10/2016 16:00
Theft From M/V	by person unknown taking victims phone from his passenger seat in his car where he left it unattended	PLOUGH LANE	15/10/2016 09:00	15/10/2016 10:00
Theft From M/V	Theft from motor vehicle overnight, no force used, car was locked. Items taken	STUART ROAD	18/10/2016 16:30	19/10/2016 09:00
Theft From M/V	By entering victims vehicle and removing property from same.	HOME PARK ROAD	14/09/2016 11:30	14/09/2016 12:30
Theft From M/V	The victim's car window was smashed and the disabled badge was taken by an unknown suspect.	HAYDON PARK ROAD	22/10/2016 19:00	23/10/2016 08:30
Theft From M/V	Vehicle has had drivers side window smashed.	PLOUGH LANE	22/10/2016 16:30	23/10/2016 08:57
Theft From M/V	Victim woke up in the morning and discovered her driver side window had been smashed and her blue disabled badge had been stolen and therefore called police.	HAVELOCK ROAD	22/10/2016 17:00	23/10/2016 09:50
Theft From M/V	Unknown persons have damaged a wind-screen and stolen a disabled badge.	GAP ROAD	22/10/2016 23:00	23/10/2016 10:30
Theft From M/V	by suspects stealing rear number plate from car	DURNSFORD ROAD	25/10/2016 22:25	25/10/2016 22:25
Theft From M/V	On 25/10/2016 at 11:50hrs parked his van outside the wicks on plough lane when victims 1/2 returned they found the drivers door damaged and inside of the of van tools were missing	PLOUGH LANE	26/10/2016 11:50	26/10/2016 12:00
Theft From M/V	Front and rear number plates from vehicle stolen by unknown suspect.	LUCIEN RD	26/10/2016 19:00	27/10/2016 05:00
Theft From M/V	by unknown suspect taking the disabled badge from the vehicle without consent	KOHAT ROAD	30/10/2016 11:00	

**bespoke** financial intelligence



## **Welcome to Z group**

### **Accountancy   ·   Legal   ·   Architecture**

Welcome to Z group, one of the UK's first Alternative Business Structures (ABS). Comprised of Accountants, Solicitors and Architects, we are regulated by the ICAEW, SRA and RIBA. Offering a comprehensive range of professional services to individuals and businesses, we are a truly integrated 'one-stop shop'.

#### **Individual Solutions**

We build lasting relationships with generations of families, focusing on wealth protection and Inheritance Tax.

#### **Business Solutions**

To our business partners we offer a bespoke suite of legal, accounting and HR solutions across London. Delivering periodic management accounts and clear reporting channels, we keep you abreast of your performance, driving economy and efficiency at all levels of your business.

#### **Property Solutions**

We offer a unique integrated solution to developers and investors, taking you from purchase to building handover or sale. Why speak to multiple advisers when our intelligent service can provide the efficiency of time and money required for such ventures?

**Z | group** Park House 162-164 Arthur Road London SW19 8AQ  
**t:** 020 8944 1180    **e:** info@zgrp.co.uk    **w:** www.zgrp.co.uk



## **Why should I support the Residents' Association?**

There has been some sort of Residents' Association in Wimbledon Park since 1906. The Association provides an important forum for discussing important local issues and a platform for action. Since its inception, the Residents' Association has helped hundreds, probably thousands of local residents, irrespective of religion, race or creed who have turned to the committee for guidance and support.

We regularly check local planning applications and have been very successful in opposing unsuitable developments. We promote planting and improvements in local parks and green areas. We work with the local police to help you to fight crime in your street and keep you informed by publishing the crime statistics in our newsletter which is produced three times a year and is delivered by volunteer street representatives to over three thousand homes in the Ward.

We have led some major initiatives such as the redevelopment of Wimbledon Park Hall – so that once again we have our own community centre. We have put on fairs and shows and supported numerous local campaigns, individuals and families faced with tragedy. The Residents' Association has given the Wimbledon Park Community a solid and respected voice when dealing with Merton Council. An individual can achieve only so much, but as a team we can and do achieve so much more.

For residents who are new to the area - or possibly those who have forgotten what we have achieved, you will find a brief summary list on pages 30 and 32 covering the last 10 years.

Our income is derived from subscriptions and advertising in the newsletter. We need your support to ensure the continuation of our activities, ideally for three years. Twelve pounds for a 3 year period will help us pay for printing and stationery to publish this newsletter, computer and IT software to run the website, materials and equipment to organise events and keep the flowerboxes blooming in Arthur Road.

Please take a moment to fill in the very brief form on the opposite page. We regret that, unless an email address is supplied, we are unable to acknowledge receipt.

If you are already a member but are not sure of your current status, email to [wpsecretary@blueyonder.co.uk](mailto:wpsecretary@blueyonder.co.uk) and we will check for you.

Thanks in advance for your support. It is hugely appreciated.

DeNica Fairman, Membership Secretary

## To Join the Wimbledon Park Residents' Association

Please complete this form and return it to us with your payment:

**Name** \_\_\_\_\_

**Address** \_\_\_\_\_

\_\_\_\_\_

\_\_\_\_\_ **Post Code** \_\_\_\_\_

**Email\*\*\*** \_\_\_\_\_

### SUBSCRIPTION RATES

1 Year.....£5.00

3 Years.....£12.00

Donation.....£ \_\_\_\_\_

Payment Options:

**By cheque - please make cheques payable to:**

**Wimbledon Park Residents' Association**

Post to: WPRA, 3 Strathmore Rd, SW19 8DB

By Cash

You are welcome to drop your subscription through the door of the Membership Secretary, DeNica Fairman at 3 Strathmore Rd, or of our Chairman, Iain Simpson at 56 Home Park Rd.

**Email\*\*\* If you would like to be included on an e-mail list for crime alerts, WPRA updates and information on other important local issues, Please tick here**

☐

**Please date...../...../.....**

## **10 years of activity by the WPRA – Making a difference**

- 2006** Co-ordinated fundraising for the Ravindran family (after fire in Arthur Road). Approximately £28,000 raised by the community.  
Public meetings (three) to discuss the proposals for Wimbledon Park Hall
- 2007** Successful campaign to stop the Orange Mast erection in Arthur Road (Led by DeNica Fairman)
- 2008** Centenary Fair in Wimbledon Park – fund raising for the new Hall
- 2009** Edwardian Fair - first two Fairs organised by DeNica Fairman
- 2010** Edwardian Fair (total funds raised (3 fairs) after expenses £19,000)
- 2011** WPRA submit complaint against London Borough of Merton to the Local Government Ombudsman for delays in progressing the new Hall and café (since 2004) (David Watkins)
- 2012** Diamond Jubilee wild flower and fruit hedge planting  
Diamond Jubilee roses planted in Kenilworth Green  
Co-founder of Friends of Wimbledon Park  
Building begins on Wimbledon Park Hall  
Vineyard Hill Road Surgery funding problem emerges  
Campaign starts to oppose Wimbledon Park car park extension
- 2013** Response to Greyhound Stadium (Sites and Policies consultation)  
Wimbledon Park Hall nearing completion (overseen by David Watkins)  
Successful campaign to stop car park extension in Wimbledon Park.  
Kenilworth Green declared a protected open space after lobbying Sites and Policies Committee
- 2014** Took possession of Wimbledon Park Hall in February  
Official opening of Wimbledon Park Hall by Lord Ahmad of Wimbledon  
Sites and Policies - Greyhound Stadium proposals. Addressed the Inspectors' Hearing;  
Survey of residents over 2 proposals for redevelopment: Galliard/AFC and Paschal Taggart New Greyhound Stadium  
NHS England announces closure of Vineyard Hill Road Surgery  
Public meeting of residents with Stephen Hammond and NHS England  
Greyhound planning application submitted in December 2014  
Submitted objection on behalf of residents
- 2015** Campaign to keep Vineyard Hill Road Surgery open successful due to

Continued on page 32



# The Siegeris School of Dance

Wimbledon, Wimbledon Park, South Wimbledon, Tooting,  
Raynes Park & Mitcham

Email to  
register your  
**FREE** trial

**Dance classes from Pre School-Adults / Boys & Girls  
Monday-Saturday**

\* Royal Academy of Dance (RAD) Ballet

\* ISTD Modern & Tap

\* Ballet, Jazz, Modern & Tap, Street Dance, Musical Theatre/Drama

**07730536499 / [info@siegerisdance.com](mailto:info@siegerisdance.com) / [siegerisdance.com](http://siegerisdance.com)**



The Ballet Boutique is a local and online dance shop to cater for all your dance needs whether you're performing in the spotlight or practicing in the studio elegant styles to perfect your look.

***All leading brands and local dance school uniforms stocked***

146 Merton Road, Wimbledon, SW19 1EH

[info@ballet-boutique.co.uk](mailto:info@ballet-boutique.co.uk) / 020 8540 9000 / [ballet-boutique.co.uk](http://ballet-boutique.co.uk)



concerted effort by WPRA, Stephen Hammond MP, local  
Councillors and Paresh Modasia

Submitted objections to amended plans for Greyhound Stadium

Planning application considered and approved for Galliard/AFC on  
10/12/15 by Merton Council

2016 Greyhound application submitted to the London Mayor by Merton Council.

Called in by Boris Johnson

We responded to subsequent consultation by Sadiq Khan (new Mayor)

Khan returns application to Merton Council

We (and Wandsworth Council) appeal to the Secretary of State

Appeal refused

We responded to Wimbledon Park Masterplan

Attended hearing in Kingston and submitted written response to Boundaries  
Commission proposals

Crossrail 2 consultation (ongoing)

+++++

## Boundary Commission Consultation

The effect of the current proposals by the Boundary Commission (BC), if carried through, would be to end up with Wimbledon Village and Common and Wimbledon Park in the Putney Constituency. This, in the view of many residents, is undesirable and when viewed against the main criteria set out by the BC would be totally inappropriate.

The following is an extract from the WPRA submission which has been sent in to the Boundaries Commission. This followed my personal representation at the public hearing at the Guildhall in Kingston on the 28th October. The submission was an amalgam of my own thoughts plus those circulated by Stephen Hammond and the very cogent alternative proposal put forward by the Wimbledon Society (author Tony Michael).

**The maps relating to the proposals would not be very readable in this page size so I recommend you Google the 'Boundary Commission Consultation' and enter your postcode when invited. The maps come up immediately.**

Also given the length of the submission and the limitation on pages in this newsletter I have left out a lot of the pleading and concentrated on providing the essence of the alternative proposals and their rationale. The entire submission will be available on our website. The extract is as follows and concludes on page 38.

**“ The overall effect of the current proposals is to end up with the London Borough of Merton having to deal with five representative MPs. This is both likely to be unmanageable from a practical point of view and would be considered by most of the residents affected as totally unsatisfactory.**

**We appreciate the difficult task that faces the BC, particularly when it does not appreciate the relationships that are endemic to the areas they are considering.**

**We would like to suggest the following alternative proposals which we feel would protect the integrity of Wimbledon as it stands and at the same time achieve what the BC is looking for. It is worth mentioning that back in 1965 when the London Borough of Merton was formed it was effectively joining the interests of Mitcham and Wimbledon. It is important to remember that Mitcham has a strong history and identity of its own which should be preserved.**

**London currently has 73 parliamentary seats/constituencies, and the Boundary Commission (BC) proposals envisage this figure being lowered to 68.**

**The optimum electorate has been defined as some 74,769, plus or minus 5%.**

**The normal ‘target’ for each seat therefore needs to be between 71,031 and 78,507.**

**The current electorate in the Wimbledon constituency is significantly lower than that, at some 63,505. This is presumably why amended boundaries are being suggested.**

**The BC proposals are guided by various criteria in the Act, eg:**

**If “any local ties would be broken by changed constituency” boundaries**

**“special geographical considerations, in particular the size, shape and accessibility of a constituency”**

**having “regard to local government boundaries” including London Boroughs.**

**Reference to these local government boundaries includes the boundaries of the current Wards within each Borough.**

**As the name Wimbledon is a “world name”, it would be reasonable to expect that all the parts of the locality that were seen to be “part of Wimbledon” would be within a single entity or constituency. However, the current proposals sever the main town centre from many areas that are demonstrably “Wimbledon”, such as the Common, Wimbledon Village, the All England Club, Wimbledon Park, West Wimbledon.**

**Wimbledon town centre is instead linked up to parts of Mitcham, which is itself a centre of real individual significance, but is not directly related to Wimbledon.**

**Mitcham has its own very special historical and social identity, which should be respected.**

**The shape of the proposed constituency has no recognisable geographic rationale, does not respect Borough boundaries, and clearly breaks local ties.**

**The current BC proposals are therefore considered to be deeply flawed.**

Continued on Page 36

## **Autumn and winter is always a busy time in a Community Pharmacy**

During the autumn and the run up to the Christmas season sees us managing a full workload, with flu vaccinations and increased prescription volume and, in the midst of this, we have now had confirmation of the funding decrease to Pharmacy from NHS England which will put us, and many pharmacies like us, under a huge amount of financial pressure.

You will almost certainly be aware that England's pharmacies are facing damaging cuts which could force some community pharmacies to close. Many other pharmacies will inevitably choose to reduce their staff and services to try and offset and mitigate the losses. This will inevitably lead to further pressure on GP practices, A&E departments and also some Social Services from local Authorities.

It seems the proposals were made without taking into account the recent Price Waterhouse Cooper report into the value of pharmacies to the local community. Many people depend on us for their medical needs and more especially in the winter when certain patients are less able to get out and about.

Services such as our prescription collection and free delivery service can be vital for many patients and customers. Most pharmacies also run a minor ailments service which enables patients to receive free medication for certain conditions without having to wait for a doctor's appointment.

These budget cuts could be catastrophic for many pharmacies which are already struggling, and any closures would significantly increase the pressure on our already over-stretched hospitals and GP surgeries.

We believe NHS England needs an urgent rethink on this policy, and to reassure us that they are going to support, not cut, local community pharmacy services.

We will continue to fight against these cuts and if it's something you also feel strongly about, you can support your local pharmacy by visiting and registering your interest at: [www.supportyourlocalpharmacy.org](http://www.supportyourlocalpharmacy.org).

We work closely with, and will continue to do so with your help, all the local GP surgeries. We believe we provide a valuable service to all the residents of Wimbledon Park and your continued custom is a vital and necessary part of our future in this community.

**James – Pharmacist at D Parry**



# WIMBLEDON PARK TRAVEL CLINIC

## Our services

### Prevention & wellness



We offer the specialist medical travel advice and up to date travel news to keep you and your family as healthy and safe as possible.

### Diseases & conditions



We provide travel vaccines, and medication without a prescription. No matter where your destination might be, we have you covered.

### Vaccinations

For  
Adults & Children



Travelling overseas exposes numerous risks. We'll make sure all your travel vaccination needs are up to date.

## The Benefits of Wimbledon Park Travel Clinic include:

- **FREE\*** Travel consultation including advice and information tailored to suit your individual requirements.
- A Pharmacist is ALWAYS available.
- **Specialist Travel Health Pharmacists**
- Independent Pharmacist Prescribers
- Competitively priced travel vaccinations, medication and accessories
- Provision of prescription only anti-malarials and antibiotics
- Prescriptions for regular medications you need during your trip.



## CALL TODAY AND BOOK AN APPOINTMENT!

D PARRY CHEMIST  
124 Arthur Road  
Wimbledon Park  
London  
SW19 8AA  
Phone: 02089460414

THOMAS JAMES CHEMIST  
385 Durnsford Road  
Wimbledon  
London  
SW19 8EF  
Phone: 02089460740

## Why Wimbledon Park Travel Clinic?

### Fast

Call us now or Just drop by the clinic to make an appt.

### Cost

Competitive Prices

### Travel

Easily located with a range of transport links

### One-Stop

All your travel requirements under one roof

### Open

Open 5 days a week



An alternative approach should therefore be explored, which contains all the Wards which are demonstrably 'Wimbledon', with the addition of **adjoining** Wards so as to meet the criteria. Some options for this approach are set out below.

(The GLA 2013 projected population totals are given in brackets for information.)

The numbers of Electors in each 'Wimbledon Ward' of the Borough are:

ABBEY	6376	(10,400)
CANNON HILL	6559	(9,300)
DUNDONALD	6046	(9,350)
HILLSIDE	5666	(9,050)
MERTON PARK	6329	(9,550)
RAYNES PARK	6607	(9,800)
TRINITY	6424	(9,900)
VILLAGE	5633	(9,900)
WEST BARNES	6831	(9,950)
WIMBLEDON PARK	7034	(11,300)

.....  
Total electorate                      **63,505**                      (97,150)

There will have been some variations since 2013 due to redevelopment, changes of use etc., but on the basis of these figures it is clear that to conform to the BC's guidelines, two additional Wards would need to be added to the 'Wimbledon **Wards**' constituency.

These **need to respect** the BC criteria, and be able to be clearly seen as a justified geographical/social addition to the group of 'Wimbledon Wards'.

There are three such possible Wards within the LB Merton; the number of Electors (and the total projected population figures) for each are shown:

**LOWER MORDEN 6491 (9,150)**

In LB Merton

Shares boundaries with West Barnes, and Cannon Hill in the 'Wimbledon group' of Wards, and also adjoins the St Helier Ward

Not a strong link to either the Mitcham centre or to Sutton

**COLLIERS WOOD 6511 (10,800)**

In LB Merton

Shares boundaries with Abbey and Trinity Wards in the 'Wimbledon group' of Wards

Not a particularly strong link to the Mitcham centre

**Established locally over 20 years**

**K.D. RAYNSFORD**

**Landscape Gardening and Building**

**Paving and Patios - Brickwork and Garden Walls**

**All types of Fencing and Decking - Patio Cleaning**

**News Lawns and Turfing - Trees Pruned and Felled**

**Internal/External Painting: Guttering and Roof Repairs**

**All types of building work undertaken**

**For a free estimate and expert advice**

**Tel: 0800 2 118 618**

**07946 338 456**

**Advertising in this magazine**

**Contact Pamela Healy**

**pam.2015@outlook.com**

## **VOLUNTEERS NEEDED TO DELIVER OUR NEWSLETTER**

We need volunteers to deliver our newsletter to each of the following roads **Havelock Road, Kingsley Road, Kohat Road, Ashcombe Road and Gap Road**. If you live in any of these roads and could spare an hour or so three times a year to deliver our newsletter in your road, and possibly others, we would be very grateful.

We will deliver the newsletters for your road to your door. If you would like to help please contact **Pamela Healy** at **pam.2015@outlook.com**.

## **ST HELIER 6942 (10,500)**

### **In LB Merton**

Shares boundaries with Cannon Hill and Merton Park in the 'Wimbledon group' of Wards, and also adjoins the Lower Morden Ward

Not a strong link to the Mitcham centre

Of the above, Lower Morden appears to be the optimum addition to be joined with the 'Wimbledon group', with either Colliers Wood or St Helier being the second choice.

Adding the number of new Electors in the two additional Wards to the 63,505 figure for the 'Wimbledon group' of Wards, the totals would be either  $63,505 + 6491 + 6511 = 76,507$ ,

or  $63,505 + 6491 + 6942 = 76,938$ .

Both totals fall within the optimum range of between **71,031 and 78,507**.

Other possible additional Wards in adjoining Boroughs could be considered, such as ROEHAMPTON or WEST HILL in LB Wandsworth, or the LB Sutton Ward of ST HELIER.

But these options have not been taken further at this stage.

As to the Mitcham centre, it should have its own constitutional identity by being quite independent of the 'Wimbledon group' of Wards. It would have the 8 remaining Merton Wards (with approximately 57,000 Electors) and require the addition of perhaps 3 Wards now within adjoining Boroughs (not explored at this stage).

The LB Merton would, in this scenario, continue to deal with just the two MPs, rather than the five being proposed in the BC consultation.

## **CONCLUSION**

There is a clear sense of community and identity for both Wimbledon and for Mitcham.

Combining parts of them in a single entity (as currently being proposed by the BC), and splitting off Wards that are clearly part of Wimbledon, or part of Mitcham, fails to recognise the local sense of community. The current BC proposals for the LB Merton are considered crude and unacceptable, and would not meet the BC's own criteria.

The alternative grouping as suggested above is therefore put forward for consideration."

*Iain Simpson*

# NAISMITH ENGINEERING



Serving Wimbledon Park for the past forty years

**5%**  
**Discount**  
when you  
mention this ad

- Car Repairs & Servicing
- M.O.T. Preparations
- Complete Engine Overhaul
- Vehicle Collection & Delivery Available

**020 8947 1808**

**NAISMITH  
ENGINEERING LTD**

176 Arthur Road  
Wimbledon Park SW19 8AQ  
020 8947 1808    020 8947 3352

**YOUR LOCAL  
GARAGE**

## W.P.R.A. Committee 2015/2016

Ken Ball	20 Stroud Road	SW19 8DH
Kathy Blackburn	51 Ryfold Road	SW19 8DF
Spike Clarke	30 Home Park Road	SW19
Beate Eberhardt	17 Crescent Gardens	SW19 8AJ
DeNica Fairman - <b>Membership Secretary</b>	3 Strathmore Road	SW 19 8DB
Pamela Healy - <b>Advertising</b>	1 Brooklands Ave	SW19 8EP
Nigel Israel	14 Ryfold Road	SW19 8BZ
Mamoona Jahangir	260 Durnsford Road	SW19 8DS
Pareesh Modasia	124 Arthur Road	SW19 8AA
Michael Moore - <b>Horticulture</b>	344 Durnsford Road	SW19 8DX
Elaine Sandon	90 Ashen Grove	SW19 8BN
Michael Tyler - <b>Planning</b>	Cromwell Road	SW19
Iain Simpson - <b>Chairman &amp; Newsletter Editor</b>	56 Home Park Road	SW19 7HN
Peter West - <b>Planning</b>	33 Cromwell Road	SW19
Cllr Janice Howard, ex officio	Dora Road	SW19
Cllr Oonagh Moulton, ex officio	21 Melrose Avenue	SW19 8BU
Cllr Linda Taylor ex officio	Pine Grove	SW19





## *Carmela Guida's School of Ballet*

RAD BALLET  
MODERN/CONTEMPORARY  
BK BALLET FLOOR BARRE  
ADULT CLASSES

...IN EAST PUTNEY  
AND WIMBLEDON PARK

To arrange a free trial class visit:

**[www.carmelaguidaballet.co.uk](http://www.carmelaguidaballet.co.uk)**

## **Oakley Locksmiths Ltd**

We are a family run business based in Southfields since 1987. Our company offers free no obligation quotations on all types of security for both the residential and commercial markets. Our fully trained locksmiths supply and fit all makes of locks and key cutting in our shop starts from £2.50.

81 Replingham Road

Southfields, SW18 5LU

020-8871-1238

[www.oakleylocksmiths.co.uk](http://www.oakleylocksmiths.co.uk)

## **DECORATOR HANDYMAN**

Established in Southfields since 2002,  
I offer a complete painting, decorating  
and handyman service to local  
residents at reasonable prices.  
Excellent references available.


To discuss your requirements  
and to arrange a free quotation  
without obligation,  
please call Nigel Plumbe:

**(H) 020 8871 9687**

**(M) 07939 310292**

## Index of Advertisers

<b>Accounting</b>	<b>ABK Accountancy and Tax Services</b>	<b>7</b>
<b>Architects</b>	<b>Tectonics Environmental Design</b>	<b>23</b>
<b>Ballet</b>	<b>Siegeris School of Dance</b>	<b>31</b>
	<b>Carmela Guida School of Ballet</b>	<b>41</b>
<b>Carpenter</b>	<b>Daniel Smith</b>	<b>13</b>
<b>Creative Workshops</b>	<b>Workshop 305</b>	<b>25</b>
<b>Electrician</b>	<b>Eddie Driscoll</b>	<b>23</b>
	<b>HM Electrical</b>	<b>19</b>
<b>Engineering</b>	<b>Naismith Engineering</b>	<b>39</b>
<b>Estate Agents</b>	<b>IMI Property Solutions</b>	<b>17</b>
	<b>Burlington</b>	<b>9</b>
<b>Garden Design &amp; Build</b>	<b>K D Raynsford</b>	<b>37</b>
<b>Gifts and Cards</b>	<b>Chalk</b>	<b>13</b>
<b>Locksmiths</b>	<b>Oakley Locksmiths Ltd</b>	<b>41</b>
<b>Legal and Financial</b>	<b>Z Group</b>	<b>27</b>
<b>Painting &amp; Decoration</b>	<b>Nigel Plumbe</b>	<b>41</b>
<b>Pharmacy</b>	<b>D Parry</b>	<b>35</b>
<b>Plumbing</b>	<b>Adam's Plumbing</b>	<b>7</b>
<b>Restaurants</b>	<b>Chicken Cottage</b>	<b>44</b>
<b>Schools</b>	<b>Little Learners</b>	<b>15</b>
	<b>Wimbledon Study</b>	<b>43</b>
<b>Solicitors</b>	<b>McGlennons</b>	<b>20,21</b>
<b>Stain Glass &amp; Leaded lights</b>	<b>Coriander</b>	<b>11</b>
<b>Windows</b>	<b>SPS Timber Windows</b>	<b>2</b>



**Boost your  
child's  
confidence**

Kumon's **maths and English** study programmes are tailored to your child's individual needs, nurturing their independence and enthusiasm for learning.

Contact your local Instructor for a free assessment.

**Wimbledon Study Centre**

Carmen Garcia **020 8945 3495**

[wimbledon@kumoncentre.co.uk](mailto:wimbledon@kumoncentre.co.uk)

**Classes held at** The Mansel Road Centre, Mansel Road, Wimbledon, SW19 4AA

**Classes on** Monday and Wednesday 3.30pm - 5.30pm

**KUMON**

[kumon.co.uk](http://kumon.co.uk)

Fees vary. Please refer to your local study centre.





**WISHING ALL  
OUR CUSTOMERS  
MERRY CHRISTMAS  
AND A  
HAPPY NEW YEAR**

**NO FESTIVE MENUS OR FANCY CUPS  
JUST THE SAME GREAT TASTING CHICKEN  
ALL YEAR ROUND**

**WE NOW DELIVER!\***

**OPEN 11AM-11PM MON-SUN**

**393 DURNSFORD ROAD**

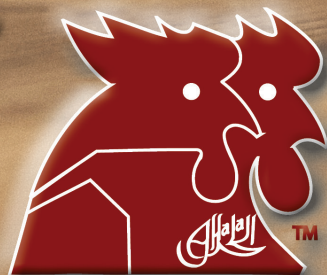
**WIMBLEDON PARK**

**LONDON SW19 8EE**

**0208 947 2179**

**WWW.CHICKENCOTTAGE.COM**

\*MINIMUM ORDER VALUE £15 & 1/1 MILE STORE RADIUS RESTRICTION



**CHICKEN  
COTTAGE**