



**Wimbledon Park
Residents' Association**

Christmas 2018



***Remembrance
1918-2018***

wimbledonpark.com

sps timber windows



■ box sash windows ■ casement windows ■ doors ■ plantation shutters



- Award-winning sps timber windows is celebrating its 20th year as South West London's most established specialist in the design, manufacture, installation and finishing of premium quality, energy-efficient, bespoke timber windows and doors, including
- Box sash windows, casement windows, front doors, French doors, folding sliding doors.
- Custom made to "A" rated specifications in Accoya® wood.
- Accurate representation of period designs and features.
- Double-glazed and draught proofed.
- Contact us for a quotation.
- **Wimbledon Park Residents' Association Christmas Offer:**
Receive up to £150 John Lewis Vouchers (T&C's apply).
Quote offer code WPRA.

Showroom 61 Revelstoke Road, Wimbledon Park, SW18 5NL

www.spstimmerwindows.co.uk

info@spstimmerwindows.co.uk

020 8879 3443



Christmas edition 2018

Contents

Chairman's Report	4 & 5
Update from Stephen Hammond MP	6 & 7
Wimbledon Park Policing (SNT)	8
Wimbledon Park Lake Watch	10
Wimbledon Foundation (AELTC Charity)	12 & 20
Friends of Wimbledon Park	14,16 & 18
Green Coffee	20
Planting Trees in the Park	26 & 27
What you didn't know about 5G	28 & 33
Join the WPRA	29
Conservation	30 & 32
Wimbledon Park Community Trust	31
Planning Applications	34 & 36
WPRA Membership Secretary required	37
Crime Statistics	38
Committee List	40
Index of advertisers	42

**All advertising enquiries to: Pamela Healy
Email: pam.2015@outlook.com**

**Editorial help needed. Contact Iain Simpson on 020 8947 1301
email: iainsimpson@imi-consulting.com**

Chairman's Report

AGM

The association AGM was held on the 23rd October in Wimbledon Park Hall. There was an excellent turnout of approximately fifty residents. We were pleased to welcome Stephen Hammond, our MP, as guest speaker.

Over the past year most of the important events had been covered in detail in the various newsletters so it was sensible to just highlight some of the key ones such as the results of the Boundary Commission consultation which, happily, resulted in Wimbledon and Wimbledon Park being kept together. Stephen noted that over seven hundred people in the borough responded to the consultation. The final recommendations were submitted to the government in September this year and will now be considered by Parliament some time in the early new year.

There was a great deal of planning activity during the year and Pam Healy gave an update on those that were still live. In particular there was an unconfirmed rumour that the 'Woodman' pub had been leased out and would open before Christmas (see the article on Pages 36 and 38). Our success with opposing the application for the Concrete Batching Plant in Waterside Way was noted. Also there was a new application relating to the stadium seeking to make amendments under Section 73, which is for non material or minor amendments. As the proposed changes are certainly not minor, we are challenging the application.

Stephen Hammond, in his address, mentioned two major issues of concern to everyone. Bins and Brexit. He agreed that the size and rollout of the new bins had been very unsatisfactory and the one size fits all policy was causing many residents a problem. Also the contract with Veolia was not working well. It is clear that they are underperforming and that the Council is not enforcing the terms of the contract. Streets are dirty and a lot of bins are not being emptied in timely fashion. Stephen went on to explain what was happening with Brexit. In a very lucid and thoughtful way, he summarised the various options and possible results that he thought might arise in the next few months. Everyone was very grateful for his insights.

Pollution

Air quality is now a major topic for everyone. We are continuing to monitor air pollution with diffusion tubes around the Ward and have them analysed by Friends of the Earth. The Council has recently published an Air Quality Action Plan (AQAP). This has a number of important stated objectives. We are particularly concerned to see what real changes the Council will effect to reduce pollution in the Borough and will be reporting on that to residents on a regular basis. This is a regular topic at meetings of 'Green Coffee' (see article on page 20).

Possible sale of Wimbledon Park Golf Club (WPGC) Lease

Most residents will by now be aware of the recent, substantial, offer by the AELTC to buy out the balance of the lease of the Golf Club. The Golf Club was, very controversially, sold to the AELTC in 1992 by the Council. The Golf Club has

recently had a members meeting to agree a change in the constitution to enable more members to share in the proceeds of sale - should it be agreed. I understand that the defining meeting will be held in December. Whilst one can understand the desire of the AELTC to be in a position to expand its facilities, many residents are fearful for what changes and development may emerge. The Golf Club sits in part of the original Capability Brown designed park, which is Grade 11* listed. It is classified as Metropolitan Open Land which means it should be protected from inappropriate development. I understand that the AELTC wishes to create a number of grass courts in order that they can hold the qualifying event there rather than in Roehampton. Also there may be some reassurance to be drawn from AELTC's comments at the time of the first WPGC vote:

"Any future development proposals and philosophy will protect and celebrate the heritage of the parkland, respect the green open spaces and stay true to our ethos of tennis in an English garden, and – importantly – be delivered in partnership with the local community. For the avoidance of doubt, there never has been and never will be any plans to build multi-storey car parks and shopping villages or any other structures that would be completely out of character for the AELTC and The Championships."

New stadium application 18/P3354

This application was submitted under the Section 73 procedure for various changes to the scheme which the Council had already approved. As a result, there was not wide circulation of the application by the Council and we did not find out about it until it was brought to our notice by a local resident.

Subsequently, we discovered that the Association had been notified but that the address used for mailing was completely wrong.

Section 73 procedure is for 'Minor Material Amendments' only. It is clear to us that the amendments proposed by the applicants are not 'Minor'. As a result, we submitted an objection based on that premise and the many changes proposed; in particular the proposed removal of the 'Crèche' and 'Café', which had previously been agreed. We also questioned the accuracy of the environmental information provided.

Following the submission of our objection we decided that such was the importance to the community of the proposed changes, we should secure the services of a planning lawyer to reinforce our objections. Naturally this was and is an expensive pursuit. Nevertheless, with the help of some sympathetic local organisations, we managed to secure sufficient funds to retain an experienced lawyer to write an appropriate letter to the Council. I would like to highlight the important contribution of Peter West and Mike Tyler, Committee members, in writing our objection and securing our excellent legal assistance.

That is where we are at the moment. I will update you when there are new developments to report.

Wishing you all a very Happy Christmas and a Happy New Year

Update from Stephen Hammond MP

I am once again grateful for the opportunity to contribute to the Wimbledon Park Residents' Association newsletter. I would like to take this opportunity to wish you and your family a Merry Christmas and a Happy New Year.

The 2018 Budget

I welcomed the Budget delivered by the Chancellor in October. I was particularly pleased to see rate relief for small businesses, a £20.5 billion real terms increase in the NHS budget and a tax cut for millions of people. I was particularly pleased about the reduction of business rates for firms with a rateable value of less than £51,000 which I think will be particularly useful for businesses in Wimbledon Park. I recently held a street stall on Arthur Road and this issue was raised with me by a number of local businesses.



During the Parliamentary debate on the Budget, I raised the issue of the interest rate charged on student loans. This can be as high as 6.1%, which is unfair and could put people off going to university. I asked that the Government consider this issue again.

You can read my full speech on the Budget here: <http://bit.ly/2Rqqlqb>

Mucky Merton

Large numbers of people are continuing to get in touch with me to report litter and fly tipping as well as issues with bin collections following the introduction of wheelie bins. Indeed, I spoke about the problem of the new waste collection arrangements at the WPRA AGM. Your three local councillors and I are always happy to report complaints on your behalf to the Council.

We are fortunate to live in such a beautiful area, and so it is no wonder that residents are so frustrated when the Council cannot fulfil the basic function of emptying bins on time and sweeping our streets.

Crossrail 2

There is no confirmed progress on Crossrail 2 to report. The 'Independent Affordability Review', which is examining ways of making the scheme more affordable, has submitted interim recommendations to the Government.

Work now continues on a more detailed report and I will continue to hold regular meetings with the Chief Executive of Crossrail 2 throughout the process so that I can keep you updated. However, I am not expecting any news until spring next year.

You can read more about this review here: <http://crossrail2.co.uk/news/major-new-review-brings-crossrail-2-closer/>

Brexit

Last, but not least, it would be remiss to not mention Brexit. As I said in my last column here, it is dominating national politics. I am doing all I can to fulfil my promise at the last election to oppose a 'Hard Brexit'.

Events move very quickly and there is always the risk of what one writes being out of date very quickly. So for the latest news on my work on Brexit, please do look at my website (www.stephenhammond.net), or follow me on Twitter: [www.twitter.com/s_hammond](https://twitter.com/s_hammond) or Facebook: www.facebook.com/stephenhammond.net

ABK

A.B.K. ACCOUNTANCY & TAX SERVICES

For All Your Accountancy, Taxation and Business needs

- Accounts
- Taxation
- Self-employed
- VAT Returns
- Lettings Accounts
- Wages -PAYE
- Partnership Accounts
- Tax advice

- Book Keeping Services
- Management Accounts
- Self- Assessment Tax Returns
- Limited Company Accounts
- Company Formation
- Sub-contractors C.I.S.
- Tax Refunds

All services at competitive rates

59 Ashen Grove, Wimbledon Park, London SW19 8BL

Tel: 020 8947 9931 – Fax: 020 8879 3412 – Mob: 07989770847

Email: abk.accountancy@btinternet.com Website – www.abk-accountancy.com

Wimbledon Park Policing – Safer Neighbourhood Team

Road safety is a real concern for our residents: with local ward Councillors Oonagh Moulton and Janice Howard, we have been organising Community Speedwatch sessions with the local Transport Police. So far, we have concentrated on Welling-ton Road (by the Wimbledon Park Primary School), Revelstoke Road and recently Home Park Road, and we continue to receive requests from residents to hold regular Speedwatch sessions across the ward. We are asking the Council to introduce a speed limit of 20mph on all residential roads where residents have raised safety issues.

Residents are also reporting concerns that roads such as Haydon Park Road are being used as rat runs by large HGVs in breach of applicable weight restrictions. Again we are asking both the Police and the Council to look again at what they can do to step up enforcement against lorries using our roads illegally.

Concerns about the state of our streets continues, as the Council seems unable to manage the appointed contractor to clean our streets, sweep up leaves and empty litter bins on time. The change to the new fortnightly bins system has been challenging for local residents, to say the least. Ward Councillors are receiving record numbers of complaints of missed collections and even a failure to deliver the new unsightly wheelie bins.

The weekly (sometimes even daily) fly-tips on the Parade of shops on Haydons Road also continues – we have now raised this to the highest level of the Council and covert surveillance has been requested, which the Council is now considering if fly-tips continue. We believe part of the problems lie with the Council being unable to manage the distribution of the required blue and purple bags to residents living above the shops. To date, following our requests for action, three of the shops have now been fined, and several Fixed Penalty Notices have also been issued to residents.

As we move into the winter months, we are extremely grateful for the work of our excellent local ward Police officers, Officer Paul Roberts and PSCO Officer Lisa Matthews – it's great to see them out and about in the Grid and across our ward. We ask residents to be vigilant, especially during the Christmas holiday season and watch out for neighbours' properties if they are away. If anyone believes a crime or potential burglary/car theft may be in progress, please do not hesitate to call 999 night or day.

Finally, the proposed redevelopment of the football stadium at Plough Lane continues to be controversial – the developers have removed the much wanted crèche from the design, brought in an additional block of flats, removed a flood mitigation measure and even squared off the previous softer curves from the proposed stadium's approved design plans, all seemingly to make additional profits for the developers. Ward Councillors have asked that last minute changes such as this should not be allowed, and that any material changes such as these clearly require fresh planning.

From your local ward Councillors Oonagh Moulton, Janice Howard and from me, we wish all the residents of Wimbledon Park a very Happy Christmas.

Cllr Ed Gretton

19 Braemar Avenue; edward.gretton@merton.gov.uk



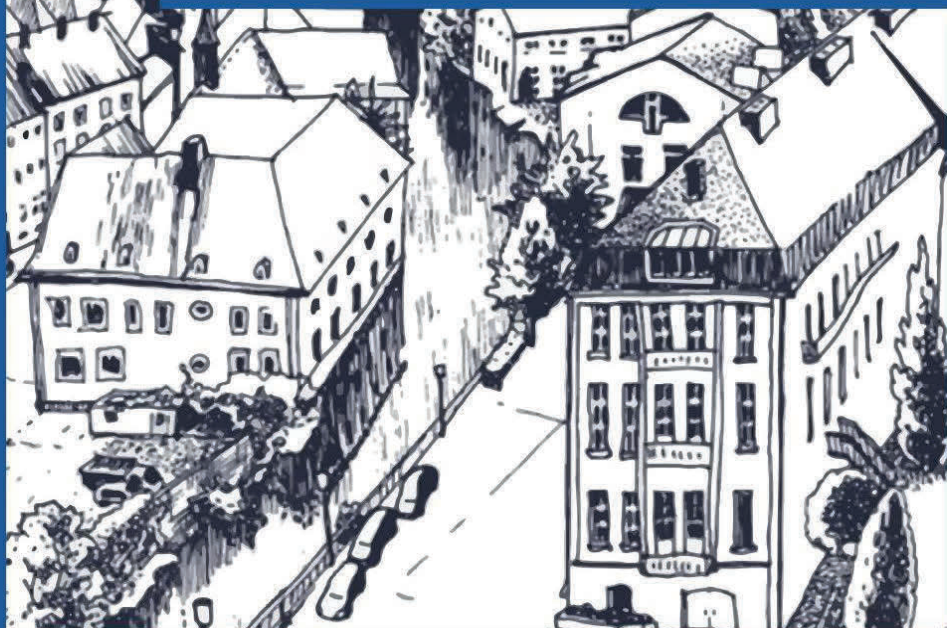
**ROBERT HOLMES
& COMPANY**

Surveyors, Valuers & Estate Agents



At the heart of the community

We are pleased to support the *Wimbledon Park Residents Association*



For all your property requirements find us at our offices

Wimbledon Village
020 8947 9833

Coombe
020 8947 1100

Mayfair
020 7709 7120

www.robertholmes.co.uk

Wimbledon Park Lake Watch – November 2018



The rapid increase in the small carp population, noted in the last WPRA Newsletter, has brought with it an increase in the population of fish-eating birds. Herons can now be regularly seen, and also the Great Crested Grebe, a bird which first inspired people to set up the Royal Society for the Protection of Birds.

Also welcome are a pair of kingfishers who have returned after an absence of 2 years.

The greatest influx of fishing-eating birds, however, has been the cormorants, up to 20 being visible first thing in the morning. Cormorants were originally only feeders on the sea shore, but the loss of fish in the sea has driven many of them inland, and populations of these birds now live exclusively on inland lakes and rivers, including the River Thames.

During the day, teams of 6 to 8 cormorants can be seen fishing as a team in the middle of the Lake eating up many of the small carp which appeared in the summer.



They will then rest up on the pontoons of the sailing club, spreading their wings in a characteristic manner, before resuming their feast of small carp. The large fish such as bream, tench and large carp, will be hunkering down in the deeper parts of the Lake, sometimes in a state of semi-hibernation, until the approach of spring.

So it seems, what nature gives with one hand, it will often take away with the other.

By Tony Borkowski, Chairman of the Wimbledon Park Angling Club

CORIANDER

Traditional Stained Glass and Lead Lights

WE HAVE MOVED
TO OUR NEW SHOP AT:

**27, KINGSTON
ROAD,
SW19 1JX**

020 8947 7635

www.corianderstainedglass.co.uk



Introducing the Wimbledon Foundation

The Wimbledon Foundation, the official charity of The All England Lawn Tennis Club and The Championships, was established in 2013 and since then has been supporting the local community in the neighbouring boroughs of Merton and Wandsworth by funding a wide range of organisations and projects.

This funding – delivered through structured grant programmes and in-kind support – has helped people facing a range of issues such as poor physical and mental health, poverty, isolation and homelessness, through to reading programmes in schools, swimming lessons for refugee children, street opera productions, and helping young families learn to cook healthy meals.

So far this year the Wimbledon Foundation has awarded grants and donations totalling £500,000 to more than 70 local community projects. One such project – especially relevant as the cold weather begins to bite – is the YMCA Merton Winter Night Shelter, run in partnership by 14 local faith groups and a team of 300 volunteers. Guests are given a hot nutritious meal, a warm dry place to sleep and support in getting back on their feet. Rob, a 38-year old, who spent 10 weeks at the shelter last winter, said: “The Merton Winter Night Shelter saved my life. If I had stayed on the streets, I would have had a relapse into drugs and alcohol, I know it. I can’t thank the team enough for all that they have done for me.”

Examples of other projects receiving funding include:

- **Hearts & Minds, which runs a peer support group for young people experiencing mental health issues;**
- **The National Autistic Society Merton Branch, which has created a sensory equipment library and runs occupational therapy sessions for children with autism and their parents; and**
- **Merton Mencap, which runs a weekly Going Out Club for 15 young people with learning disabilities.**

Currently, the Wimbledon Foundation is taking applications (until 13 February 2019) for grants of between £500-£5,000 from its Community Fund, run in partnership with the London Community Foundation. As the name suggests, the purpose of the fund is to benefit the community, so if you are involved in charity or volunteer work – or have a friend who is – which is focused on areas such as disability, young people, BAME groups, older people or the unemployed, it would be worth exploring if a Community Fund grant from the Wimbledon Foundation can help.

To find out more about all the great work the Wimbledon Foundation does visit wimbledon.com/foundation or follow @WimbledonFDN on Twitter and Instagram.



DANIEL SMITH

CARPENTER AND SPECIALIST JOINER

Beautiful, bespoke carpentry including:

- Alcove Bookcases • Cupboards
- Wardrobes • Bookshelves
- Sash Windows • Doors
- Home Offices • Radiator Covers

Tel: 020 8874 5205 Mobile: 07950 251026,

E-mail: daniel-smith1@hotmail.co.uk

48 Lavenham Road Southfields London SW18 5HE



* Gifts *

* Cards *

* Jewellery *

* Toys *

Southfields' Aladdin's Cave!

Gifts & cards for everyone

Monday - Saturday 9:30 - 6:00

Sunday 10:30 - 4:30

41 Replingham Road, Southfields, SW18 5LT

www.chalkgifts.co.uk

020 8870 6125

Friends of Wimbledon Park

What a summer we had!

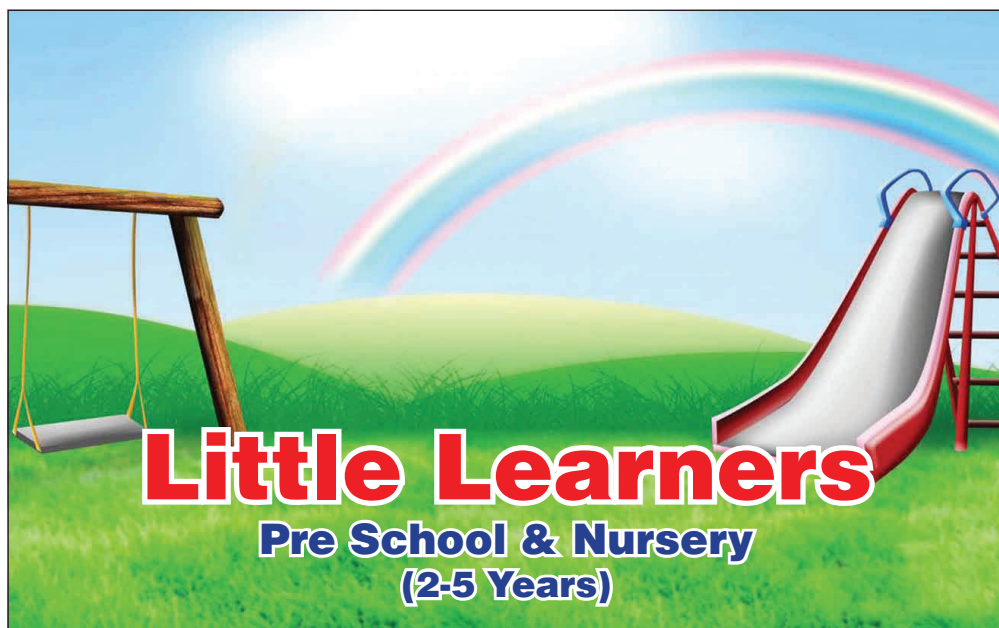
The heat, whilst pleasurable in many ways, led us to plea for help in watering some of the plants in the park that are our responsibility. The two planters (located at the entrances in Revelstoke Road and Wimbledon Park Road) and the newly planted Hornbeam all suffered during the hot, dry spell. Young Hornbeams require much watering, especially during their early years, and the edges of its leaves started to turn brown – a sure sign that it was thirsty. But it is clearly a sturdy little fighter and it is now looking upright and healthy! As for the planters I fear they have been in a rather unhappy place as the flowers appeared to die off and weeds gleefully took their place! Regrettably, due to staffing cutbacks, the students from St. Cecilia's



have been unable to tend to the planters this year so they fell into disarray. However, we have started work on them and the planter by Wimbledon Park Road has been weeded, trimmed and new plants (pansies and wallflowers) have been planted – it has been revitalised! The planter near Revelstoke Road is, however, still in need of tlc. Some remedial work is planned. Thank-you to all those of you who heard our cries for water and assisted in keeping the Hornbeam and park planters watered.

What news – about BBQs?

More victims of the hot weather were BBQs in the park. Following advice from the London Fire Brigade, Merton Council imposed a ban (not always successfully) on BBQs, albeit a temporary one, in all Merton parks. BBQs, as we know, have been a contentious issue for a while now and they generate lots of conflicting opinions particularly on our Facebook page. We recently sought clarification about what is happening with BBQs from Merton Council. The ban has not been lifted and in their email the Council state that 'they will not be actively promoting BBQs, but neither are we (they) banning them outright as a matter of policy.' The email finishes off by saying that they will continue to keep the matter 'under review.' So, no change then!



- Wrap around care & pick ups from some schools
- Nursery summer playschemes
- Registered Good by Ofsted

Two locations...

IN THE PARK -

Durnsford Pavilion
Durnsford Recreation Ground Wellington Road
Wimbledon Park SW19
Tel: 0774 9899976

IN THE GARDENS -

Coronation Gardens
95 Pirbright Rd
Southfields SW18 5NB
Tel: 07749 377 253

Please call for information on days, session times and pick up locations

www.littlelearnersinthepark.co.uk

The Mighty Oak

Did you know that there are six English oak trees in the public park that are older than 200 years? These date back to the landscaping of the 18th century park by Lancelot Brown. Four are in Horse Close Wood and one in Ashen Grove Wood, but one stands alone, majestically, at the path junction east of the bowling green. This fine veteran tree is in its middle age, approximately 215 years old. An oak tree is not considered ancient until it is at least 400 years old! It is a wonderful link to the past. In recent times the tree has suffered from traffic cutting into the corner and is also at risk from BBQ fires and hot coals left



lying around. The Merton Tree Warden's Group and the FOWP have put forward plans to fence off the tree in the same style as the railings around the bowling green and to underplant it with shrubs and spring bulbs. This will not only make a feature of the tree but also protect the soil and roots from any further inadvertent harm. Access by vehicles to the old bowling green will also be improved so that they do not need to leave the tarmac road to enter. Hopefully, this will resolve the ongoing problems and help the tree achieve ancient status!

All on a sunny, autumnal day!



Great work was done by our small band of volunteers and Merton Tree Wardens recently. They weeded the areas around the young trees, planted two years ago and growing vigorously on the edge of the Wimbledon Park Road car park with great gusto. And this was not all! They followed it up by raking the clippings of the trimmed area of the Glade (using a

hay rake.) This work is designed to keep the invasive woody species at bay, so that the area remains a flower rich grassland. A big thank-you to all our volunteers and the Merton Tree Wardens for their hard work and commitment.



CREATIVE WORKSHOPS IN WIMBLEDON!



**Local evening and weekend
workshops running throughout
the year, book today
through our website.**

All abilities welcome

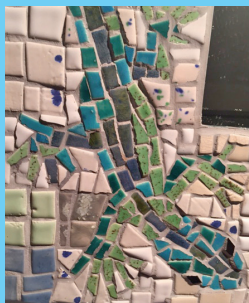
9 Weir Road, Wimbledon SW19 8UG
020 8971 9172 [@Workshop305CIC](https://twitter.com/Workshop305CIC)
info@workshop305.com
www.workshop305.com



WORKSHOP 305
Community Interest Company



Social Enterprise UK
Certified Member



End of the road for the Poplars

Approximately 20 of the Poplars running in the (partly) double row along the north east of the rail side path will need to be removed. These are Railway Poplars, (Regenerata variety) and probably date back to the landscaping of the public park in the 1920's. They are relatively short lived and present a management problem as they develop heavy branches when mature which requires much pollarding to keep them safe. Also, they are now diseased, and the tree stems are hollow making them prone to falling over. Sadly, it appears that they have reached the end of their lifespan. In conjunction with the Merton Tree Wardens we will be planting some new trees probably Hornbeams in that area. No planting will take place on the immediate rail side boundary where there are already young trees growing amid the hedging which was planted about twenty-five years ago. A new tree era is about to begin.



The Capability Brown Festivities Weekend – 8 & 9 September

A big thank-you to everyone who took part. We had great feedback which delighted us! So much took place! Many experienced the varied sports' activities offered by leading clubs whilst others gravitated to exhibitions run by local groups including a display of historic postcards. The bat walkers saw six different species of bats! Great enthusiasm marked the Zumba session as people danced to the Latino music. Talented students from three local schools - Ricards Lodge, Southfields Academy and St. Cecilia's enthralled audiences with their

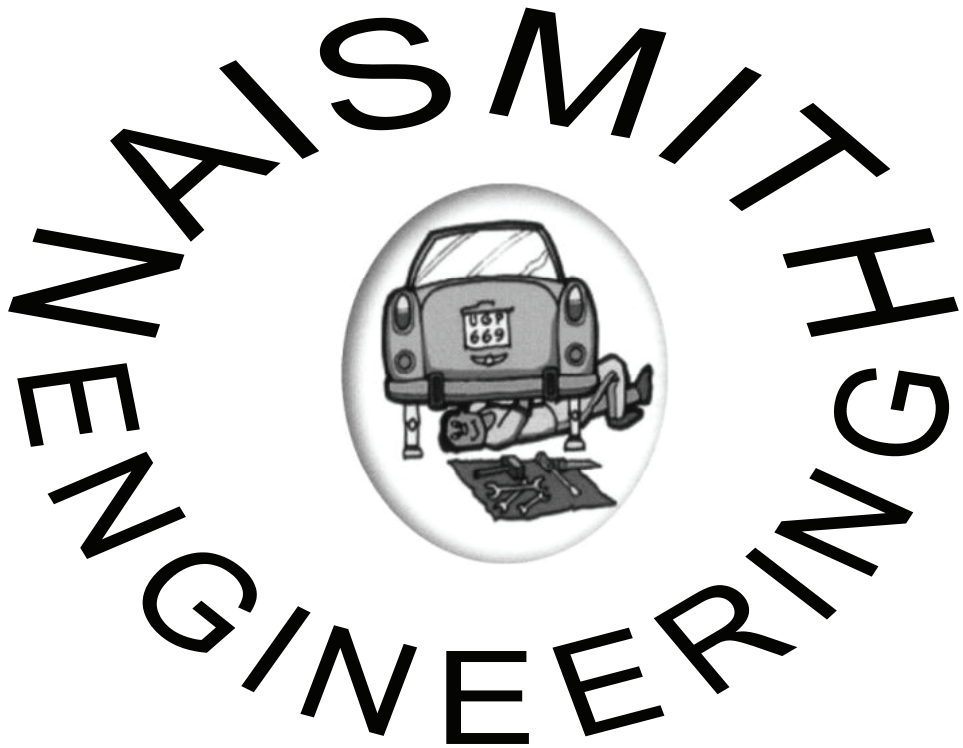


dance and music performances. Participants of the carp fishing were lucky enough to land themselves some huge carp. The Heritage Park walk highlighted both its fascinating history and evolution. There was victory for The Wimbledon Club Ladies as they beat Eastbourne College Ladies in the tennis tournament. Steffi Shields, Capability Brown aficionado, finished off the weekend by giving an illustrated presentation about Capability Brown - a most fitting ending.

Keep up to date by following us on Facebook @Friends of Wimbledon Park

We also have a new Twitter address FriendsoWP@FoWimbledonPark

Website: www.friendsofwimbledonpark.org.uk



Serving Wimbledon Park for the past forty years

5%
Discount
when you
mention this
ad

- Car Repairs & Servicing
- M.O.T. Preparations
- Complete Engine Overhaul
- Vehicle Collection & Delivery Available

020 8947 1808

NAISMITH

ENGINEERING LTD

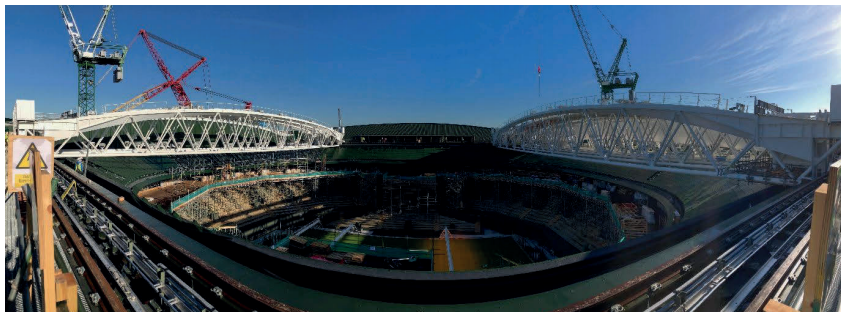
176 Arthur Road

Wimbledon Park SW19 8AQ

020 8947 1808 020 8947 3352

**YOUR LOCAL
GARAGE**

Over at the Foundation's All England Club home, meanwhile, the three-year programme to put a retractable roof on No.1 Court in time for next year's Championships continues apace as the last of the 11 roof trusses was lifted into position in mid-November.



No.1 Court roof progresses

Each truss is 75 metres wide and weighs 80 tonnes and required the services of a special super crane to hoist them up.

From now on it's a question of fitting the fabric, hooking up the motors and checking it all works as it should. Simple really. Johnny Perkins

+++++

Green Coffee

Green Coffee is a networking group, meeting once a month. It's open to anyone interested in local environmental issues and provides an opportunity for people to exchange news, find out what is happening and to make plans to work together. Recent discussions have covered the new waste collection service, air quality, green spaces management, Sustainable Merton's community champions, as well as many other topics.

Some people attending are members of residents' associations or campaigning groups such as Merton Cycling Campaign and Friends of the Earth or gardening groups. Other attendees are just interested in local green issues. There is a round table format, so everyone has a chance to give their news. The discussions are summarised in the Green Coffee newsletter, which is circulated to everyone in the network. The group has been running for eight years now. There are 144 people in the network and usually 10-20 people attend each meeting. These are held generally on the first Tuesday of each month between 9.30 and 11am and the current venue is The Wibbas Down Inn, the Wetherspoons on Gladstone Road. These details may change, so it's best to check on the SEMBLE website, searching for 'Green Coffee'. Everyone is welcome to come along. For more information or to join the mailing list and receive a monthly newsletter, please contact Joyce on joycepountain@virginmedia.com

McGLENNONS Solicitors

Providing legal services in Wimbledon Park since 1995. We specialise in:

Wills & Lasting Powers of Attorney

Probate & Estate Administration

Residential Conveyancing

Leasehold Extensions & Freehold Enfranchisement

Landlord & Tenant

Dispute Resolution & Family Law

No charge - 20 minute initial consultation



Conveyancing
Quality



William Essex – Principal Solicitor | Barbara Morris – Consultant Solicitor
157 Arthur Road London SW19 8AD Tel: 020-8946 6015 www.mcglennons.co.uk

A1CARS

24 HOUR MINICAB SERVICE

FIXED PRICES FOR AIRPORT TRANSFERS

020 8947 1717

020 8947 2299

Book online: www.a1carslondon.co.uk



Transport
for London

Officially licensed private hire operator
Licensed by Transport for London

Local Dance School Success at New Wimbledon Theatre



Local Dance School Siegeris Dance celebrated their 10-year anniversary with a magical performance of “Second Star to the Right”, an adaption of Peter Pan, at the New Wimbledon Theatre last month.

Over 400 local dancers delighted audiences with 2 action-packed shows on 30th September 2018, filling the prestigious theatre with a near 2,000 strong crowd.





Arthur's Café

**Your Community Café
is open Monday to Saturday inclusive**

7.00am to 6.00pm

Where is it? Right next to Wimbledon Park Hall at 170 Arthur Road.

Great Food – Great Coffee – Great Service

Catering available for all kinds of parties

Call Yasmin on 07958598823

Wimbledon Park Hall - your community Hall

at 170 Arthur Road, Wimbledon Park

**All booking information can be found at
www.wimbledonpark.com**

or

Email: wimbledonparkhall@gmail.com

The production featured a selection of dazzling ballet, tap and modern dance routines, professional choreography and talented performances, all set to a truly inspirational mix of classical and upbeat music. Fabulous costumes ranged from teeny tiny starfish and snappy crocodiles to a mesmerising mermaid and jellyfish sequence, complete with fluttering tentacles.



The school worked tirelessly to give their students an incredible experience that they would never forget. The energy, excitement and sense of fun exuded from every single performance and you could see how much the dancers loved being part of such a spectacular production.



Siegeris Dance teaches ballet, tap and modern dance at 10 locations in the Merton area, from nursery age to adult classes. They also run The Ballet Boutique in South Wimbledon.



www.siegerisdance.com
The Ballet Boutique, 146 Merton Road, Wimbledon SW19 1EH
info@siegerisdance.com
[@siegerisdance](https://www.instagram.com/siegerisdance)

New ballet classes on Thursday afternoons at Wimbledon Park Hall and new modern and tap classes at Christ the King Church Hall on Saturday mornings.

FREE TRIAL classes available, information on www.siegerisdance.com



LORD'S TAVERNERS
Giving young people a sporting chance

MONDAY 17 DECEMBER 2018
ST. MARYLEBONE PARISH CHURCH, LONDON

CHRISTMAS CAROL CONCERT WITH THE STARS

SPONSORED BY MAGGIE AND ROGER SMITH

Supported by:

CLASSIC FM
100-102 FM

Join us at the Lord's Taverners annual
Carol Concert for all the family.

The evening features popular carols sung by the
ST. MARYLEBONE PARISH CHURCH CHOIR
and festive readings from our well known celebrity
guests, featuring two-time BAFTA winning actress
JOANNA LUMLEY, BBC series Versailles' star
JESSICA CLARK and acclaimed musician
JOE STILGOE.

The concert will be conducted by
NICHOLAS CLEOBURY, Head of Opera
at the Queensland Conservatorium Griffith
University, Brisbane and Founder Laureate of the
Britten Sinfonia and will be recorded for broadcast
in December on **CLASSIC FM**.

Further details of this year's unmissable line up will
be announced shortly.

TICKET PRICE

- £25 Standard
- £18 Groups of 6 or more
- £15 Groups of 10 or more
- Under 16's go free

TIMINGS

6:30pm concert



More information and to book:

lordstaverners.org/events
020 7025 0022

All funds raised will go towards the Lord's Taverners.
For full terms and conditions, please see the website.

Registered Charity No.: 306054

OSCR No.: SCO46238



Planting trees in the park

While Merton Council have been working on their long-delayed masterplan for the public park, volunteers have been getting on with improvements.

The trees in the park have a mixed history. The public park is only 7% of Earl Spencer's original 18th century park, but some trees survive from the original design. Horse Close Wood and Ashen Grove Wood date back to those times and are essential features of a Grade II* heritage landscape.

Through the middle of the nineteenth century, the park was leasehold farmland and then it came into increasing use for sports, finally being purchased by Wimbledon Corporation in 1915. With the development of the public park in the 1920s came much more tree planting, mainly with exotic species. A recent visit with tree specialist, Alan Harrington, found 80 species, mainly exotics. In the 1990s, Merton Council's Dave Lofthouse introduced nature conservation planting, notably of the hedgerows beside the tube line.

In recent decades, funding cutbacks have eroded the programme of planting and replacement and there's now no budget for either; there's money only for maintenance and safety. Unsympathetic pruning has butchered a Strawberry tree and a Short-leaved Japan Yew, and two Dawn Redwoods whose roots were damaging the tennis courts had to go. Other trees are becoming unsafe with age. Many Ash trees in the northern half of Horse Close Wood will need to be cut back severely, and the Railway Poplars either side of the perimeter path beside the tube line will have to go. Many Lombardy Poplars around the stadium have been taken down.

Merton is fortunate, however, in having a skilled and enthusiastic tree warden group, who work well with Council staff. Together with volunteers from the Friends of Wimbledon Park, including this Residents' Association, they have been planting trees in the 17th century Horse Close Wood. Aerial photographs from 1945 show that the western end was recovering nicely from previous use as a farmhouse, polo stables and piggery. Soon afterwards, however, the Municipal Borough of Wimbledon developed an untidy car park there, destroying woodland and compromising the view of the wood from the park.

Three years ago, trees were planted south of the car park to screen it from view and restore some of the losses. Eighty-five volunteers turned up to plant 1,000

native trees and shrubs. As befits such an old wood, the species were chosen to match the woodland type: English Oak, Small-leaved Lime, Field Maple, Wild Cherry, Alder, Aspen, Crab Apple, Hawthorn, Hazel, Blackthorn and Dog Rose. Further planting was done at the edge of the car park two years ago. Then the planting early this year was along the southern edge of the wood. This was designed to protect some veteran oaks that were threatened by irresponsible barbecue disposal. All these have had after care and are doing well.

Volunteers want to preserve an English Oak beside the old bowling green. This began life around the time of American independence, and could well date back to Brown's landscaping. It is threatened, not only by barbecue disposal, but also from vehicles parking or taking a short cut across the grass, which compacts the soil. The area below the tree will be fenced off and a Yew hedge planted to match the fences around the bowling greens. It's also planned to fill the gaps in the line of old Railway Poplars set in the mown grass beside the perimeter path.



Here, it's proposed to plant Hornbeam, a native tree that should last many years and which is suitable for this position beside a well-used path. With the hedgerow on one side of the path and a line of trees on the other, the design will match the woodland perimeter planting of the eighteenth century park, now lost under the housing of "The Grid".

Dave Dawson

What you didn't know about 5G

Following on from my last article about 5G, Merton Council has finally answered my inquiry after many attempts to find out the facts behind their proposed 'upgrade' of Merton's wireless communication systems as follows: "The Council will comply with all relevant public health and safety legislation and regulation. We have a contract with Arquiva that allows for the installation of 5G technology."

This confirms my fears that Merton residents will soon be affected by a huge increase in electromagnetic pollution wherever they live and will experience similar health effects to those reported in the US. My friend in Jacksonville/Florida just emailed me that 5G has been rolled out in her town and causes extreme sweating.

This latest report re the effect of 5G on wildlife also raises many questions:

<https://www.healthnutnews.com/hundreds-of-birds-dead-during-5g-experiment-in-the-hague-the-netherlands/>

If people reading this are still not convinced that 5G is a massive experiment without any previous testing they should check out

<https://www.5gspaceappeal.org/the-appeal/> for scientific evidence.

To allow such a new, highly questionable technology onto the market without prior testing for safety is against our Human Rights and raises big questions regarding the competence of 'Public Health England' who constantly raise alarm about the dangerous effects of sugar, fat and alcohol consumption on our health whilst wilfully neglecting the biggest threat to human health – the Elephant in the Room: 'Nonionizing Radiation'.

Unfortunately 'Public Health England', when questioned about prior research of new technologies regarding safety legislation and regulation (as referred to by Merton Council), has 'always' responded in the same way stating that:

"PHE is committed to monitoring the evidence applicable to this and other radio technologies, and to revising its advice, should that be necessary."

That's surprising as PHE obviously did not find it necessary to 'update' their advice after the publication years ago of the almost 2000 scientific papers in the 'Bio-Initiative Report' presented by eminent Scientists in this field. They also state:

Continued on Page 33

To Join the Wimbledon Park Residents' Association

Please complete this form and return it to us with your payment:

Name _____

Address _____

Post Code _____

Email*** _____

SUBSCRIPTION RATES

1 Year.....£5.00

3 Years.....£12.00

Donation.....£ _____

Payment Options:

By cheque - please make cheques payable to:

Wimbledon Park Residents' Association

Post to: WPRA, 56, Home Park Road, SW19 7HN

or

drop your subscription through the door of the our Chairman, Iain Simpson at
56 Home Park Road.

Email* If you would like to be included on an e-mail list for crime alerts,
WPRA updates and information on other important local issues,
please tick here**

☐

Please date...../...../.....

Conservation

The preservation of the character of our neighbourhood is a task that involves all of us as well as those with administrative obligations either elected or employed in local government to look after our environment and heritage, in our case the London Borough of Merton.

It is particularly rewarding to observe when individuals take on the task of preserving our built environment and one could say that every time that you see one of the houses in our neighbourhood being externally redecorated and maintained, we are witnessing a contribution to the preservation of our area.

One example that I wish to bring to your attention is the restoration of the timber railings on one of the properties at the top of Melrose Avenue. When first built early last century, a row of houses on Melrose Avenue, had a particularly interesting design for the railings facing the street consisting of two inverted solid rendered arched bases with painted timber railings over, per house.



Original railings - Melrose Avenue

Over the years the timber railings decayed and began to disappear or be replaced by other slightly alien solutions to the point where only one example was left in the whole street to remind us how elegant the original design was.

Walking by as we normally do on our way to Wimbledon Park Station I noticed that one of the railings was badly affected by dry rot and I was sad to see that the last example of these railings had its days numbered. To my great surprise and pleasure, a few days ago I discovered that the railings had been repaired and that one of the houses in Melrose Avenue still retains, for our benefit, the original outlook to the street as originally designed.

For my part I wish to express my thanks to those responsible for this small but significant restoration.

Continued on Page 32

The Wimbledon Park Community Trust

The Trust is pleased to invite applications for grants. Applications can be made at any time by individuals, groups, established organisations or existing charities.

The Wimbledon Park Community Trust was incorporated in October 2013 and subsequently registered as a charity.

The objects of the charity are:

‘The promotion of the benefits of the inhabitants of Wimbledon Park and the neighbourhood thereof (hereinafter called the area of benefit) without distinction, by the advancement of education and the provision of facilities in the interests of social welfare for recreation and leisure time occupation, with the object of improving the conditions of life for the said inhabitants.’

The Trust has a lease (99 years from 2013) from The London Borough of Merton, on the space known as Wimbledon Park Hall including the adjoining Arthur’s Café at 170 Arthur Road.

The main income of the Trust is derived from renting the hall and café.

General Guidelines:

- **The total limit of awards will be £10,000 for the current financial year.**
- **The maximum grant size that can be applied for is £5,000.**
- **The minimum grant size that can be applied for is £500, except in exceptional circumstances.**
- **The Trustees will have total discretion on awarding grants.**
- **All applications must give proper detail of the intended use of the grant money and what the ultimate benefit/outcome will, or is expected to, be.**
- **No grants will be given for revenue purposes; only for capital spending projects.**

Applications can be made at any time.

Please send them in writing to:

**Wimbledon Park Community Trust,
56 Home Park Road, SW19 7HN.**

All applications will be acknowledged.

**The latest available accounts for the charity can be found at
www.wimbledonpark.com**

Company No. 08727642

Registered Charity No. 1156930

Another interesting experience was provided during Open House 2018.

Amongst the houses open to visitors this year, there was one of the three houses designed by the well known modernist British architect Peter Foggo back in 1965 in a site at the junction of St Mary's Road and Alan Road.

The house open to the public on this occasion has been carefully and lovingly maintained by its current owners and it retains internally and externally most of its original features making it an extremely nice experience to visit a house that tells a story and is a record of the modern movement in architecture in Merton. The house is set in a generous south-facing garden with mature trees, one dating from a Capability Brown landscaping design for the area.

How do we protect this type of property from a natural interest from developers to intensify the use of the land? The owners, unlike many others that show less concern for the architectural heritage they live in, are exploring the option to promote the Listing of the property which would provide protection, to retain one of the very few examples of good modern residential design in the Borough.

I would also wish to extend my gratitude to the organisers of the Open House 2018 event and to the owners of the properties that were open to the public, giving us the opportunity to enjoy a closer look at some excellent examples of architectural and landscaping design that enrich our built environment so greatly.

I'm already looking forward to Open House 2019!



**Private dwelling by Peter Foggo, 1965 - St Mary's Road
Mario L Avendano, RIBA**

“PHE does not hold information about practices in the insurance industry.”

**So is PHE still ignorant of the fact that the Insurance Industry now sees Electro-magnetic Radiation as an ‘Emerging Threat’ and therefore offers no cover?
Really??**

The big question here is whether PHE has become unreliable due to influence of Mega-Corporate interests.

Should PHE not be aware and have the office research capability to be aware that overwhelming evidence exists that Radiofrequency Microwave radiation from cell phone masts, TETRA installations, Wi-Fi. Smart meters and now from the proposed 5G deployments - all generate reproductive system degradation. The evidence for this has been thoroughly set out by medical and scientific experts, for example by Dr Sarah Starkey in her submission to Parliament of December 2017 -

<http://data.parliament.uk/writtenevidence/committeeevidence.svc/evidencedocument/science-and-technology-committee/evidencebased-early-years-intervention/written/75325.pdf>

I also draw to your attention a comprehensive testimony by Dr M Pall - see <https://www.emfacts.com/2018/08/martin-palls-book-on-5g-is-available-online/> where we read that 5G inundation is likely to cause acceleration and magnification of diseases and degradation of all human (+ natural biological systems) so that, for example, "We may have a gigantic epidemic of spontaneous abortion due to the teratogenic effects. Another possibility is that instead of autism being one birth in 38, however horrendous that is, it could be one out of two, or even a majority of births."

If all this is too much info for the lay person to digest I suggest spending 9 minutes listening to Dr Pall summarizing the crisis which Britain + and world have slumbered into: <https://www.youtube.com/watch?v=kBsUWbUB6PE&feature=share>

Ingrid Pastl-Dickenson BRCP EMR

Bio-Electromagnetic Research Initiative

www.bemri.org

Editor's note: This article will be repeated on the website so that the links can be used.

Planning Applications in Wimbledon Park

12A Ravensbury Terrace

This warehouse style development up to 5 storeys at varying heights by the James Lawrence Group, will provide 24 flats in a mix of accommodation and office space on the ground floor. The demolition of the existing building is due to start soon. As part of the Section 106 Obligation a new footbridge over the Wandle will be created linking Ravensbury Terrace with Thornset and Grotton Roads; this should take the pressure off the Penwith Road and Garrett Lane junction crossings, which at peak times can be very congested for pedestrians.

Haslemere Industrial site / Wandle Terrace

This development by First Base to build a new street with 6 storey blocks of flats to the railway line and a mixture of flats and houses backing on to Haslemere Avenue received planning permission in June 2017, despite very strong objections from local residents as it is out of keeping with the residential area of 1930's housing. In August this year the site was acquired by Earlsriver Ltd which has instructed Canbury Construction to develop the site. They are currently carrying out site enabling works and clearing up the fly tipping and the installation of fencing and hoarding to facilitate demolition works of the buildings, planned for early next year, which will follow with ground preparation works and construction of the new buildings and access road to Rufus Business Park. They plan to complete the development by end of 2020.

The Woodman Public House

There are 2 developments here by Goldcrest; the first is the public house itself, which has already seen the demolition of the conservatory and rear extension taking the pub back to its original size. The outside of the building has been decorated and a new wall erected to the front of the building. A tenant has been found to run the pub and it is hoped that it will reopen shortly after it has been fully refurbished. The second application applies to the carpark and gardens where planning permission to build 7 houses and a 3-storey block of 11 one bedroom flats has been approved. Goldcrest do not carry out construction work. Rather they obtain planning permission and then sell on. Both sites were up for auction in September. However, neither of them sold.

208 Durnsford Road

This is another development by Goldcrest where planning permission has been received to build a 4-storey block of 10 flats with the ground floor for commercial use. This also went up for auction in September, but remains unsold.

Continued on Page 36

z | group

Accountants | Solicitors | Architects

**Z group was established with one key concept in mind –
seeing things from the clients' perspective.**

Our expert integrated team of Chartered Architects, Solicitors
and Tax Professionals is where we can make the difference,
ensuring you make a more informed decision.

We offer comprehensive turnkey solutions for developers and
investors saving you time and money.



Give us a call to find out more

020 8944 1180 / info@zgrp.co.uk / [@TheZgroup](https://www.thezgroup.co.uk)

ZGRP Limited

Ibex House 162-164 Arthur Road
Wimbledon SW19 8AQ



Wimbledon Park Mosque

An application has been submitted to extend the 1st floor with car parking underneath. The WPRA wrote to the Council objecting to this proposed development due to its proximity to nearby houses and its bulk which would create a dominant presence in the area.

Glasshouse Arthur Road

An application has been submitted to part extend the 3rd and 4th floors to provide a 3 bedroom apartment. This application has received a number of objections.

Cappagh seeks cement handling permit

Cappagh has applied for a Part B environmental permit to regularise its operations in Waterside Way, where a cement dust pollution incident was captured on video in June. Public comments on the application, to handle and store dry cement using a silo, can be made until December 20, 2018. Details are available on the Merton Council website (search for: part B environmental permits). See also the haydonsroadnorthcommunity.wordpress.com blogsite.

This application is separate from the recent concrete batching plant planning application, which was refused earlier this year after it emerged that inaccurate traffic and environmental reports had been submitted. That refusal will be appealed, we understand.

It is an offence punishable by fine/imprisonment to operate a Part B process, such as loading/unloading cement, without a permit. The Health and Safety Executive, among others, is aware that the company has already been carrying out cement storage/loading operations on its land without the required Part B permit. Merton Council has chosen not to take action over the incident in June, when a large cloud of dust was emitted from Cappagh's site alongside the Wandle Trail. In deciding whether to grant a permit to Cappagh, the Council must follow Defra guidance on matters including "operator competence".

Zebra Crossing on Durnsford Road

In July 2017 an application was made to install a zebra crossing outside Sainsbury's. This area is becoming ever more dangerous for pedestrians trying to cross Durnsford Road, particularly when Sainsbury's lorries are parked on the double yellow lines, when making deliveries, as you are unable to see the on-coming traffic. There have apparently been objections to this crossing but the Council refuses to tell us who by or on what basis they are objecting. The loss of maybe 2 parking spaces is a small price to pay for the safety of pedestrians. We will continue to pursue this issue with the Council.

Stadium Development

See the Chairman's report for the latest developments on this project.

Pam Healy



Services include:

- Domestic
- Commercial
- Telephones
- Rewires
- Testing

*Also available for
evening appointments.*

E O'Driscoll
Approved Electrician

Email-eddieodriscoll18@hotmail.com

Mobile-0797 080 7249

Landline:020 8785 4610

The Wimbledon Park Residents' Association

Membership Secretary required.

Main requirements:

- **Enthusiasm**
- **Help promote the Association**
- **Manage the membership database (Excel)**
- **Comfortable with computers and email**
- **Lead on the collection of subscriptions**
- **Attend monthly committee meetings (as far as possible)**

Contact the Chairman, Iain Simpson at

wimbledonparkra@gmail.com

We are an equal opportunity employer. Nobody gets paid!

Crime Statistics

(supplied by Ivan Scott)

Wimbledon Park Ward Crime Statistics															
August 2018	2017					2018							12 Month Total	Average per month	% of Total
	Se p	O ct	No v	De c	Ja n	Fe b	Ma r	Ap r	Ma y	J u n	J u l	Au g			
Violence and Sexual Offences	28	17	13	12	13	6	16	10	15	15	14	12	171	14	19
Vehicle Crime	9	4	11	11	14	14	8	15	10	13	5	10	134	11	15
Other Theft	5	2	11	13	11	9	12	4	14	22	7	13	133	11	15
Burglary	4	5	10	14	8	13	8	6	12	18	16	5	119	10	13
Anti-Social Behaviour	11	4	13	7	11	2	10	6	4	6	9	17	110	9	12
Criminal Damage and Arson	8	5	3	4	2	8	2	5	8	8	6	5	64	5	7
Public Order	4	1	5	3	5	1	10	6	5	3	4	2	59	5	6
Bicycle Theft	5	0	0	3	3	5	3	1	2	6	5	3	36	3	4
Shoplifting	1	2	2	2	5	6	3	7	3	0	2	2	35	3	4
Drugs	1	2	1	1	1	0	1	1	2	2	2	0	14	1	2
Theft from the Person	0	1	4	0	0	1	1	0	4	1	2	0	14	1	2
Robbery	0	0	0	0	0	1	4	2	1	0	2	0	10	1	1
Other Crime	2	1	0	0	1	0	1	0	0	1	0	0	6	1	1
Possession of Weapons	0	1	0	1	0	0	0	1	0	0	0	0	3	0	0
Total	78	5	73	71	74	66	79	64	80	95	74	69	908	76	100



Carmela Guida's School of Ballet

RAD BALLET
MODERN/CONTEMPORARY
BK BALLET FLOOR BARRE
ADULT CLASSES/POINTE WORKOUT
PRIVATE TUITION
...IN WIMBLEDON PARK AND EAST PUTNEY

1to1 PILATES STUDIO/EQUIPMENT SESSIONS
...IN PUTNEY HEATH

To arrange a trial class visit:

www.carmelaguidaballet.co.uk

Oakley Locksmiths Ltd

We are a family run business based in Southfields since 1987. Our company offers free no obligation quotations on all types of security for both the residential and commercial markets. Our fully trained locksmiths supply and fit all makes of locks and key cutting in our shop starts from £2.50.

81 Replingham Road

Southfields, SW18 5LU

020-8871-1238

www.oakleylocksmiths.co.uk

DECORATOR HANDYMAN

**Established in Southfields since 2002,
I offer a complete painting, decorating
and handyman service to local
residents at reasonable prices.
Excellent references available.**

**To discuss your requirements
and to arrange a free quotation
without obligation,
please call Nigel Plumbe:**

(H) 020 8871 9687

(M) 07939 310292

W.P.R.A. Committee 2018/2019

Spike Clarke	Home Park Road
Ingrid Dickenson	Havelock Road
Beate Eberhardt	Crescent Garden
Pamela Healy - Advertising/Planning	Brooklands Ave
Mamoona Jahangir	Durnsford Road
Paresh Modasia	Home Park Road
Michael Tyler - Planning	Cromwell Road
Iain Simpson - Chairman & Newsletter Editor	Home Park Road
Peter West - Planning	Cromwell Road
Cllr Janice Howard, ex officio	Dora Road
Cllr Oonagh Moulton, ex officio	Melrose Avenue
Cllr Ed Gretton, ex Officio	Braemar Avenue

Adam's Plumbing

Southfields, SW18

With 25 year's experience, working in the Southfields area, I undertake all household plumbing and heating jobs.

For a prompt call out, or to arrange a free estimate, please contact me on:

07956 324460
adams_plumbing@hotmail.co.uk

Advertising in this magazine

Contact Pamela Healy
pam.2015@outlook.com

VOLUNTEERS NEEDED TO DELIVER OUR NEWSLETTER IN

**Durnsford Road and Gresham Way,
Durnsford Avenue and Strathmore Road.**

If you can spare an hour or so three times a year, we would be very grateful. We will deliver the newsletters to your door for distribution.

If you would like to help please contact Pamela Healy at

pam.2015@outlook.com

Index of Advertisers

Accounting	ABK Accountancy and Tax Services	7
Ballet	Siegeris School of Dance	22 & 24
	Carmela Guida School of Ballet	39
Café	Arthur's Café	23
Carpenter	Daniel Smith	13
Creative Workshops	Workshop 305	17
Electrician	Eddie Driscoll	37
Engineering	Naismith Engineering	19
Estate Agents	Burlington	43
	Robert Holmes	9
Gifts and Cards	Chalk	13
Locksmiths	Oakley Locksmiths Ltd	39
Legal and Financial	Z Group	35
Minicab	A1 Cars	21
Painting & Decoration	Nigel Plumbe	39
Plumbing	Adam's Plumbing	41
Restaurants	Chicken Cottage	44
Schools	Little Learners	15
Solicitors	McGlennons	21
Stain Glass & Leaded lights	Coriander	11
Windows	SPS Timber Windows	2

Burlington

Burlington Residential Estate Agents



**Wishing you a Merry Christmas and a
Happy New Year for 2019**

***If one of your New Year's resolutions is to sell
or rent out your property:
Contact us for a free lettings or sales valuation***

Tel: 020 8944 9898

Burlington Residential is your established, local
independent estate agent. Find us opposite
Wimbledon Park station.



Call us today



Zoopla.co.uk

www.burlingtonresidential.co.uk

141 Arthur Road, Wimbledon Park, SW19 8AB

WISHING YOU ALL
MERRY CHRISTMAS
&
HAPPY NEW YEAR



...it's all about the taste!



OPEN 12NOON TO 11PM MON-SUN
393 DURNSFORD ROAD | WIMBLEDON
LONDON SW19 8EE | 0208 947 2179
WWW.CHICKENCOTTAGE.COM

Uber
Eats