



Wimbledon Park Residents' Association



**Winter
2020**

wimbledonpark.com

sps timber windows



■ box sash windows ■ casement windows ■ doors ■ plantation shutters



- Award-winning sps timber windows is celebrating its 22nd year as South West London's most established specialist in the design, manufacture, installation and finishing of premium quality, energy-efficient, bespoke timber windows and doors, including
- Box sash windows, casement windows, front doors, French doors, folding sliding doors.
- Custom made to "A" rated specifications in Accoya® wood.
- Accurate representation of period designs and features.
- Double-glazed and draught proofed.
- Contact us for a quotation.
- **Wimbledon Park Residents' Association Christmas Offer:**
Receive up to £150 John Lewis Vouchers (T&C's apply).
Quote offer code WPR.A.

Showroom 61 Revelstoke Road, Wimbledon Park, SW18 5NL

www.sps timber windows.co.uk

info@spstimmerwindows.co.uk

020 8879 3443



Christmas edition 2020

Contents

Chairman's Report	4 & 5
Update from Stephen Hammond MP	6
Update from Councillors	8, 9 & 10
Table tennis in the park	12
Ministers cut redtape for 5G masts	14 & 15
Update from Friends of Wimbledon Park	16,17,18 & 19
Durnsford Recreation Ground	20 & 21
My close neighbourhood	22 & 24
The South London Waste Plan	26 & 27
Join the WPRA	28 & 29
Wimbledon Society Museum refurbishment	30 & 31
Wimbledon Park Community Trust	32 & 33
Crime Figures	34
Crime Statistics (Ivan Scott)	36
St Luke's Church Advent activities	38
Committee List	40
Advertisers Index	42

**All advertising enquiries to: Pamela Healy
Email: pam.2015@outlook.com**

**Editorial help needed. Contact Iain Simpson on 020 8947 1301
email: iainsimpson@imi-consulting.com**

Chairman's Report

It feels like a whole year has passed by since my last report in the Easter edition. I am afraid the lack of advertising, upon which we rely, did not make the Autumn edition possible. However, the response to this edition has been much more encouraging.

So much has happened in the interim with the development of Covid-19 to interrupt every aspect of our lives; particularly impacting the economy, people's jobs, family activity and holidays. Here we are in Lockdown 2 waiting patiently for release on good behaviour on the 2nd December. By the time you get this newsletter, I hope that will be the case. The prospects for an effective vaccine look very encouraging. Fingers crossed!

AGM

Usually by this time of year we have had our AGM. Unfortunately, due to the imposition of Government restrictions, it has not been possible. This was discussed at the last committee meeting and we agreed that to try and hold a Zoom meeting would be overly complicated so we will wait until more favourable circumstances allow. Until then the work goes on!

The latest accounts for the year ended March 2020 will shortly be available on our website www.wimbledonpark.com.

Durnsford Rec

You will see from the article on pages 20/21 that Pamela Healy has been busy and managed to secure a grant of £32,000 from the Council for improvements in Durnsford Recreation ground. These may take some time to implement but we look forward to enjoying the benefits in due course. This is a great personal initiative so well done Pamela.

Cllr Janice Howard

I caught up with Cllr Janice Howard recently and asked her about her sojourn as Mayor of Merton. As you may know, Janice was determined to raise as much money in the year as she could for two charities, Faith in Action and Macmillan. Despite the interference of Covid-19 which meant that the big fund raiser dinner at the All England Club did not take place, and several other activities, her efforts managed to raise very close to £84,000. This, she tells me, is a record amount for any Mayoral fundraising in Merton. I also understand that due to Covid extending

her term of office until September, she is now the longest serving Mayor as well. Well done Janice for a great personal effort.

Defibrillator

Shortly, a defibrillator will be installed on the outside wall of Wimbledon Park Hall in Arthur Road. This is being supplied by the Wimbledon Park Community Trust for the community.

Defibrillators are devices that restore a normal heartbeat by sending an electric pulse or shock to the heart. They are used to prevent or correct an arrhythmia, a heartbeat that is uneven, or that is too slow or too fast. Defibrillators can also restore the heart's beating if the heart suddenly stops. Modern defibrillators are very easy to use and when opened provide their own spoken instructions for the user. The defibrillator will be available to the public and is accessed by a code.

The Coop in Arthur Road has very kindly agreed to hold the code so that access will be available all the hours that the Coop is open.

The purchase of the defibrillator has been arranged through the charity 'London Hearts'. The main purpose of London Hearts is to help and support communities with the provision of heart defibrillators and to teach CPR/Defibrillator skills.

www.londonhearts.org. They say about themselves:

"We are the leading heart charity in England for placing defibrillators in communities and delivering CPR and Defibrillator training. There are more than 30,000 out of hospital cardiac arrests across the UK every year but less than one in ten people survive. The more Defibrillators that are accessible, and the more people trained in how to use them, the better the chance of survival for someone who suddenly collapses from a cardiac arrest.

We ensure that communities obtain the correct defibrillator equipment, i.e schools require a dual functionality defibrillator which can be used on both adults and children with just a flick of the switch. We also ensure storage cabinets meet the correct requirements, conforming to health and safety and electrical safety requirements."

In one way we hope that that the defibrillator will never be used but think that one should be available, should the need arise.

With best wishes for a Happy Christmas.

Update from Stephen Hammond MP

I am, once again, grateful for the opportunity to contribute to the Wimbledon Park Residents' Association newsletter. I would like to take this opportunity to wish you and your family a Merry Christmas and a Happy New Year.

This has been an exceptionally challenging year for us all. When the lockdown began in March, nobody could be sure how long this would last. Many of us hoped that it would be short lived, but very quickly we accepted that it would be many more months before things return fully to normal.

As I write this article in November, the country is about to be placed in 4 weeks of heightened restrictions, and I sincerely hope by the time this newsletter is distributed we are in a much better position as a country. Of course, as the situation is rapidly developing the information provided here may be superseded very quickly, so please do check the Government's website for the latest guidance: www.gov.uk/coronavirus

I also know the increase in restrictions and the continued worries over Coronavirus can lead to increased anxieties and difficulties. This is especially true for the elderly and vulnerable. Merton Voluntary Service Council have mobilised a volunteer taskforce to assist those in isolation. If you think you might need help, you can email help@mvsc.co.uk or call 020 8685 2272 between 10am–4pm, Mon–Fri.

The Wimbledon Guild are also helping people locally and offering volunteering opportunities; you can find out more about their work here: www.wimbledonguild.co.uk

This is also a difficult time for many financially. I am proud of the unprecedented package of financial assistance the Government have provided, which is keeping many businesses afloat until they can resume trading. Since March, I have also been making the case for improved support for those people and businesses most affected by the pandemic, in particular the events, hospitality and arts sectors. I will continue to support local businesses to ensure, as the country returns to normality, they will be in a

position to thrive.

Before the pandemic, we were fortunate in Wimbledon to have such a vibrant sense of community spirit, as demonstrated by groups such as the Wimbledon Park Residents' Association. Throughout this crisis we have seen this community spirit grow to meet the challenge, which has been extraordinary and inspiring to see. I have no doubt this will continue through these latest restrictions and beyond.

Finally, as ever, I stand ready to assist. I can be contacted on stephen.hammond.mp@parliament.uk on 0207 219 3401

Happy Christmas, and my best wishes for a prosperous and more normal 2021.

ABK

A.B.K. ACCOUNTANCY & TAX SERVICES

For All Your Accountancy, Taxation and Business needs

- Accounts
- Taxation
- Self-employed
- VAT Returns
- Lettings Accounts
- Wages -PAYE
- Partnership Accounts
- Tax advice

- Book Keeping Services
- Management Accounts
- Self- Assessment Tax Returns
- Limited Company Accounts
- Company Formation
- Sub-contractors C.I.S.
- Tax Refunds

All services at competitive rates

59 Ashen Grove, Wimbledon Park, London SW19 8BL

Tel: 020 8947 9931 – Fax: 020 8879 3412 – Mob: 07989770847

Email: abk.accountancy@btinternet.com Website – www.abk-accountancy.com

An update from your Wimbledon Park Councillors – Christmas 2020

A quick update from the three of us as your Ward Councillors.

We thank everyone in Wimbledon Park for the tremendous resilience you have all shown through the pandemic and for the help and support you have given to friends, family and community.

Neighbourhood CIL bid for Haydons Road Parade

First, some great news for the Parade of shops at the top end of Haydons Road by the Plough Lane crossroads - you may remember that Ward Councillors put together an ambitious bid for giving a much needed lift to the whole Parade. This was supported in particular by the Haydons Road North website and community group.



We have now secured a further £257,000 of funding to clean and restore the heritage brickwork and improve the Parade's shopfronts, providing uniform shop signage and new, quality awnings, which we hope will very much improve the appearance and general 'feel' of the Parade.

We currently are working with Council officers to ensure that the spec and tenders are carried out in January and February, which will allow the works to commence after Easter and hopefully finish in time for Christmas 2021.

In addition to the project to improve the shopfronts, we are also working to secure additional funding from the ongoing Stadium and Galliard Homes developments to improve the standard and design of the pavement and the street scene on the Parade, to plant trees and establish planters, again hopefully all to take place through 2021. We very much believe that what with the new Stadium and Galliard Homes developments, this is the time to focus the Council on improving the Parade and introducing as many trees and as much urban greening as possible in this area.

We will provide updates as this work progresses.

Our new pocket park - “Gap Road Gardens”



The works on the Gap Road pocket park continue. If you remember, Ward Councillors secured funding from central government (from Rishi Sunak when he was a minister at the Ministry of Housing, Communities and Local Government!), supported by a generous donation from the Wimbledon Park Community Trust.

There is a lot more work still to do: in particular, we are still waiting for works to be completed to restore the railings, install National Trust style benches, replant trees and replant the entire hedge, establish wild flower beds and plant wild iris and garlic under the trees. The idea is for some of the lawn to be allowed to grow longer with a ‘rewilded’ feel. There is also to be a ‘loggery’ – a habitat to encourage wildlife and insects.

The works have been delayed by the pandemic, but we hope that by spring 2021, we will finally see a fabulous pocket park for all to enjoy. The chosen name for our new pocket park is “Gap Road Gardens” and we believe it will provide much needed green space at a busy junction.

State of Wimbledon Park

As we all know, the Council’s management of many events in Wimbledon Park

has been disastrous. We have followed up robustly with the Council to ensure proper remedial works and regressing are carried out, which has finally happened over the last three months. Some of the restoration works are still continuing, a whole year after the 'Big Top' event! At our request, we are pleased to report that the Council has agreed never to repeat the disastrous 'Big Top' event from last year.

The Street Eats event in August, however, was a very good event in terms of quality and not adversely impacting our park, and we have made it clear to the Council that this is the type of event we are happy to allow in our park on occasion. We have also asked the Council to permanently ban barbeques from the park.

Wimbledon Park Tube Station lift

It took Ward Councillors several years of campaigning to persuade TFL to put in step free access in the form of the new lift at our Tube station. A special thank you to our local MP Stephen Hammond for his continuing pressure on TFL to finally finish the works - TFL suspended work for several months and we hope we will finally see the lift in operation soon.

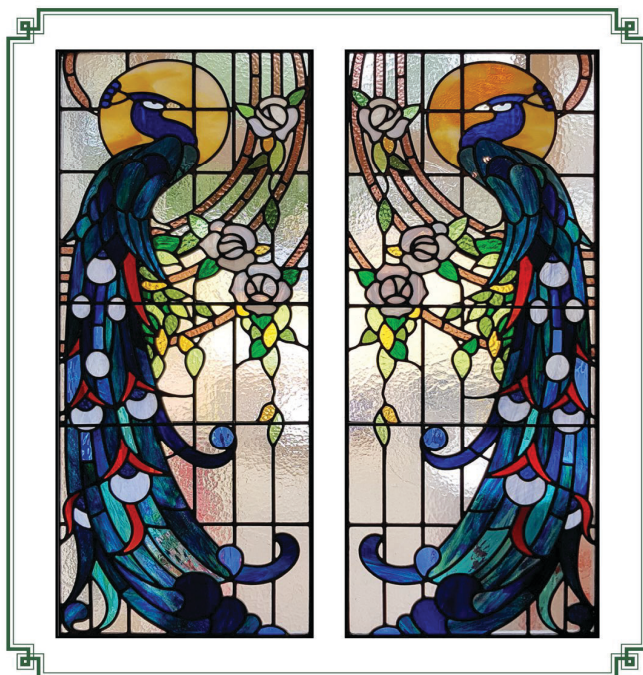


Finally we have been seeing a deterioration again in terms of the Council's street cleaning standards and in particular the services to empty the public litter bins. We have asked the Council to ensure they do more to manage the appointed contractors in line with the clear contractual standards our council tax is paying for.

We wish you and your families a safe and happy Christmas, and we look forward to what we all hope will prove to be a much better year in 2021.

Cllr Ed Gretton Cllr Janice Howard Cllr Oonagh Moulton

VICTORIAN, EDWARDIAN AND CUSTOM STAINED-GLASS



CORIANDER

TRADITIONAL STAINED GLASS AND LEADED LIGHTS



YOUR LOCAL STUDIO:

**27-29 Kingston Road
Wimbledon
SW19 1JX**

020 8947 7635 • info@corianderstainedglass.co.uk

Wimbledon Park PLUS – from screen to green

Wonderful news! Wimbledon Park now has its first table tennis table. Our thanks again to The Wimbledon Park Community Trust and Friends of Wimbledon Park for making this project become a reality.



Local landscaping firm Urban Oasis kindly installed the table in July, and since then it has been enjoyed by many from all generations. It certainly is a fantastic addition to our park.

Please come to the park to enjoy a free, socially distanced game. If you don't have your own bat, they are available to rent for £3 from the park café, which is redeemable against a treat after your match.

Many thanks

Lucy and Julie

Local mothers



DANIEL SMITH

CARPENTER AND SPECIALIST JOINER

Beautiful, bespoke carpentry including:

- Alcove Bookcases • Cupboards
- Wardrobes • Bookshelves
- Sash Windows • Doors
- Home Offices • Radiator Covers

Tel: 020 8874 5205 Mobile: 07950 251026,

E-mail: daniel-smith1@hotmail.co.uk

48 Lavenham Road Southfields London SW18 5HE



* Gifts *

* Cards *

* Jewellery *

* Toys *

Southfields' Aladdin's Cave!

Gifts, cards & wrap for everyone

Monday - Saturday 9:30 - 6:00

Sunday 10:30 - 4:30

41 Replingham Road, Southfields, SW18 5LT

www.chalkgifts.co.uk

020 8870 6125



'Ministers cut red tape for 5G masts'

Communities are expressing their reasoned opposition to masts; the response of the government is to just change process so that local people affected are simply by-passed. This shows contempt for constituents. Matt Warman, the Minister for Digital Infrastructure, is quoted in the article: "We are exploring how to bust any barriers holding back industry from speeding up the rollout." The barrier-busting task force was mentioned in 'Next Generation Mobile Technologies: An update to the 5G strategy for the UK' - 19 Dec 2017- DCMS policy paper. It was to target councils and local reps, now it seems it will also target people's voices.

This is yet another example of the ceding of power from the local grass-roots level into central government and powerful business interests. Now, more than ever, it is important to preserve the democratic rights of local people to have a say in what happens in their area. Reduction of local power has been going on for too long and it needs to be questioned. Councils are starting to resemble a hollow body, there to rubber-stamp instructions from above. If communities feel alienated from the places in which they live and work, we will have lost something very precious.

The industry-funded (Cellnex, Cornerstone, MBNL, Mobile UK) Speed Up Britain think tank quoted in the article wants "small changes" in the electronic communications code to "unlock billions of pounds". The small changes industry wants would be applied to a code already heavily weighted towards their interests. Dr David Drew MP points out: "The electronic communications code has granted virtually unlimited powers to companies to construct, maintain or develop the current infrastructure without any planning permission. It is all done under delegated responsibility, which means that the general public do not even know what is going on, because normally these things are not publicised. There is little recourse unless the public takes court action to stop it, but the means of doing so are limited. Even a private landowner has little authority to stop it. The matter needs to be looked into and properly investigated."

The national planning framework sets out the valid grounds for objection to these

masts. It is so restrictive it forces people and the council to operate in a false reality where masts are to be viewed simply as non-emitting metal structures with no social, environmental, privacy and health impacts.

These are some of the key questions that interested residents might pose to their MP or indeed Ministers responsible. The more people challenge the status quo, the more politicians will pay attention.

- The use of electronics communications code in relation to 5G masts.
- Do you think the national planning framework in relation to phone/data masts 4G and 5G and small cell transmitters being put in our neighbourhoods (like the one in Havelock Road - there are many others which have recently been installed) favours the telcos excessively at the expense of local communities and democracy or not?
- Even if you are reluctant to enter the 5G debate, will you stand up to protect the voices of those who are engaged in it locally?
- Do you agree the scenario in the paragraph below is akin to how communities resisting 5G masts are being treated? If not, please explain why.

In the past, asbestos was deemed safe. However, people who researched it were not convinced and resisted the placement of unsightly asbestos storage/waste depots. There has been no discussion covering whether the precautionary principle applies, the social costs or alternative solutions. In fact, government brings in laws/regulations to make this discussion invalid.

Despite this, local communities are found to slow down the national rollout of depots, but instead of listening to what people are saying, the government and asbestos industry work together to by-pass them altogether. With concerns not being heard, the only avenue left to people is a prohibitively costly judicial review, like the one launched on 30/09/2020, with others potentially following.

Asif Naqvi

5GinMerton.com

FOWP update-November 2020

It is good to be back! Wimbledon Park, like all the UK's gardens, parks and woodlands, has probably played a big part in helping us all through COVID-19 times. Recent reports (Gov. UK 'The People and Nature survey for England' 2020) found that 9 in 10 adults in England said that being in nature makes them happy. Many also reported spending more time in nature than before COVID-19 struck with health and wellbeing being amongst the main reasons for getting outside. We are extremely fortunate indeed to have such a lovely local park on our doorstep.

So, what has been happening?!

Damage to the Great Field

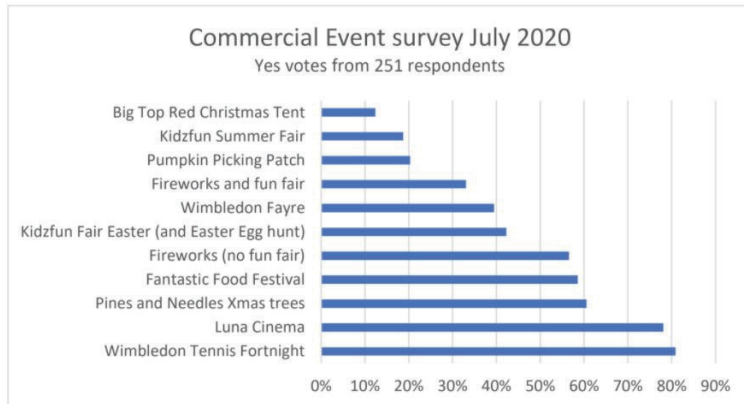
There was much concern about the state of the Great Field particularly around January. It had been left scarred and churned over after the Big Christmas Top was taken down. After much lobbying, work was started in May to repair this damage. We were told that the reparation was funded by the owners of the commercial enterprises. The grass has come back from the scarred landscape. It has been looking in 'fine form' - lush and verdant. However, as Dave Dawson, our ecological adviser pointed out in one of his blogs, 'the same cannot be said of the Pines and Needles site, which is green with two annual weeds. Predominant there is knotweed and standing slightly taller are scattered plants of Pineapple weed. Whilst providing good food for birds, these will die back in the Autumn, leaving bare ground.' It is a bit late to be reseeding the Pines and Needles site as they are now back in situ! Merton Council have told us that 'upon them (Pines and Needles) vacating the site (probably around the New Year) we (Merton Council) will inspect and assess what ground remediation is required and the anticipated timescale to undertake that exercise'. This sounds hopeful.

A great team effort!

Back in February we, in conjunction with volunteers and the Merton Tree Wardens, planted more trees in the park. These included dog rose, hawthorn, hazel, wild cherry, lime and oak. These were planted in the gaps beside the tennis courts. We had a good community turnout. Not only will this leave a lasting legacy, but it will lock in more carbon and enhance both the landscape and wildlife habitats.

Survey about Commercial Activities in the park

In July we held our own survey about commercial activities in the park. We asked people to vote on the activities they would like to see continue in the park. We had 251 responses, and these were the outcomes. Any surprises?!



In August, Merton Council set up their own survey about parks and green spaces throughout the borough. We await the outcome of this survey as it has, apparently, not yet been finalised.

Table tennis comes to Wimbledon Park!

In August, after many months of planning and campaigning, we were happy to announce that a table tennis table had been installed next to the volleyball courts in Wimbledon Park! Local mums, Lucy Kilborn and Julie Watts worked closely with the Friends of Wimbledon Park to gain permission from Merton Council to have the table installed; Wimbledon Park Community Trust kindly funded it and Greg, a local Dad who owns local landscaping business, [Urban Oasis Ltd.](#) and his team installed it free of charge! It was a real community effort! The table tennis has got off to a great start with people. It's what we wanted - a community activity which can be enjoyed by everyone.



The story behind the bones!

Some bones were found whilst setting up the table tennis table and this generated some interest. The bones were big! Even the police, thought they might be human ones until forensics tested them. It appears that bones and pottery were also found nearby when the volleyball courts were built in 2012. Our ecologist and local historian, Dave Dawson, says that there is existing documentation suggesting that the area had ceased being a deer park before Capability Brown's landscaping. The park pastures were mainly for sheep grazing with some dairy. So, there's a possibility these remains are older than late 18th century and indicative of occupation then. Given that both bones and pottery can be readily dated these could be investigated further. Of course, this is speculative but fascinating none the less!



Volunteer Vacancy - Membership Secretary

The FOWP are looking for a volunteer Membership Secretary! Might you be interested in this role? If so, you would be joining a small, friendly and dedicated group of people who are keen to develop a vision to enhance Wimbledon Park for the benefit of both present and future generations.

The requirements are to:

- maintain the membership database (following familiarisation);
- request subscriptions from members and liaise with the treasurer;
- circulate agendas, minutes (normally 1 annual and 4 general meetings) and circulars to the FOWP Forum and members;
- keep the FOWP website updated (technical advice available).

Curious to know more? If so, we would love to hear from you! To have a chat and arrange to meet, please get in touch – contact Nick Steiner, Chair of the FOWP at n.steiner@btinternet.com

And finally - as Autumn is here!

“Delicious autumn! My very soul is wedded to it, and if I were a bird, I would fly about the earth seeking successive autumns.” — George Eliot

Do follow us on our Facebook page and on Twitter.

Friends of Wimbledon Park Facebook

Twitter is

FriendsoWP@FoWimbledonPark

Website

Friendsofwimbledonpark.org.uk

Amelia Obertelli-Moriarty



DURNSFORD RECREATION GROUND

During the first lockdown and throughout the summer the Rec was well used by walkers, joggers, dog walkers, picnickers, family groups and people meeting up with friends - at a social distance, maybe over a glass of wine or two! I was pleased to see that most people used the bins or took their rubbish home, so keeping the Rec looking clean and tidy, unlike Wimbledon Park where litter and food covered the park most days.

There was, however, quite a bit of damage done to the flower bed where children were using it as a playground. We have lost a number of shrubs and others have been damaged because of this. The council are not responsible for the flower bed as it was originally planted by the WPRA to celebrate the Queen's Golden Jubilee, and we are therefore responsible for the upkeep and the cost of providing plants; some of those lost and damaged were only planted last year. We hope to replenish this area over the winter months should funds allow. All I ask is that can parents please keep their children out of the flower bed in future. Many thanks.

Together with local resident Kim Harper, we planted over 300 daffodil bulbs, by the entrance from Wellington Road and in the two flower beds; hopefully there should be a wonderful display in the spring and for many years to come.

Improvements to the Rec

When a new development is being built, the developer has to pay the council what is known as a Community Infrastructure Levy (CIL). Some of the monies raised from this levy go to the Neighbourhood Fund and each year the council accepts bids for use of this money to fund local projects. This year I applied to make improvements to the Rec on the basis that new communities are being developed in the area. The old Haslemere industrial estate, now known as Earlsfield Terrace, will have 130 flats, many are family sized properties, and 12A Ravensbury Terrace 25 flats. There will be no outdoor space other than balconies and a pocket park by the Wandle. The Rufus Business Centre has just been sold for development, which could have in excess of 50 flats. The nearest green

McGLENNONS Solicitors

Providing legal services in Wimbledon Park since 1995. We specialise in:

Wills & Lasting Powers of Attorney

Probate & Estate Administration

Residential Conveyancing

Leasehold Extensions & Freehold Enfranchisement

Landlord & Tenant

Dispute Resolution & Family Law

No charge – 20 minute initial consultation



Conveyancing
Quality



William Essex – Principal
157 Arthur Road London SW19 8AD

Tony Brown
Tel: 020 8946 6015

Barbara Morris
www.mcglennons.co.uk

space for all these new developments will be the Rec. The bid had to show that it would meet some of the 8 thematic priorities. I chose to meet 3 of these:

- Reducing carbon emissions and tackling climate change
- Protecting and enhancing the local environment
- Tackling diabetes and creating a healthy place

I successfully secured £32k for improvements to the Rec. This includes 2 new benches and the planting of around 10 semi mature trees, meeting criteria 1 & 2, and outdoor exercise equipment for adults meeting criteria 3.

Unfortunately, given the current Covid situation, I do not have a timescale for when these improvements will take place, but hopefully it will not be too long.

Pamela Healy

MY CLOSE NEIGHBOURHOOD: NORMANTON AVENUE

We have all experienced testing times this year due to the complications brought on us by the pandemic, and of course we need to be resilient to see the current situation through.

Our neighbourhood has conveyed a great sense of community, helping us through these difficult times, both in terms of the centrally organised initiatives taken by our local representatives and authorities, as well as those that have developed almost spontaneously in our streets, roads and avenues.

As a case in point, I wish to take Normanton Avenue, a road in the Grid where I reside.

What is Normanton Avenue? A road with a little gradient running north-south, developed at the beginning of last century. Just one block long, with some 90 Edwardian terraced houses, probably not the most accomplished examples of the architectural character of the Grid, there are other streets with greater variety of design and detailing.

A little bend at the Revelstoke end of the road, gives some mystery as to what will come next when approaching from the north. Then in the long vista towards the south and over the ridge of the houses on Ashen Grove that provide the physical limit to the street space, you can discover the roof of Saint Luke's Church and skyline beyond.





Arthur's Café

Open Monday to Saturday inclusive
8.00am to 6.00pm

Next to Wimbledon Park Hall at 170 Arthur Road.

Great Food – Great Coffee – Great Service

Catering available for all kinds of parties

Call Yasmin on 07958 598823

The street scene, its width combined with the right height of the terraces on either side, creates this space that we call Normanton Avenue, with its trees, kerbs, pavement and road textures.

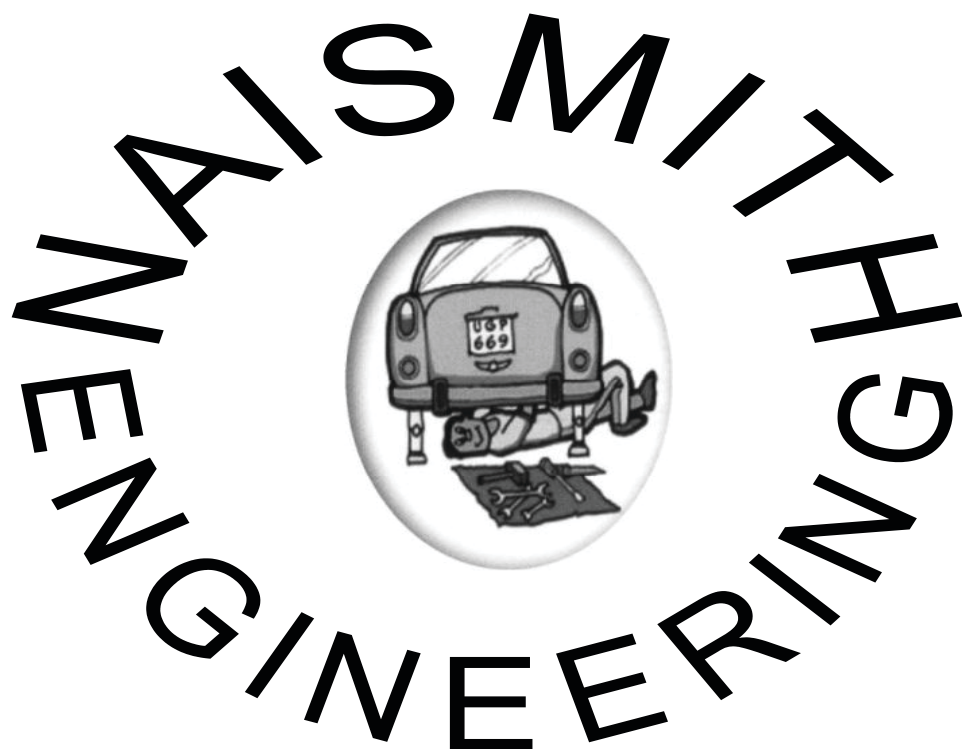
It is in this space where the Normanton Avenue neighbourhood community thrives. It is here where the neighbours have helped and assisted each other throughout the crisis. It is here where the people and the built environment together have created this sense of belonging, inherent to the character and grain of the Wimbledon Park area.



This character will certainly prevail beyond the current crisis, and we ask ourselves what the future holds for roads like Normanton Avenue? Will it be the case that, not too long in the future, the street as a whole could be re-designed as a friendlier share space for children to play freely, with less cars parked around, with better tree planting and landscaping, with less hard surfaces?

We hope that once we overcome the present difficulties posed by the pandemic, our neighbourhood will become even better still!

Mario L Avendano, RIBA
November 2020



Serving Wimbledon Park for the past forty years

5%
Discount
when you
mention this
ad

- Car Repairs & Servicing
- M.O.T. Preparations
- Complete Engine Overhaul
- Vehicle Collection & Delivery Available

020 8947 1808

NAISMITH

ENGINEERING LTD

176 Arthur Road

Wimbledon Park SW19 8AQ

020 8947 1808 020 8947 3352

YOUR LOCAL

GARAGE

The South London Waste Plan 2021-36

In recent years, local residents will have become aware of large numbers of lorries carrying waste on our local roads creating traffic congestion and increased air pollution. Most of these lorries are carrying waste to Weir Road in the Durnsford Industrial Estate. The sites where waste could be processed in Merton, Croydon, Kingston and Sutton were determined in the South London Waste Plan 2012. Amongst other sites in these four boroughs it selected Weir Road as being suitable for waste processing and it was as a result of this decision that we have so many waste lorries on our local roads. The South London Waste Plan 2012 also proposed Waterside Way as another site for waste processing.

The waste processing sites in Weir Road have been allowed to develop in a way that is unchecked and no attempt has been made to quantify the increased traffic and air pollution, at least we have not been able to find any such attempt. In the original application for one of the sites, the planning officer noted that “the proposal has the potential to adversely impact on local air quality due to vehicle numbers”, but despite this Merton Council did not require any realistic assessment of the air pollution that would be generated on the surrounding roads.

There is now a new waste plan, the South London Waste Plan 2021-36, which determines where in the same four boroughs waste will be processed until 2036. This document aspires to process waste in such a way as to not lead to poor air quality. This is to be expected as about ten thousand people die prematurely each year in London due to air pollution or, put another way, one in eight people in Merton will die due to air pollution. UK-wide this number of deaths is about the same as the number of people who have died of Covid-19 so far. Unfortunately, the method the South London Waste Plan 2021-36 used to assess the consequences of waste management on air quality was deeply flawed. Rather than assess the air pollution in the vicinity of where the waste is being processed, it considers the effects on often distant places called air focus areas, which are not all subject to excessive air pollution and are often not significantly affected by the waste sites being assessed.

These problems are well illustrated by the waste being processed on Weir Road in the Durnsford Industrial Estate. The South London Waste Plan 2021-36 gives a

favourable grade to air pollution created from these sites as the effects will not be felt in the nearest air focus area which is essentially The Broadway in Wimbledon! As a result, the South London Waste Plan 2021-36 concludes that the waste processing in Weir Road poses no problems and it can even be increased in future years. Local residents who experience the excessive air pollution, which exceeds EU limits, and the traffic congestion, will disagree with this conclusion. Furthermore, according to the South London Waste Plan 2021-36, any future application does not need to consider the increased air pollution as an important factor.

The Wimbledon Park Residents Association has objected to the South London Waste Plan 2021-36, and these objections will be heard when it will be presented to the government inspector for approval. We propose that the air pollution and traffic generated by waste disposal should be properly assessed and where this is found to lead to unacceptable levels of air pollution and traffic congestion, restrictions should be placed on the amount of waste being processed on the corresponding sites. We hope that the inspector, and Merton Council, will listen to our concerns so that we can begin to address the problem on our local roads.

Peter West

Tectonics half page

Why should I support the Residents' Association?

There has been a Residents' Association in Wimbledon Park since 1906.

It provides a forum for discussing important local issues and a platform for action.

Since its inception, the Residents' Association has helped hundreds, probably thousands of local residents, irrespective of religion, race or creed who have turned to the committee for guidance and support.

We regularly check local planning applications and have been very successful in opposing unsuitable developments. We promote planting and improvements in local parks and green areas. We work with the local police to help fight crime in your street and publish the crime statistics in our newsletter.

We led the initiative to redevelop Wimbledon Park Hall in Arthur Road so that once again we have our own community centre and community Café. We have put on fairs and shows in the past and supported numerous local campaigns, individuals and families faced with tragedy.

The Residents' Association has given the Wimbledon Park Community a solid and respected voice when dealing with Merton Council. An individual can achieve only so much, but as a team we can and do achieve so much more.

This area is growing and improving all the time. We are happy to put in time and effort on your behalf. But we cannot function without funds.

We need you to support your local Residents' Association ideally for 3 years, which is only £12. Twelve pounds for a 3 year period will help us pay for printing and stationery to publish this newsletter, computer and IT software to run the website, materials and equipment to keep the flowerboxes blooming in Arthur Road and other improvements.

Please take a moment to fill in the very brief form opposite.

We regret that unless an email address is supplied, we are unable to acknowledge receipt.

If you are already a member but are not sure of your current status, email wimbledonparkra@gmail.com and we will check it for you.

Thanks in advance for your support. It is hugely appreciated.

Iain Simpson

Chairman

To Join the Wimbledon Park Residents' Association

Please complete this form and return it to us with your payment:

Name _____

Address _____

Post Code _____

Email*** _____

SUBSCRIPTION RATES

1 Year.....£5.00

3 Years.....£12.00

Donation.....£ _____

Payment Options:

By cheque - please make cheques payable to:

Wimbledon Park Residents' Association

Post to: WPRA, 56, Home Park Road, SW19 7HN

or

drop your subscription through the door of the Chairman, Iain Simpson, at 56 Home Park Road.

Email* If you would like to be included on an e-mail list for crime alerts, WPRA updates and information on other important local issues, please tick here**

☐

Please date...../...../.....

Refurbishment of the Museum of Wimbledon

The Wimbledon Society's Museum first opened its doors to the public in a room above the Wimbledon Village Club, on the corner of the Ridgway and Lingfield Road, in 1916. Since the centenary of the museum, in 2016, we have been working towards a major refurbishment. The present displays date from the 1990s. They won prizes in their day, but are in need of a makeover. We had been planning to close the museum for this purpose from March 2021. As a result of the uncertainties surrounding the Covid-19 pandemic, we decided not to try and reopen the museum this autumn, but rather to make an early start on this exciting project.

We have had a wonderful stroke of good fortune as we start out, with the recruitment of our Project Lead, Jane Allen. Jane was in charge of heritage at Sutton Council. She was responsible for the stunning Whitehall Historic House project in Cheam, and the creation of the Honeywood Museum in Carshalton. Having very recently retired, she agreed to take on this role as a volunteer.

We have begun the process of recruiting a professional project manager, and a designer, and we hope that successful candidates for both roles will be approved by the Wimbledon Society Board, and in post, early in the New Year. Meanwhile, our curator Dr Pamela, and her curatorial and conservation team, are preparing for the huge task of clearing all the objects out of the museum and safely into storage, which will hopefully be done by the end of December.

In January we will begin to plan our new displays. We want the new museum to take inspiration from our wonderful collections, to look at them in new ways, and to find new stories to tell through them. We want to represent the histories, and lives, of everyone who lives in Wimbledon.

As well as fresh exhibits, we want to create a new space for activities, which we hope will attract families and young people. We hope the new museum will be an exciting and vibrant place. Our aspiration is to create a space a bit like the Reading Room at the Wellcome Centre, with fascinating exhibits in a welcoming, accessible and inspiring environment.

We estimate that the cost of the refurbishment will be about £150,000. The

Wimbledon Society has provided £89,000, including £4,000 raised by last year's Dinner Dance. We have also received a donation from the Wimbledon Foundation. A further Fundraising Campaign will be launched in 2021. If you would like to find out more about the project, have a look at the special page on the Museum website, or follow us on Instagram. We hope that when we reopen, in 2022, it will be to post pandemic world!

Best wishes for Christmas

Jacqueline Laurence, Museum Chairman.

www.wimbledonsociety.org.uk

THE
WIMBLEDON MUSEUM
of the JOHN EVELYN CLUB

Is now installed in the Reading Room of the Village Club, and the entrance to it is by the door in the Lingfield Road only.

Members of the John Evelyn Club with their friends are admitted free during all hours when the Reading Room is open, other visitors are admitted between the hours of 11 a.m. and 4 p.m., on the introduction of any Member of the John Evelyn Club, or on application to the Hall-keeper.

All Visitors are requested to enter their names and addresses in the Visitors' Book.

The Secretary to the Museum Committee acts as Curator and attends on SATURDAYS from 2.30 to 4.30 p.m. Visitors who wish to examine objects not placed on exhibition should apply to the Curator during that time.

Communications intended for the Museum Committee should be addressed to its Secretary, at the Lecture Hall.

November, 1917.
Lecture Hall,
Wimbledon.

MARGARET GRANT,
Secretary to the Museum Committee.
E. CLAPHAM,
Hon. Secretary to the Village Club.

The Wimbledon Park Community Trust

The Wimbledon Park Community Trust was incorporated in October 2013 and subsequently registered as a charity.

The objects of the charity are:

‘The promotion of the benefits of the inhabitants of Wimbledon Park and the neighbourhood thereof (hereinafter called the area of benefit) without distinction, by the advancement of education and the provision of facilities in the interests of social welfare for recreation and leisure time occupation, with the object of improving the conditions of life for the said inhabitants.’

The Trust has a lease (99 years from 2013) from The London Borough of Merton, on the space known as Wimbledon Park Hall including the adjoining Arthur’s Café at 170 Arthur Road.

The main income of the Trust is derived from renting the hall and café.

We would like to encourage local residents to contact us if they feel they can identify a person, organisation or project that would benefit from our support. It can either be a project that would benefit the local area or an organisation that is involved in work that would of benefit to residents in the local area. We are particularly interested in supporting an apprentice who lives in the local area.

General Guidelines:

- The total limit of awards will be £10,000 for the current financial year.**
- The maximum grant size that can be applied for is £5,000.**
- The minimum grant size that can be applied for is £500, except in exceptional circumstances.**
- The Trustees will have total discretion on awarding grants.**
- All applications must give proper detail of the intended use of the grant money and what the ultimate benefit/outcome will, or is expected to, be.**
- No grants will be given for general revenue purposes; only for specific or capital spending projects.**

Applications can be made at any time.

Please send them in writing to:

Wimbledon Park Community Trust,

56 Home Park Road, SW19 7HN.

All applications will be acknowledged.

The latest available accounts for the charity can be found at

www.wimbledonpark.com

Company No. 08727642

Registered Charity No. 1156930



Wimbledon Park	Theft From M/V	GORDONDALE ROAD	Suspect has stolen golf shoes from the victim's vehicle	30/09/2020 22:30:00	01/10/2020 07:30:00
Wimbledon Park	Burglary - Residential	DURNSFORD ROAD	Victim reports that a rock was thrown through his window whilst he was out.	01/10/2020 22:30:00	02/10/2020 13:30:00
Wimbledon Park	Personal Property	HASLEMERE AVENUE	Victim was robbed of his mobile phone whilst walking to his mum's address. Suspects stated 'hand over the phone or I will shank you' no knife seen.	05/10/2020 22:50:00	
Wimbledon Park	Burglary - Residential	ARTHUR ROAD	Victim alleging her pedal cycle has been stolen from a small wooden shed in the front garden that was not locked and undamaged	18/10/2020 18:00:00	19/10/2020 07:00:00
Wimbledon Park	Theft/Taking of Pedal Cycles	MOUNT ROAD	Theft of pedal cycle from outside property-chained to railing	01/10/2020 08:00:00	01/10/2020 21:55:00
Wimbledon Park	Theft From M/V	CRESCENT GARDENS	Vehicle broken into and two coats stolen from inside	08/10/2020 22:00:00	09/10/2020 07:30:00
Wimbledon Park	Theft From M/V	STUART ROAD	Victim reporting theft of his tyres from his vehicle.	16/10/2020 05:30:00	16/10/2020 05:30:00
Wimbledon Park	Theft From M/V	GAP ROAD	By suspect by removing then taking the converter from the victims vehicle.	15/10/2020 20:00:00	16/10/2020 05:30:00

Learn, Laugh, Live with 850 others !



Merton

You are 55plus and you want to keep your brain active, learn new skills and discover new things, keep busy and meet new people. You want to do this with an active local organisation. We have nearly one hundred groups including arts & crafts, languages, science, current affairs, music, history, bridge, cycling, walking, bird watching and Qi Gong. We also facilitate and support new interest groups; ideas are always welcome!

We're keen to welcome you.

Go to www.mertonu3a.org.uk to learn more or www.mertonu3a.org.uk/groups and click on "Guide to Activities". We have had to adapt but COVID-19 isn't stopping us! A membership application form is on the home page.

Here's a great "stocking filler" idea for Christmas! You can pay for a friend or relative to join Merton U3A for only £16 so they can enjoy great access to talks, activities and discussion groups.

Contact us at membership@mertonu3a.org.uk

Wimbledon Park Hall

your community Hall

at 170 Arthur Road, Wimbledon Park

All booking information can be found at www.wimbledonpark.com

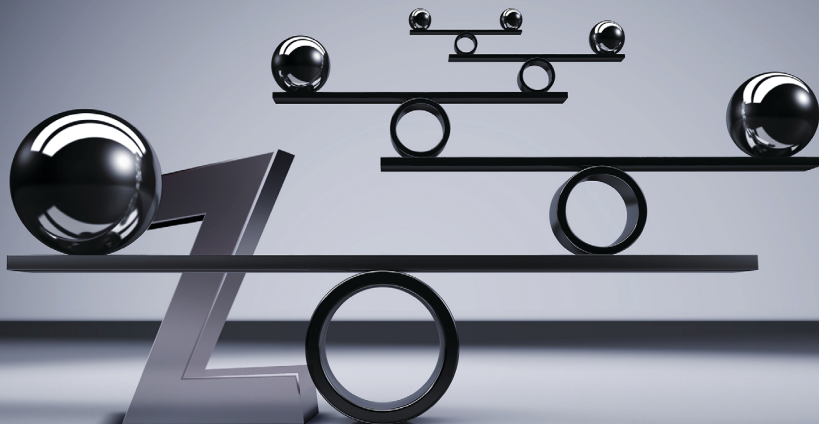
or

Email inquiries to: wimbledonparkhall@gmail.com

Wimbledon Park Ward Crime Statistics															
Sep 2020	2019			2020								12 Month Total	Ave per Month	% of Total	
	Oct	Nov	Dec	Jan	Feb	Mar	Apr	May	Jun	Jul	Aug				Sept
Anti-Social Behaviour	16	18	9	10	10	17	55	62	46	35	19	20	317	26	28
Violence and Sexual Offences	15	18	11	12	13	11	24	16	23	27	13	19	202	17	18
Vehicle Crime	20	11	20	30	17	20	17	7	16	13	12	13	196	16	18
Other Theft	5	7	8	8	5	14	6	1	10	11	9	9	93	8	8
Burglary	3	11	6	12	5	5	2	5	10	11	3	7	80	7	7
Criminal Damage and Arson	4	3	3	2	5	4	4	4	2	5	4	4	44	4	4
Drugs	5	5	0	6	5	2	3	4	7	0	1	3	41	3	4
Public Order	5	9	1	1	3	1	3	4	6	3	1	3	40	3	4
Shoplifting	0	3	2	6	3	0	1	4	3	2	4	4	32	3	3
Bicycle Theft	2	1	0	0	0	3	1	0	5	11	2	2	27	2	2
Robbery	1	2	4	5	1	0	0	0	2	1	0	6	22	2	2
Theft from the Person	3	0	1	1	2	0	0	0	0	0	0	1	8	1	1
Other Crime	0	0	0	0	0	1	0	0	3	1	0	2	7	1	1
Possession of Weapons	2	0	0	0	1	0	2	0	0	0	0	0	5	0	0
Total	81	88	65	93	70	78	118	107	133	120	68	93	1114	93	100

Figures from UKCrimeStats

1114



We are the UK's first genuine Alternative Business Structure (ABS) regulated by the SRA, ICAEW and RIBA, offering end to end support for modern entrepreneurs, wealthy individuals, property developers and investors.

Bringing together traditionally separate professional services, we deliver structured solutions that are cost effective, tax-efficient and quality driven; simplifying complexity and delivering joined up intelligence, allowing you to focus on what you do best.



z | group

accountants | solicitors | architects | surveyors

COMPLEXITY SIMPLIFIED

Through our unique collaborative 3D approach, we deliver structured solutions for entrepreneurial businesses and individuals

ACCOUNTING TAX | personal tax & wealth planning, financial accounting & corporate tax, SME business support, property

LEGAL | corporate & commercial law, property, wills, probate and estate planning

ARCHITECTURE | full architectural and interior design services

SURVEYORS | valuations, surveys, leasehold, party walls

contact us: email info@zgrp.co.uk | phone 0208 944 1180

where to find us: Ibex House, 162-164 Arthur Road, Wimbledon., London, SW19 8AQ

follow us: @zgroup_london



Advent & Christmas with St Luke's Church Wimbledon Park



A fun activity for families.

Find the Christmas story in certain house windows around Wimbledon Park from 6th-20th December.

Complete the crossword quiz as you go and a winner will be picked on the afternoon of 20th December.

The trail map and crossword quiz will be in the St Luke's Christmas card, delivered to all in the parish and on the website from the start of December.

We hope you can also join us for a service and carols. Details will be in the Christmas card and on our facebook page and website during December.

www.wimbledonchurch.co.uk
www.facebook.com/wimbledonchurch

A1CARS

24 HOUR MINICAB SERVICE

FIXED PRICES FOR AIRPORT TRANSFERS

020 8947 1717

020 8947 2299

Book online: www.a1carslondon.co.uk



**Transport
for London**

Officially licensed private hire operator
Licensed by Transport for London

Oakley Locksmiths Ltd

We are a family run business based in Southfields since 1987. Our company offers free no obligation quotations on all types of security for both the residential and commercial markets. Our fully trained locksmiths supply and fit all makes of locks and key cutting in our shop starts from £2.50.

81 Replingham Road

Southfields, SW18 5LU

020-8871-1238

www.oakleylocksmiths.co.uk

DECORATOR HANDYMAN

Established in Southfields since 2002,
I offer a complete painting, decorating
and handyman service to local
residents at reasonable prices.
Excellent references available.

To discuss your requirements
and to arrange a free quotation
without obligation,
please call Nigel Plumble:

(H) 020 8871 9687

(M) 07939 310292

W.P.R.A. Committee 2019/2020

Spike Clarke	Home Park Road
Ingrid Dickenson	Havelock Road
Beate Eberhardt	Crescent Gardens
Pamela Healy - Advertising/Planning	Brooklands Avenue
Nigel Israel	Ryfold Road
Mamoonah Jahangir	Durnsford Road
Paresh Modasia	Home Park Road
Michael Tyler - Planning	Cromwell Road
Iain Simpson - Chairman & Newsletter Editor	Home Park Road
Peter West - Planning	Cromwell Road
Cllr Janice Howard, ex officio	Dora Road
Cllr Oonagh Moulton, ex officio	Melrose Avenue
Cllr Ed Gretton, ex Officio	Braemar Avenue

Adam's Plumbing
Southfields, SW18

With 25 year's experience, working in the Southfields area, I undertake all household plumbing and heating jobs.

For a prompt call out, or to arrange a free estimate, please contact me on:

07956 324460
adams_plumbing@hotmail.co.uk

Advertising in this magazine.

Contact Pamela Healy

pam.2015@outlook.com

VOLUNTEERS NEEDED TO DELIVER OUR NEWSLETTER

IN

Ashcombe Road and Gap Road

If you can spare an hour or so three times a year, we would be very grateful. We will deliver the newsletters to your door for distribution.

**If you would like to help, please contact Pamela Healy at
pam.2015@outlook.com**

Index of Advertisers

Accounting	ABK Accountancy and Tax Services	7
Activities/skills for 55plus	U3A	35
Architects	Tectonics	27
Carpenter	Daniel Smith	13
Engineering	Naismith Engineering	25
Gifts and Cards	Chalk	13
Locksmiths	Oakley Locksmiths Ltd	39
Legal and Financial	Z Group	37
Minicab service	A1 Cars	39
Schools	Little Learners	43
Painting & Decoration	Nigel Plumbe	39
Plumbing	Adam's Plumbing	41
Restaurants	Chicken Cottage	44
Solicitors	McGlennons	21
Stain Glass & Leaded lights	Coriander	11
Windows	SPS Timber Windows	2



**Little
Learners**



Nurseries in Wimbledon and Southfields

- **Offering childcare Monday – Friday**
- **Flexible hours between 9am – 3.00pm**
- **Wrap around care from local schools**
- **Grant funding available**

Little Learners In the Gardens
Coronation Gardens
95 Pirbright Road
Southfields
London Sw18 5NB

07749 377 253 or 0208 870 4748
littlelearnersinthegardens@hotmail.com

Little Learners In the Park
Durnsford Recreation Ground
Wellington Road
London
SW19 8EY

07749 899 976 or 0208 944 0101
littlelearnersinthepark@gmail.com

www.littlelearnersnurseries.com

WISHING YOU ALL
MERRY CHRISTMAS
&
HAPPY NEW YEAR



...it's all about the taste!



deliveroo

OPEN 12NOON TO 11PM MON-SUN
393 DURNSFORD ROAD | WIMBLEDON
LONDON SW19 8EE | 0208 947 2179

WWW.CHICKENCOTTAGE.COM

Uber
Eats