



Wimbledon Park Residents' Association

A Vaccinating Journey

JUNE 21

MAY 17

APRIL 12

MARCH 29

Spring 2021

wimbledonpark.com

sps timber windows



■ box sash windows ■ casement windows ■ doors ■ plantation shutters



- Award-winning sps timber windows is celebrating its 23rd year as South West London's most established specialist in the design, manufacture, installation and finishing of premium quality, energy-efficient, bespoke timber windows and doors, including
- Box sash windows, casement windows, front doors, French doors, folding sliding doors.
- Custom made to "A" rated specifications in Accoya® wood.
- Accurate representation of period designs and features.
- Double-glazed and draught proofed.
- Contact us for a quotation.
- **Wimbledon Park Residents' Association Easter 2021 Offer:**
Receive up to £150 John Lewis Vouchers (T&C's apply).
Quote offer code WPRA.

Showroom 61 Revelstoke Road, Wimbledon Park, SW18 5NL

www.spstimberwindows.co.uk

info@spstimberwindows.co.uk

020 8879 3443



Easter edition 2021

Contents

Chairman's Report	4 & 5
Update from Stephen Hammond MP	6
Update from Councillors	8 & 9
Museum of Wimbledon	10 & 12
Durnsford Recreation Ground	14 & 15
Friends of Wimbledon Park (FOWP)	16,17,20 & 21
Wimbledon Park and proposals by the AELTC	22,24 & 25
Why Flood our Public Park	26 & 27
Join the WPRA	28 7 29
Saving Dorset Hall	30 & 31
Property development in Wimbledon Park	32 & 33
Monthly Crime Statistics (Neighbourhood Watch)	34
Air Pollution monitoring (Pamela Healy)	35
Crime Statistics (compiled by Ivan Scott)	36
Wimbledon Park Community Trust	38 & 39
Committee List	40
Advertisers Index	42

**All advertising enquiries to: Pamela Healy
Email: pam.2015@outlook.com**

**Editorial help needed. Contact Iain Simpson on 020 8947 1301
email: iainsimpson@imi-consulting.com**

Chairman's Report

Green spaces

We are extremely fortunate to have several green spaces available to us in the Wimbledon Park area (not to mention Wimbledon Common). During lockdown, I am sure everyone's appreciation for our local green space has grown substantially. Unfortunately, the lack of proper management in Wimbledon Park has created an obstacle to total enjoyment. A continual problem is the lack of timely repairs to the grass areas which have been occupied by commercial activities and inevitably suffer accordingly.

Another area of concern is the maintained height of the lake. When there is a period of heavy rain, the lake overflows the dam and causes extensive flooding (see article on Pages 26 and 27). Years of asking the Council to lower the level of the lake continue to fall on deaf ears.

The project to revitalise the Pocket Park at the junction of Gap Road and Plough Lane - now called Gap Road Gardens - is very near completion and has attracted a small group of keen local volunteers, which is great.

We are also looking forward to the improvements scheduled for Durnsford Rec.

AELTC Development plans

Most residents will be aware that, since the acquisition of Wimbledon Park Golf Course, the AELTC have been working on their plans for the golf course. They have been making significant efforts to engage with local resident association groups and others to establish views on what improvements we might like to see incorporated.

Two ideas that have gained popularity are the idea of a walk around the lake and a possible route from Wimbledon Park Station, through the park and golf course to the main stadium.

At the heart of their plans is the desire to build a significant number of courts on the golf course so that they can incorporate the Qualifying matches currently held in Roehampton a week before the start of the 'Fortnight', alongside the Church Road complex. This means building a number of courts



Lancelot Capability Brown (1716-1783) was an English landscape gardener who designed over 170 parks for the English aristocracy during the second part of the 18th century. Known as "England's greatest gardener", many of his parks are still in existence today. The Lake is the last vestige of his work at Wimbledon Park.

and also associated support buildings on what is considered a very special landscape originally designed by Lancelot 'Capability' Brown. Wimbledon Park is a Grade II* listed park, in a Conservation area and is considered 'at Risk' by Historic England. Any proposed development will have to gain listed building consent, and the support of local residents and other bodies such as Historic England.

Museum of Wimbledon refurbishment

I have provided updated information about this important and exciting project on pages 10 and 12. The project is moving along well and recently a crowdfunding website has been established to help raise the funding to the required level of £150,000. All donations, however small, are welcome. Every little bit helps. This is your Museum and I hope that you will feel inclined to contribute.

Save Dorset Hall

On pages 30 and 31 you will see an article about a current project to save this house from neglect and hopefully turn it into a community asset and part Suffragette Museum. This is an important house once lived in by Rose Lamartine Yates, a famous local suffragette.

It is timely that, as I write, we are in Women's History Month, which includes the celebration of International Women's day. Merton's history has been shaped by many remarkable women, including 18th century socialite and political lobbyist Georgiana Spencer, social reformer Josephine Butler and temperance campaigner Priscilla Pitt - and, of course, suffragette Rose Lamartine Yates.

Merton Heritage Services have created a new set of women's history resources at www.merton.gov.uk/memories.

The project to save Dorset Hall is being led by Barbara Gorna who is a current, well-known campaigner for women's rights.



Best Wishes for Easter

*Photos and captions
courtesy of
Tony Borkowski*

Georgiana Cavendish, the Duchess of Devonshire (1757-1806) was a well-known Georgian beauty, socialite, and style icon. She was famous for her charisma, political influence, socialising and gambling. The Duchess is the great-great-great-grand aunt of Lady Diana Spencer, the mother of Princes William and Harry. Lived in Wimbledon Park, Married in St Mary's Church.

Update from Stephen Hammond MP

I am once again grateful for the opportunity to contribute to the Wimbledon Park Residents' Association newsletter. I would like to take this opportunity to wish you and your family a Happy Easter.

As I write this article at the beginning of March, I can only reflect how extraordinary the last 12 months since the first lockdown came into force have been. This has been an incredibly difficult year, with everybody impacted by Covid-19, either directly or indirectly. However, through these difficulties we have seen the already vibrant community spirit in Wimbledon and Wimbledon Park grow to meet the challenge, which has been inspiring to witness and participate in.

This was seen most recently here in Wimbledon Park during the period of surge Covid testing at the beginning of March. We saw the Dons Local Action Group and AFC Wimbledon Foundation volunteering to deliver information leaflets, local people volunteering at the test sites, and thousands of residents doing their bit and getting tested. Thank you to everyone involved.

Similarly, we have seen an amazing response locally to the vaccination programme, with our local NHS and volunteers providing an amazing service each day for those invited to be vaccinated. Locally new centres have been opened to ensure that there is plenty of capacity as we move through the age groups and provide second doses.

Local community spirit was also on show for all to see during the 5th year of 'Window Wanderland' on the Southfields and Wimbledon Park grids during the last weekend of February. It was great to see so many people take part, showing their creativity and giving people something to smile about on their daily walks around the neighbourhood.

March has also shown us there is light at the end of the tunnel, with the publication of the Government's road map out of lockdown. My hope is that, by the time this newsletter is delivered, the virus has declined to levels that allow us to move to Step 1, and the rule of six will apply outdoors in time for Easter, allowing families to reunite.

Wimbledon Park has always been an attractive and thriving place in which to live, work and play. It will be again! I remain committed to working with local shops and businesses to ensure that they can re-open successfully through the Summer and beyond, and they have the financial support they need until then. These businesses ensure our local high streets and shopping parades are vibrant, and they will need our support more than ever after an incredibly tough year.

As we head into Summer and move beyond the first cautious step of lockdown relaxation, it remains important to follow the rules and stay safe. This is the best way to ensure restrictions do not have to return again, and we can finally manage this virus.

Finally, as ever, I stand ready to assist. I can be contacted on stephen.hammond.mp@parliament.uk

ABK

A.B.K. ACCOUNTANCY & TAX SERVICES

For All Your Accountancy, Taxation and Business needs

- Accounts
- Taxation
- Self-employed
- VAT Returns
- Lettings Accounts
- Wages -PAYE
- Partnership Accounts
- Tax advice

- Book Keeping Services
- Management Accounts
- Self- Assessment Tax Returns
- Limited Company Accounts
- Company Formation
- Sub-contractors C.I.S.
- Tax Refunds

All services at competitive rates

59 Ashen Grove, Wimbledon Park, London SW19 8BL

Tel: 020 8947 9931 – Fax: 020 8879 3412 – Mob: 07989770847

Email: abk.accountancy@btinternet.com Website – www.abk-accountancy.com

An update from your Wimbledon Park Councillors – March 2021

Support for the Enhanced Testing Programme

One case of the South African Variant of Covid-19 found in the centre of our Ward has led to the whole Ward being asked to take an Enhanced Test over the week from Friday 26 February to 5 March.

We were active in supporting the rapid setting up of the 3 sites chosen across our Ward - two Mobile Testing Units at Wimbledon Park Golf Club and the Car Park behind Wickes off Plough Lane, along with the pick-up / drop-off Home Test Site at Church of Christ the King.

We wish to thank all the staff and volunteers supporting this effort at the sites and in particular the AFC Don's army of volunteers who put out over 5000 leaflets across the Ward. It has been a successful operation with the target of five thousand tests being completed within the week at these three sites.

At the time of writing we don't know the results, but do keep a watch on our FB page @WimbledonParkWardConservatives where we will post the results when we get them.

New Pocket Park – Gap Road Gardens

The new pocket park on the Plough Lane Crossroads – Gap Road Gardens – is coming along fantastically. A huge thank you to the volunteer residents who have continued to develop the park, replant the hedge and work safely through the cold weather of many weekends this year to sand and repaint the railings (thank you Patrick, Dimitry and 'team Friends of Gap Road Gardens'!).



We have finally established a water stand-pipe which will allow the hedge and flowers to flourish.

Traditional benches will soon be installed and the entrance arches completed, the turfing is nearly complete and wild flowers (cornflower and poppy) have been sown. Native bluebells and iris are to follow, as are bat-boxes (Galliard Homes are kindly helping with the bat-boxes).

For the record, the mixed native hedge comprises yew, hawthorn, hazel, privet, bird cherry, field maple, holly (possibly!), buckthorn, dogwood, beech and even a raspberry bush or two! Everyone who walks by loves the new park and it is a real community project. We look forward to enjoying the gardens as the better weather returns.



Car Parking Zones (CPZs) and Low Traffic Neighbourhood Schemes

In the first months of 2021 there has been much activity around parking and traffic. There has been an informal consultation on a Low Traffic Neighbourhood Scheme in Cromwell and Haydons Park Road on which we are awaiting the results.

A new CPZ scheme was consulted on in the Pitt Crescent and Durnsford Road areas, which was not supported. However, a majority have supported one for Gap Road as well as revisiting the CPZ closest to the new AFC Wimbledon Stadium and formal consultations are now taking place in these areas. We as your Councillors will support residents through the results and please do contact us.

News

We have recently heard that the Wandsworth Smugglers Way Amenity Site which is run by the Western Riverside Waste Authority will be asking everyone to book to use the site from 22nd March. Bookings can be made from 15 March. However, this will mean that, as Merton is not part of an agreement with this authority, residents will be unable to use it.

Sadly the Weir Road Recycling site was closed a few years ago and so we will now need to travel across the Borough to the Garth Road site. We have been lobbying Council officers to see whether a deal can be struck to allow residents on this side of Merton borough to continue to use the Wandsworth site otherwise we fear that increased pollution and fly-tipping will occur.

Better News

We understand that there is to be a review of the waste collection contract with Veolia for flats over shops, which are particularly causing concerns over waste spillage and fly-tipping in our shopping parades. We hope this will result in an improved collection system and a better environment for our shopping parades.

Cllr Oonagh Moulton Cllr Janice Howard Cllr Ed Gretton

Update on the Museum of Wimbledon Refurbishment Project

The project to refurbish our lovely Museum of Wimbledon at 22 Ridgway is making brilliant progress. We have recruited a wonderful professional team. Our Project Manager is Jason Lowe of Conservation Plus, a firm of specialist heritage project managers, whose recent work includes the visitor centres at the Weald and Downland Open Air Museum, and The Jewish Cemetery in Willesden, as well as new exhibition and display spaces in the crypt at Rochester Cathedral.

The new Museum will be designed by Philip Simpson of Philip Simpson Design, the designers on the Whitehall Historic House project, and at All Saints Church in Kingston. He also works regularly for the British Museum. Philip has produced some artist's impressions of what the new museum might look like. You can see a couple of them below.

The design work has begun this month, with workshops on the main themes and stories. The enormous task of packing away all the museum objects is almost complete. Meanwhile our fundraising is going well. We have raised almost £45,000 (including GiftAid) from individual donors, and have just launched a crowdfunding page at <https://crowdfunder.co.uk/museumofwimbledon>

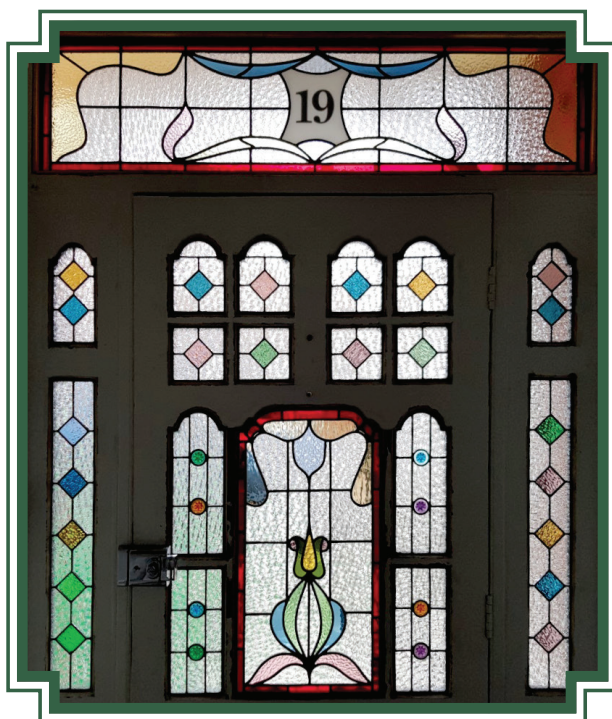
We would be so grateful for any donations!

See images also on page 12



Philip Simpson Design

**Traditional stained glass lead lights
designed, made, restored and repaired.**



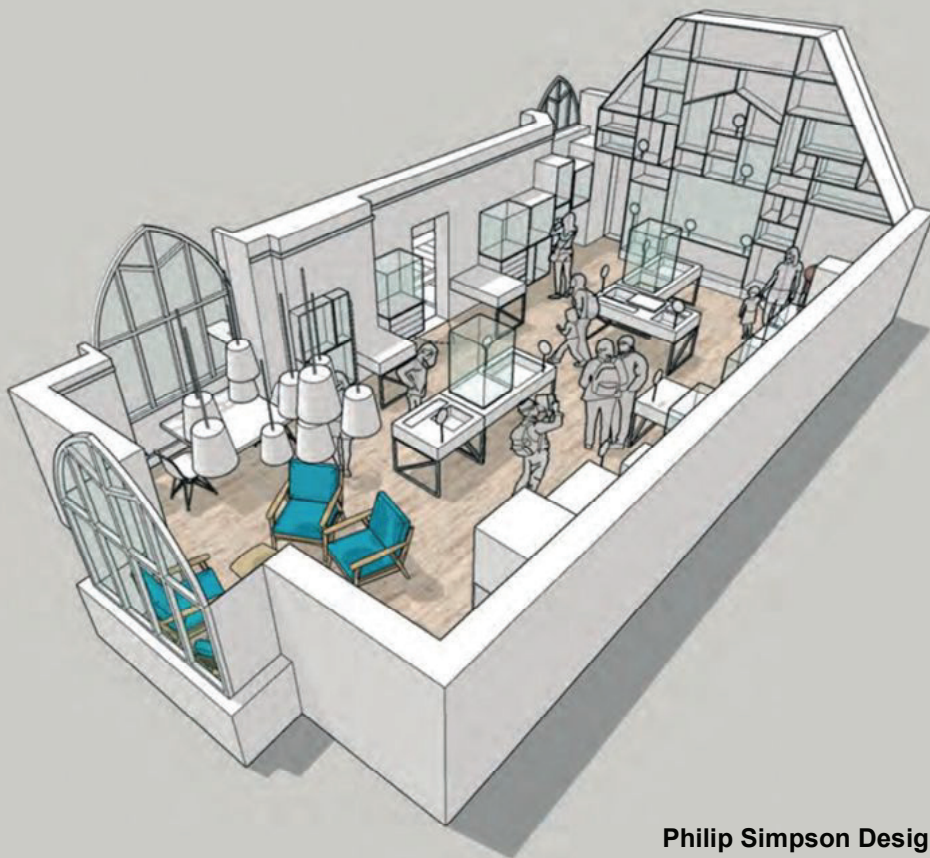
CORIANDER

TRADITIONAL STAINED GLASS AND LEADED LIGHTS

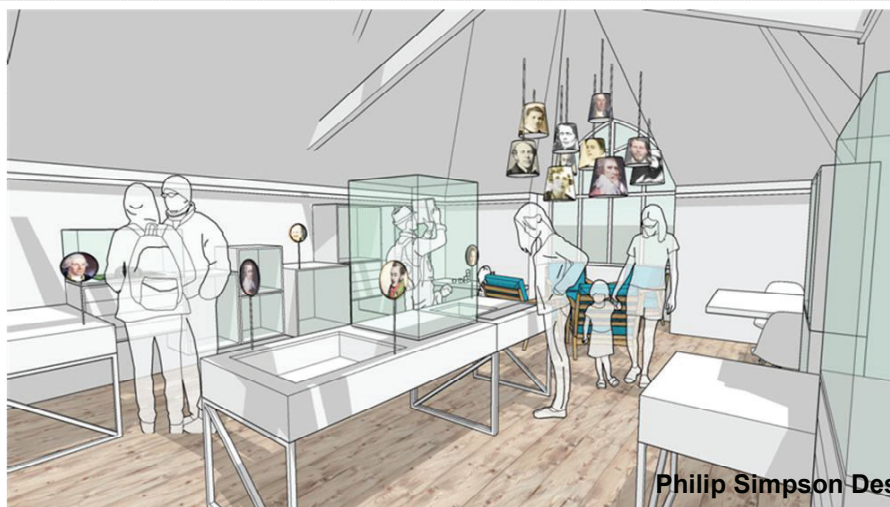


Your Local Studio:
**29 Kingston Road
Wimbledon
SW19 1JX**

020 8947 7635 • info@corianderstainedglass.co.uk



Philip Simpson Design



Philip Simpson Design



DANIEL SMITH

CARPENTER AND SPECIALIST JOINER

Beautiful, bespoke carpentry including:

- Alcove Bookcases • Cupboards
- Wardrobes • Bookshelves
- Sash Windows • Doors
- Home Offices • Radiator Covers

Tel: 020 8874 5205 Mobile: 07950 251026,

E-mail: daniel-smith1@hotmail.co.uk

48 Lavenham Road Southfields London SW18 5HE



* Gifts *
* Cards *
* Jewellery *
* Toys *

**Solve all your present problems
at Southfields' Aladdin's Cave**

Monday - Saturday 9.30 - 6.00

Sunday 10.30 - 4.30

41 Replingham Road, Southfields, SW18 5LT

www.chalkgifts.co.uk 020 8870 6125

DURNSFORD RECREATION GROUND

As reported in the Christmas edition of the newsletter, we secured funding of £32k from the Council for improvements to the Rec. I am pleased to report that the two new benches are on order, as is the outdoor gym equipment which will consist of:



Dips/Legs Raise; Pull Down/Shoulder Press; Cross Trainer; Recumbent Bike; Power Smart Energy Hand Bike.

These should be installed in the next couple of months ready for use by all.

Following discussions with Merton's Greenspaces and idverde, (who are responsible for the maintenance of the Rec), it was decided that instead of a row of trees we would plant three beds in line with the beds that are already in place between the school and the wood. Following advice from Merton's arborist, each bed will consist of a Swamp Cypress (*Taxodium distichum*) as the feature tree, planted around this with multi-stemmed Service Berry (*Amelanchier lamarchii*).

The Swamp Cypress (top right) is a deciduous conifer, conical in outline with light green linear leaves in spring turning red-brown in autumn. They can grow to over 20m and are well suited to wet ground in winter and hot summers. They will also complement the three Redwoods at the other side of the Rec.



Service Berry (below right) has white flowers in spring with red to purple fruits in the autumn which are popular with birds, but they can also be used to make jams and jellies. These will complement the fruit hedge, providing another area in which to pick fruit.

If there are funds remaining, we will also replace the two Rowan Trees that were vandalised two years ago.

Unfortunately, due to the pandemic we have been unable to carry out the usual autumn maintenance of the fruit hedge, so at this point it is unclear how much fruit the trees and shrubs will yield this year.



Regular users of the Rec will be aware that over the past couple of months the entrance from Lucien Road has been virtually impassable due to the muddy ground and flooding of the path. Hopefully, this will soon be a thing of the past as I have arranged with Merton Council to have the path on both sides of the toddlers play area widened to accommodate their service vehicles which are responsible for churning up the grass and making the area very muddy after heavy rainfall.

Pamela Healy

So, here we are back again, and this time Spring is on its way! Hooray! Everything seems to be looking more joyful overall as the lovely snowdrops attest to.



More space during lockdown.

Unfortunately, back in dark, cold January we were in lockdown (again) and people were being urged to 'stay local'. There was a surge of visitors to the park putting pressure on space and making social distancing difficult. Space was also restricted by the large field area being fenced off and saturated - we had been advised that the fencing would remain in place until the area dried out, as it was too wet to access. The FOWP requested that Merton Council open the running track

for joggers/runners and the path behind the stadium for walkers, during the park's opening hours, to try and ease some of the congestion.

Given the issue of muddy fields and lack of space on the busy public park paths, we also wrote to the All-England Lawn Tennis & Croquet Club (AELTC) asking if walks could be opened up on the golf course for the duration of this lockdown.

We keenly awaited their responses! Regrettably, it was a nay from both of them. The AELTC said that they 'appreciate that this will be disappointing news to local residents' but hoped that their 'approach to planning for the future use of the land demonstrates that (they) very much have community benefits in mind' when the land comes under their direct management in the future. Merton Council's response was to urge us to ask people 'to avoid going to crowded parks and greenspaces and find alternative ways to exercise, be it walking around the streets, or staying at home'. No joy!

There was continuing frustration that parts of the park's Big Field had been continuously fenced off for over a year - by damage caused by commercial activities held in 2019! The fencing particularly inconvenienced people trying to walk around the park, especially at 'pinch points' close to the paths. Finally, after much input from Councillor Oonagh Moulton, Wimbledon Park Ward, some of the fencing was removed - but not until late February. The quest continues to open up

the two stadium gates so that the wider Stadium Lane path can be used as a walk through to the lake. This would allow walkers an alternative to the narrower path around the stadium.

Remedial works

The Pines and Needles site is still in dire need of repair – it requires more than just TLC! Merton Council has said that this site will be ‘fixed’ in mid-March, although this depends on the weather.



There is also a remediation plan for the old bowling green, but this will not be done until after the children’s funfair has taken place.

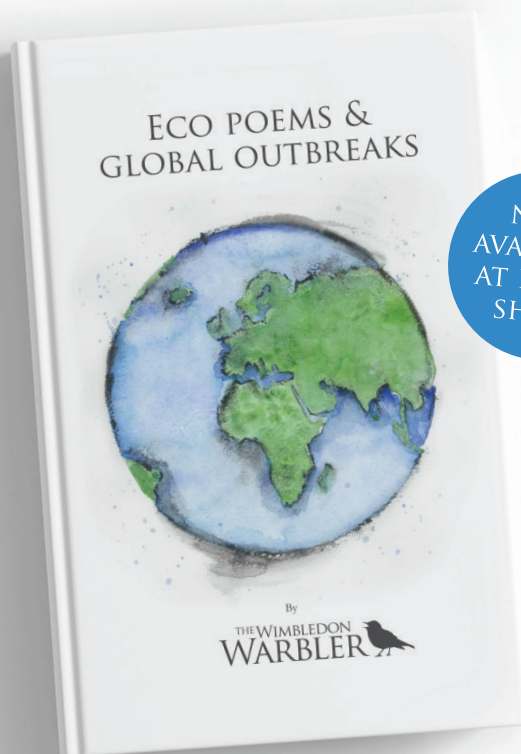
Changing weather landscapes



THE WIMBLEDON WARBLER



A new Local Poet in our midst...



NOW
AVAILABLE
AT LOCAL
SHOPS

The Tennis Gallery, 112 Arthur Road, Wimbledon Park SW19 8AA
www.tennisgallerywimbledon.com

The Patio Bistro, 397 Durnsford Road, Wimbledon Park SW19 8EE

Wimbledon Books, 40 High Street, Wimbledon Village SW19 5AU
www.wimbledonbooks.co.uk ISBN: 978-1-5272-6246-1

Eco Poems & Global Outbreaks by The Wimbledon Warbler is a small selection of poems by a bold new voice in UK poetry, 76 year old Bob Ball.

To lift his spirits during lockdown, and to remind us of the fragile beauty of the world beyond our homes, he has penned over 50 poems and published Eco Poems & Global Outbreaks including wonderful illustrations by Lisa LaMarca (Insta - lisalamarca4).



Bob and his wife Christine moved to Wimbledon Park 51 years ago and raised their 3 children here and has dedicated the book to his two grandchildren and the future of all our children. The Warbler's story begins here in Wimbledon Park; on his blackboard, Bob would chalk an outline of the world along with his global thoughts that day. The idea to collect The Wimbledon Warbler's work in a volume was inspired by news of a competition set by Poet Laureate Simon Armitage and a book called 'The Invention of Nature' by Andrea Wulf.

The Wimbledon Warbler is gaining an audience on social media. During the first lockdown, friends (and stars of British TV and radio) deliver his planet-conscious verse: Lorraine Kelly OBE, Suzy Aitchison (daughter of the late, great Dame June Whitfield DBE) and Gyles Brandreth recite his poems on the Wimbledon Warbler's YouTube Channel.

The poem 'Bees & Trees' from Bob's book is helping to support the Loving Earth Project www.lovingearth-project.uk and www.sustainablemerton.org

Very much a reluctant local literary hero, he claims "I don't pretend to be anything other than an enthusiastic amateur who can't spell and is iffy at grammar!"

It's available now as a coffee table poetry book from local businesses (see opposite page) from Amazon, or as a download for Kindle.

During late January we experienced snow and heavy rain both of which impacted differently on the park. The snow delighted both adults and children alike and it was so lovely to see people enjoying themselves in the snowy landscape.

'Sharp drives the rain, sharp drives the endless rain.

The rain-winds wake and wander, lift and blow.

The slow smoke-wreaths of *vapor to and fro

Wave, and unweave, and gather and build again.' 🌧️

by Sir Charles George Douglas

***Canadian spelling**

An extract from this poem seemed apt here.

The heavy rain caused some overtopping of the dam and flooding in the public park. This is a regular occurrence, and the puddles gave much joy to children in particular. Dave Dawson, our ecological advisor, who writes a monthly blog, alerted us to the fact that 'there is a risk that a slightly greater rainfall event will come along and cause extensive flooding downstream'. For more information about this please go to <https://davegdawsonwp.blogspot.com/>

Update on Wimbledon Park Lake Project

We have had a series of meetings with Merton Council and their technical team led by Prof. Andy Hughes re this project. Talks are continuing. It is anticipated that the lake works will commence in August of this year and be completed by January 2022. For more information, please go to merton.gov.uk and look for Wimbledon Park Lake Project.



McGLENNONS Solicitors

Providing legal services in Wimbledon Park since 1995. We specialise in:

Wills & Lasting Powers of Attorney

Probate & Estate Administration

Residential Conveyancing

Leasehold Extensions & Freehold Enfranchisement

Landlord & Tenant

Dispute Resolution & Family Law

No charge – 20 minute initial consultation



Conveyancing
Quality



William Essex – Principal
157 Arthur Road London SW19 8AD

Tony Brown
Tel: 020 8946 6015

Barbara Morris
www.mcglennons.co.uk

Our new logo is coming!

In December 2020 we put an advert on our website and various social media outlets to see if we could find a volunteer Logo Designer. We felt it was time for a change and to have a more engaging and inspiring new logo identity. Quite a few people showed interest in this project, which is fantastic given that they would be giving of their time Pro Bono. Ultimately, we had two very different and exciting designs to consider. I am delighted to say that the Executive Committee of the FOWP have now given the 'go ahead' to one of those designs. It is nearly there! All will be revealed once the concept has been completed. The designer has kindly volunteered to write an article of how the logo came about and the inspiration behind it in the near future. So, exciting times for us!

And finally, Let's hope next time we 'meet' we can be in more celebratory mood as, hopefully, the dark COVID-19 days will have receded.

For more news, please follow us on our Facebook page - Friends of Wimbledon Park

Twitter FriendsoWP

Website: friendsofwimbledonpark.org.uk

Amelia Obertelli-Moriarty

WIMBLEDON PARK AND THE PROPOSALS BY THE AELTC

There is little doubt that the pandemic has affected all areas of activity in our society and our area, Wimbledon Park, has not been immune to its effects.

From the point of view of our built and landscaped environment, it's clear that the building industry has remained active mostly in terms of alterations, improvements and maintenance to the existing residential housing stock. There is hardly any street where there are no building works taking place, while our green areas, in particular Wimbledon Park, have seen a tremendous increase in daily use by the local residents.

Most of the improvement work to the existing residential stock does not affect the character of the neighbourhood. But, in some areas such as, for example, Arthur Road, the demolition of big, older houses on larger plots of land to give way to a proliferation of new small residential developments of evident less design quality and appearance is clearly detrimental to the character of the area almost by stealth.

To a degree it is easier for our community to scrutinise larger projects at Planning Stage when applications for development are lodged with Local Authorities, in our case Merton. However, in most cases, larger projects attract attention for compliance with major technical policy issues and the debate about the impact on the character of the area may be completely over-looked, a case in point being the emerging new residential development, The Stadia in Plough Lane.

Another large development on the horizon that will have a big impact on our neighbourhood is related to the proposals for the new extended tennis facilities on the grounds of the extant Wimbledon Park Golf Club, and its potential impact on what is left of the original Wimbledon Park and surrounding area.

This prospect arises from the acquisition by the All England LawnTennis Club of the site of the Golf Club. The proposals for the site are the subject of a revised Masterplan by the owners and are not yet in the public domain, hence it would be premature to speculate as to its nature.

We can, however, look at the existing Merton Council Planning Policies that refer to Wimbledon Park for guidance as to what could be allowed to take place. Wimbledon Park also falls partly into Wandsworth, so it would be reasonable to assume that both Councils will liaise as necessary to develop a coordinated set of policies for this purpose.

With regard to Merton Council, it seems sensible to look for guidance at the New Local Plan whose adoption is expected imminently during the winter 2021.



Arthur's Café

**Open Monday to Saturday inclusive
8.00am to 6.00pm**

Next to Wimbledon Park Hall at 170 Arthur Road.

Great Food – Great Coffee – Great Service

Catering available for all kinds of parties

Call Yasmin on 07958 598823

Under Policy N3.6, the New Local Plan states: ‘Recognise the importance of Wimbledon Tennis Championships, support the continued upgrade and improvement of the AELTC’s facilities either side of Church Road and at Raynes Park to maintain its global position as the best grass Grand Slam tennis competition and to provide economic, community and sporting benefits locally’.

Under Site Allocation Wi3, Site description, it is noted:

‘AELTC now owns the former golf course in Wimbledon Park and proposes that this becomes part of the hosting estate for the Wimbledon Championships, enabling the whole site to support the qualifying rounds and the Championships themselves by 2030’.

‘The golf course is part of a Capability Brown designed Grade II* Registered Park and Garden (along with Wimbledon Park and the Wimbledon Club) and is designated Metropolitan Open land, a Site of Importance for Nature Conservation, designated Open Space and within a Conservation Area. Any tennis related development on the golf course will need to respond to these sensitive designations’.

‘Wimbledon Park Golf Course is currently an 18 hole golf course with club house and maintenance facilities. This use will cease from January 2022’.

Time is all of a sudden becoming an issue, as temporary changes to the Golf Club land use could be expected to gradually take place from as early as for the 2022 Championships.

Certainly we all understand the importance for Wimbledon of ensuring the long-term success of the AELTC and the Championships. The content, scale and timing of the proposals will be the subject of extensive consultation with all stakeholders at many levels, and we residents of the Wimbledon Park Association will no doubt eagerly participate in a constructive debate to promote a masterplan that will take on board the historic characterisation of the site identified in the emerging New Local Plan.



AELTC’s work in progress on the current improvements to its Somerset Road junction with Marryat Road facilities.



**When temporary semi-permanent
white bubbles become too many?**

**Will the long views of Wimbledon Park
be respected?**



**Mario L Avendano, RIBA
March 2021**

WHY FLOOD OUR PUBLIC PARK?

When we enjoy the lakeside in Wimbledon Park, we may not realise we are on the crest of the dam that holds back the lake. New, national safety criteria require works to prevent this dam from failing. Failure would threaten property, life and limb downstream.

The lake is controlled by a weir at the south end of the dam. This is hidden in Ashen Grove Wood, just through the fence from the big children's play area. Flow from there goes underground to where the brook issues just behind the toilet block near the café and waterfall. The weir is not very wide so when there is a big rainstorm the lake level rises to store much of the inflow. The lake drains down over the weir over the next day or two. This temporary storage serves to reduce ("attenuate") peak flows down Wimbledon Park Brook in the public park. Provided the culverts there are kept clear, there is little or no flooding around the brook.

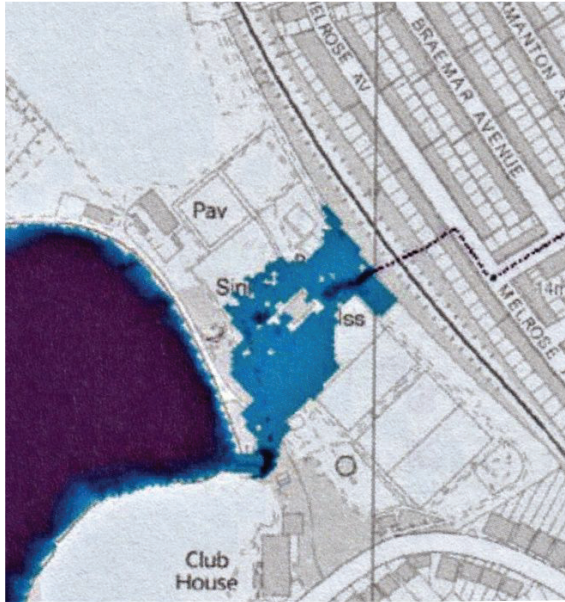
However, the weir is about 0.35 metres higher than was designed by Capability Brown in 1765 and we have recently discovered that even this certified level has been illicitly exceeded. This high level limits the amount of storm flow that can be stored in the lake, and so water often rises over the lakeside path to flow uncontrolled down into the public park. Most park users will know that the path between the bowls pavilion and the waterfall can be so flooded as to be impassable. Big, uncontrolled overtopping occurs every year and it is not just a nuisance in the public park, but it threatens the safety of the dam, so it must stop. In 2016, Merton Council began to examine options to prevent their dam from failing.

Government guidance is that the public should be consulted on new safety work because the public will be affected and there will always be options. The Friends of Wimbledon Park have sought details of the plans for four years, but it was not until late last year that we were consulted. We were told that the Council has a single proposed design for the works, not options, and the deadline is near. So, why am I worried?

The Council proposes to construct a 17-metre-wide weir and outfall to replace the present 1.3-metre-wide one, so damaging part of the ancient Ashen Grove Wood. Most of the lakeside path would be raised by 0.25 metres, sloping down to 0.05 metres at the lakeside. Part of the lakeside path near to the athletics stadium would not be raised, but reinforced so as to take floods larger than even the new wide weir can accommodate. Such huge floods are predicted to occur only once every 100 years or so, and so this area is not a worry. The worry is over the floods that are planned to go into the brook.

Lowering the level of the lake would help make the dam safe and it could greatly increase the flood storage, and hence the downstream flood attenuation. It would also help with drainage problems on the golf course and Wimbledon Club. Only the watersports people fear that they would suffer from less deep water. Storage would be doubled by a 0.2 metre lowering but the weir also needs to be narrow for attenuation to occur.

The Council's proposal is to lower the lake by just 0.05 metres, increasing storage by only 20%. Even worse, the weir is to be 13 times wider, so dumping



any sizeable flood quickly into the brook. There would be very little attenuation of flood flows. The Council has not yet said how they will deal with consequential, extensive flooding around the brook, affecting the children's play area, café, crazy golf and beach volleyball. Water could be a metre deep near the café. This will happen once every few years. The brook can be improved by opening out culverts and naturalising its shape and vegetation, but the flood would overcome any feasible improvements.

The lake has always been shallow, and accumulated sediment has decreased its depth somewhat, but this can be reversed with silt traps on the inflows and removal of sediment, whilst preserving Capability Brown's design.

The approximate area that would flood

A greater lowering of the lake level would store more flood water and allow a much narrower weir. The attenuated flows would no longer flood around the brook. Land drainage on the western side of the lake would improve. The Council has not explored this option. In the Council proposal, watersports will hardly suffer, but the public park will flood regularly. Of course, any design must balance the harm to different interests, but why not consult the public on the plan to flood the public facilities regularly?

Dave Dawson, local environmental scientist.

Why should I support the Residents' Association?

There has been a form of Residents' Association in Wimbledon Park since 1906. It provides a forum for discussing important local issues and a platform for action.

Since it's inception, the Residents' Association has helped hundreds, probably thousands of local residents, irrespective of religion, race or creed who have turned to the committee for guidance and support.

We regularly check local planning applications and have been very successful in opposing unsuitable developments. We promote planting and improvements in local parks and green areas. We work with the local police to help fight crime in your street and publish the crime statistics in our newsletter.

We led the initiative to redevelop Wimbledon Park Hall in Arthur Road so that once again we have our own community centre and community Café. We have put on fairs and shows in the past and supported numerous local campaigns, individuals and families faced with tragedy.

The Residents' Association has given the Wimbledon Park Community a solid and respected voice when dealing with Merton Council. An individual can achieve only so much, but as a team we can and do achieve so much more.

This area is growing and improving all the time. We are happy to put in time and effort on your behalf. But we cannot function without funds.

We need you to support your local Residents' Association ideally for 3 years, which is only £12. Twelve pounds for a 3 year period will help us pay for printing and stationery to publish this newsletter, computer and IT software to run the website, materials and equipment to keep the flowerboxes blooming in Arthur Road and other improvements.

Please take a moment to fill in the very brief form opposite.

We regret that unless an email address is supplied, we are unable to acknowledge receipt.

If you are already a member but are not sure of your current status, email wimbledonparkra@gmail.com and we will check it for you.

Thanks in advance for your support. It is hugely appreciated.

Iain Simpson
Chairman

To Join the Wimbledon Park Residents' Association

Please complete this form and return it to us with your payment:

Name _____

Address _____

_____ **Post Code** _____

Email*** _____

SUBSCRIPTION RATES

1 Year.....£5.00

3 Years.....£12.00

Donation.....£ _____

Payment Options:

By cheque - please make cheques payable to:

Wimbledon Park Residents' Association

Post to: WPRA, 56, Home Park Road, SW19 7HN

or

drop your subscription through the door of the Chairman, Iain Simpson, at 56 Home Park Road.

Email* If you would like to be included on an e-mail list for crime alerts, WPRA updates and information on other important local issues, please tick here**

☐

Please date...../...../.....

SAVING DORSET HALL



If you read the local press, you can't have failed to notice that a certain building has been getting a lot of coverage lately. Dorset Hall, Kingston Road, a place of refuge for suffragettes and sometime home of Rose Lamartine Yates and her husband Tom, has fallen into disrepair and is looking very sorry for itself. Rose was the leader of Wimbledon WSPU and a social and political reformer. On Sunday afternoons she regularly gave speeches on the Common with listeners hundreds strong. At one point the crowds became so large that dozens of extra police were called in to control them and fights often broke out, the women attending being assaulted. But she never gave up. A close friend of Emily Wilding Davison, she rushed to her bedside after she was knocked down by the King's horse at the Derby in 1913. Emily often stayed in Dorset Hall and Rose was one of the organisers at her funeral, with Tom representing the family at the inquest.

Dorset Hall, currently owned by Clarion but no longer fit for purpose, has been neglected for some years. It came to my notice in October 2020, and as a Women's Rights campaigner and former Director of Fawcett, I was determined to save it. Dorset Hall Group was hastily put together and Iain Simpson agreed to

come onto the group to advise.

It's been a tough ride. Ignored by Clarion and the Council until Historic England got involved, this Grade II listed building is now being made waterproof and scaffolding has been erected. Inside it is in a poor state and we are seeking funds to restore the building and make a community hub. Its position is ideal – it sits between a kindergarten and a care home. The social value of mixing the two groups is well known and we have enlisted Tom True, who previously worked with Foster on his museum project in Narbonne, to come up with a plan for future sustainable and practical use.

But we must first save the building, expensive to repair and difficult to earn its keep. Following that we need to look at what 'enabling development' might look like to support sustainability.

Three politicians have recorded a message of support for International Women's Day, Stephen Hammond MP, Paul Kohler of the Liberal Democrats and Jackie Schneider of Labour.

Nicola Davenport is running the website to keep everyone up to date – here is the link: www.dorsethall.org

Barbara Gorna



Interior damage



Scaffolding going up

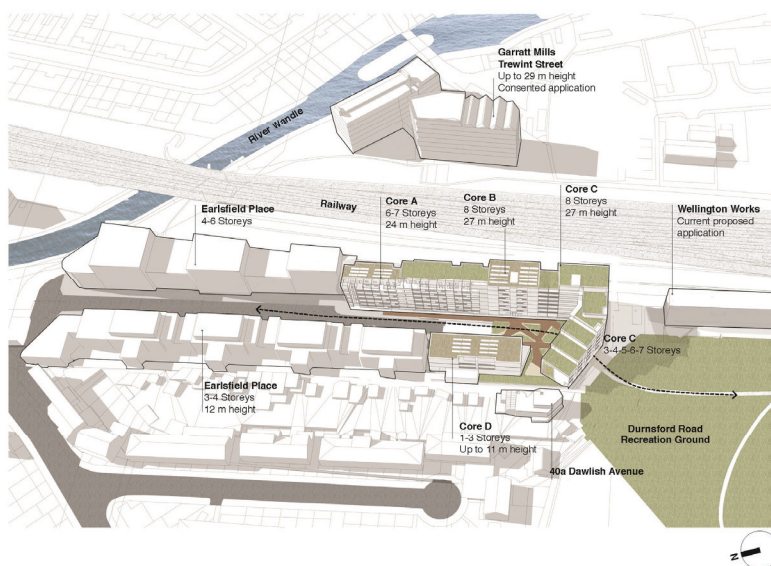
PROPERTY DEVELOPMENTS

Wellington Works

In 2017 Goldcrest Land Developers applied for permission to develop 1-3 Wellington Works into flats. Their application was refused on appeal. In 2020 Goldcrest submitted 2 more planning applications for the site. Local residents made a number of appeals for refusal to the Council including a petition signed by over 100 local residents. The main cause of concern was the access route to the site down a narrow lane at the end of Dawlish Avenue. Thankfully both planning applications were refused in February this year. There were 6 reasons for the rejection of the application, the main one being that the 'narrow nature of the Dawlish Avenue access in combination with the likely vehicle movements along this access would fail to provide a safe and secure environment for pedestrians, cyclists and vehicles.' Local residents are obviously pleased that these applications have been refused. However, it remains unclear what Goldcrest intend to do with the site.

Rufus Business Centre

Although as yet no planning application has been lodged with Merton Council, there are plans to develop the Rufus Business Centre, which lies to the rear of the Haslemere Industrial site, now known as Earlsfield Place, and behind the Durnsford Recreation Ground.



Proposed site plan

The proposal is for four blocks ranging from 1 to 8 storeys, containing 96 flats with a mixture of 1, 2 and 3 bedroom properties and office units on the ground floor. The developer's justification for the height, which would be clearly visible from surrounding properties and the Rec, is that it is lower than the Garrett Mills development in Wandsworth, the other side of the railway line, which will be 13 storeys high. However, it is 2 storeys higher than Earlsfield Place. Once plans have been submitted to the Council we will be making representations with regard to the proposed height.

12a Ravensbury Terrace

This development is nearing completion. However, the new foot bridge over the river Wandle has still to be built, despite the fact that both Wandsworth and Merton Councils were in agreement and the Community Infrastructure Levy of £51k paid by the developers has been earmarked for the bridge. Merton Council says that it is proving difficult to progress as there are other parties involved including the Environment Agency and Network Rail and that at present it has other priorities including Wimbledon Park Lake and Bishopsford bridge. We will continue to press the Council to build this much-needed footbridge as soon as possible.

Pamela Healy



Wimbledon Park Hall

your community Hall

at 170 Arthur Road, Wimbledon Park

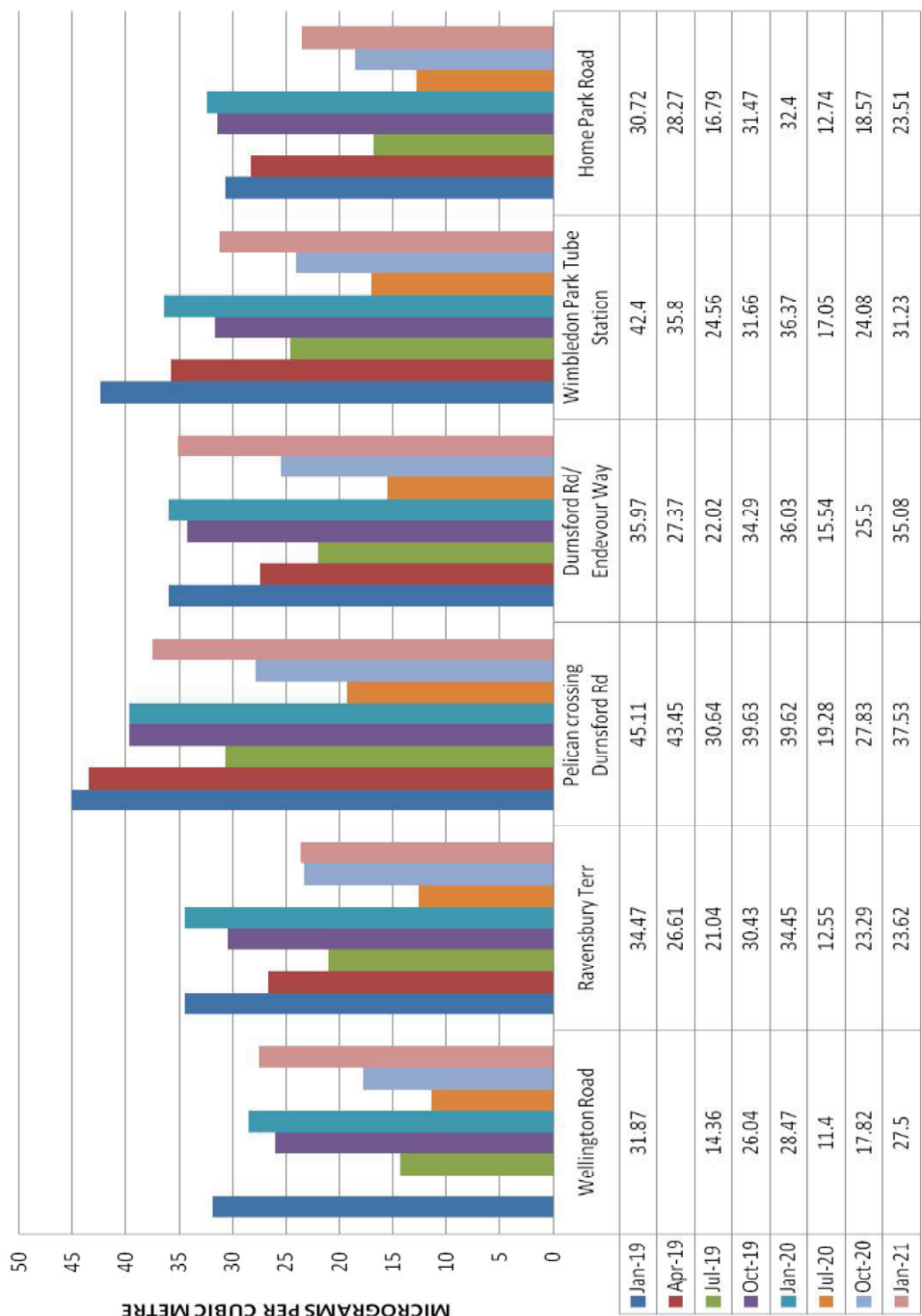
All booking information can be found at www.wimbledonpark.com

or

Email inquiries to: wimbledonparkhall@gmail.com

Wimbledon Park	Burglary - Residential	GAP ROAD	Victim had a parcel left by DPD outside her address in the communal hallway, when she returned the parcel was missing.	02/02/2021 12:06:00	02/02/2021 16:00:00
Wimbledon Park	Theft From M/V	WEIR ROAD	Reporting theft from work van by two male customers.	07/02/2021 11:55:00	07/02/2021 12:35:00
Wimbledon Park	Burglary - Residential	D U R N S F O R D ROAD	Both suspects found within a residential building which is situated on a building site.	09/02/2021 00:30:00	09/02/2021 00:47:00
Wimbledon Park	Burglary - Residential	ALBA MEWS, REV-ELSTOKE ROAD	By victim reporting two bikes stolen from his unlocked shed	09/02/2021 23:59:00	14/02/2021 10:30:00
Wimbledon Park	Theft/Taking of M/V	ARTHUR ROAD	Theft of M/V - Honda WW125 Motorcycle stolen from the venue address no CCTV.	10/02/2021 18:30:00	11/02/2021 07:30:00
Wimbledon Park	Theft/Taking of M/V	WEIR ROAD	Theft of victim's motorcycle from industrial estate - no keys taken - suspect(s) unknown	10/02/2021 20:30:00	11/02/2021 19:20:00
Wimbledon Park	Theft/Taking of M/V	ASHEN GROVE	By taking the car from the location.	12/02/2021 23:30:00	13/02/2021 02:45:00
Wimbledon Park	Theft From M/V	WEIR ROAD	Vehicles parked up over the weekend and the petrol has been taken. 150-200l of diesel was taken from the lorries over the weekend	14/02/2021 07:00:00	14/02/2021 07:30:00
Wimbledon Park	Burglary - Residential	R E V E L S T O K E ROAD	BURGLARY - BIKE STOLEN FROM VICTIM'S SHED - suspects are believed to have climbed the rear fence and forced their way into the shed	16/02/2021 20:00:00	17/02/2021 09:00:00
Wimbledon Park	Theft/Taking of M/V	CROMWELL ROAD	Theft of motor bike from front garden	16/02/2021 22:30:00	17/02/2021 02:00:00
Wimbledon Park	Theft/Taking of M/V	D U R N S F O R D ROAD	Unknown suspect has stolen the victim's vehicle from the driveway outside his home address. There is no CCTV coverage or other leads to progress the investigation.	17/02/2021 23:30:00	18/02/2021 07:45:00
Wimbledon Park	Burglary - Residential	HASLEMERE AVENUE	ENTRY GAINED TO REAR GARDEN OF ADDRESS WITH SHED ACCESSED. CYCLE STOLEN FROM REAR DRIVEWAY.	18/02/2021 16:00:00	20/02/2021 10:00:00

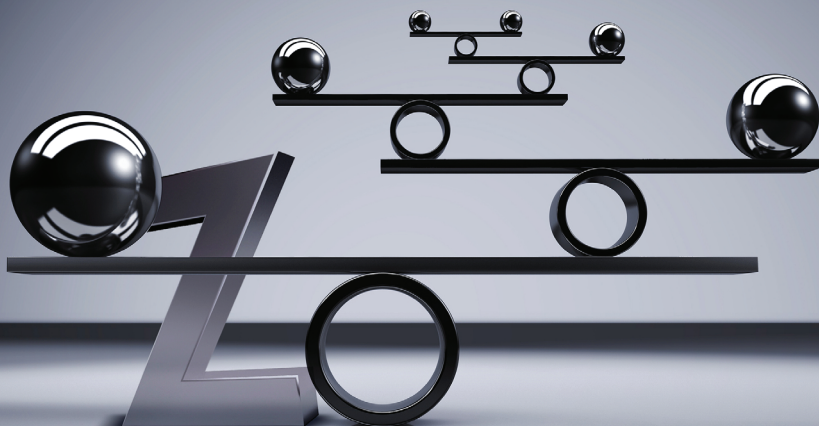
AIR POLLUTION MONITORING



Wimbledon Park Ward Crime Statistics																
Jan <u>2021</u>	Feb	Mar	Apr	May	Jun	Jul	Aug	Sep	Oct	Nov	Dec	2021		12 Month Total	Ave per Month	% of Total
												Jan				
Anti-Social Behaviour	10	17	55	62	46	35	19	20	30	24	15	22	22	355	30	32
Violence and Sexual Offences	13	11	24	16	23	27	13	19	18	18	12	9	9	203	17	18
Vehicle Crime	17	20	17	7	16	13	12	13	11	8	11	11	11	156	13	14
Other Theft	5	14	6	1	10	11	9	9	3	7	5	7	7	87	7	8
Burglary	5	5	2	5	10	11	3	7	4	6	5	5	5	68	6	6
Shoplifting	3	0	1	4	3	2	4	4	3	6	6	23	23	59	5	5
Criminal Damage and Arson	5	4	4	4	2	5	4	4	2	4	6	2	2	46	4	4
Public Order	3	1	3	4	6	3	1	3	5	4	4	4	4	41	3	4
Drugs	5	2	3	4	7	0	1	3	5	2	1	3	3	36	3	3
Bicycle Theft	0	3	1	0	5	11	2	2	2	0	2	2	2	30	3	3
Robbery	1	0	0	0	2	1	0	6	1	3	0	0	0	14	1	1
Other Crime	0	1	0	0	3	1	0	2	1	1	1	1	1	11	1	1
Theft from the Person	2	0	0	0	0	0	0	1	1	0	0	0	0	4	0	0
Possession of Weapons	1	0	2	0	0	0	0	0	0	0	0	0	0	3	0	0
Total	70	78	118	107	133	120	68	93	86	83	68	89	89	1113	93	100

Figures from UKCrimeStats

1113



We are the UK's first genuine Alternative Business Structure (ABS) regulated by the SRA, ICAEW and RIBA, offering end to end support for modern entrepreneurs, wealthy individuals, property developers and investors.

Bringing together traditionally separate professional services, we deliver structured solutions that are cost effective, tax-efficient and quality driven; simplifying complexity and delivering joined up intelligence, allowing you to focus on what you do best.



z | group

accountants | solicitors | architects | surveyors

COMPLEXITY SIMPLIFIED

Through our unique collaborative 3D approach, we deliver structured solutions for entrepreneurial businesses and individuals

ACCOUNTING TAX | personal tax & wealth planning, financial accounting & corporate tax, SME business support, property

LEGAL | corporate & commercial law, property, wills, probate and estate planning

ARCHITECTURE | full architectural and interior design services

SURVEYORS | valuations, surveys, leasehold, party walls

contact us: email info@zgrp.co.uk | phone 0208 944 1180
where to find us: Ibex House, 162-164 Arthur Road, Wimbledon., London, SW19 8AQ

follow us: @zgroup_london



The Wimbledon Park Community Trust

The Wimbledon Park Community Trust was incorporated in October 2013 and subsequently registered as a charity.

The objects of the charity are:

‘The promotion of the benefits of the inhabitants of Wimbledon Park and the neighbourhood thereof (hereinafter called the area of benefit) without distinction, by the advancement of education and the provision of facilities in the interests of social welfare for recreation and leisure time occupation, with the object of improving the conditions of life for the said inhabitants.’

The Trust has a lease (99 years from 2013) from The London Borough of Merton, on the space known as Wimbledon Park Hall including the adjoining Arthur’s Café at 170 Arthur Road.

The main income of the Trust is derived from renting the hall and café.

We would like to encourage local residents to contact us if they feel they can identify a person, organisation or project that would benefit from our support. It can either be a project that would benefit the local area or an organisation that is involved in work that would of benefit to residents in the local area. We are particularly interested in supporting an apprentice who lives in the local area.

General Guidelines:

- The total limit of awards will be £10,000 for the current financial year.**
- The maximum grant size that can be applied for is £5,000.**
- The minimum grant size that can be applied for is £500, except in exceptional circumstances.**
- The Trustees will have total discretion on awarding grants.**
- All applications must give proper detail of the intended use of the grant money and what the ultimate benefit/outcome will, or is expected to, be.**
- No grants will be given for general revenue purposes; only for specific or capital spending projects.**

Applications can be made at any time.

Please send them in writing to:

Wimbledon Park Community Trust,

56 Home Park Road, SW19 7HN.

All applications will be acknowledged.

The latest available accounts for the charity can be found at

www.wimbledonpark.com

Company No. 08727642

Registered Charity No. 1156930



Spring in the Rec

Oakley Locksmiths Ltd

We are a family run business based in Southfields since 1987. Our company offers free no obligation quotations on all types of security for both the residential and commercial markets. Our fully trained locksmiths supply and fit all makes of locks and key cutting in our shop starts from £2.50.

81 Replingham Road

Southfields, SW18 5LU

020-8871-1238

www.oakleylocksmiths.co.uk

W.P.R.A. Committee 2020/2021

Spike Clarke	Home Park Road
Ingrid Dickenson	Havelock Road
Pamela Healy - Advertising/Planning	Brooklands Avenue
Nigel Israel	Ryfold Road
Mamoona Jahangir	Durnsford Road
Paresh Modasia	Home Park Road
Michael Tyler - Planning	Cromwell Road
Iain Simpson - Chairman & Newsletter Editor	Home Park Road
Peter West - Planning	Cromwell Road
Cllr Janice Howard, ex officio	Dora Road
Cllr Oonagh Moulton, ex officio	Melrose Avenue
Cllr Ed Gretton, ex Officio	Braemar Avenue

Adam's Plumbing

Southfields, SW18

With 25 years' experience, working in the Southfields area, I undertake all household plumbing and heating jobs.

For a prompt call out, or to arrange a free estimate, please contact me on:

07956 324460
adams_plumbing@hotmail.co.uk

Advertising in this magazine.

Contact Pamela Healy

pam.2015@outlook.com

VOLUNTEERS NEEDED TO DELIVER OUR NEWSLETTER

IN

Durnsford Road and Gap Road

If you can spare an hour or so three times a year, we would be very grateful. We will deliver the newsletters to your door for distribution.

**If you would like to help, please contact Pamela Healy at
pam.2015@outlook.com**

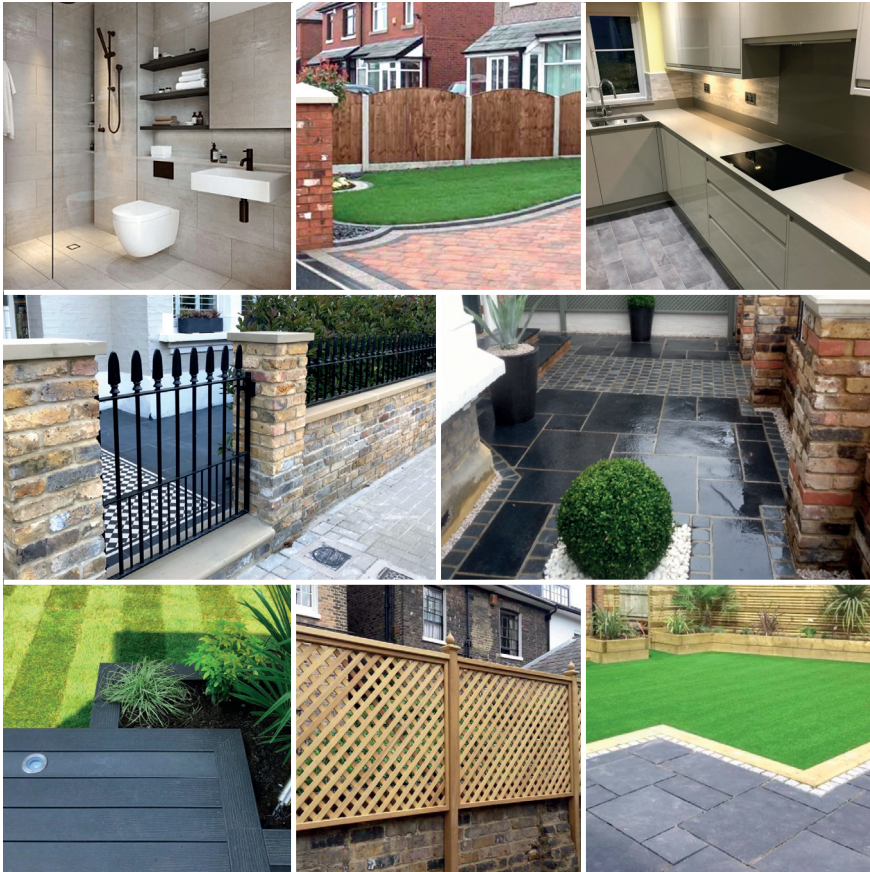
Index of Advertisers

Accounting	ABK Accountancy and Tax Services	7
Carpenter	Daniel Smith	13
Eco Poems and Global Outbreaks	The Wimbledon Warbler	18 & 19
Engineering	Naismith Engineering	25
Gifts and Cards	Chalk	13
Locksmiths	Oakley Locksmiths Ltd	39
Landscape Gardening and Building	K D Raynsford	43
Legal and Financial	Z Group	37
Schools	Little Learners	44
Painting & Decoration	Nigel Plumbe	39
Plumbing	Adam's Plumbing	41
Restaurants	Chicken Cottage	44
Solicitors	McGlennons	21
Stain Glass & Leaded lights	Coriander	11
Windows	SPS Timber Windows	2

| ESTABLISHED LOCALLY OVER 30 YEARS |

K.D. RAYNSFORD

| LANDSCAPE GARDENING AND BUILDING |



Paving and patios, brickwork and garden walls / All types of fencing, trellis and decking

New lawns and artificial grass / Tree pruning and garden tidy ups

Patio cleaning and waste removal / Painting and decorating interior/exterior

Kitchens and bathrooms fitted / Guttering and roofing repairs

Complete renovations to small repairs / All types of building work undertaken

Call 0800 2 118 618 / Mobile 07946 338 456

Free estimates and friendly advice



**Little
Learners**



Nurseries in Wimbledon and Southfields

- **Offering childcare Monday – Friday**
- **Flexible hours between 9am – 3.00pm**
- **Wrap around care from local schools**
- **Grant funding available**

Little Learners In the Gardens
Coronation Gardens
95 Pirbright Road
Southfields
London Sw18 5NB

07749 377 253 or 0208 870 4748
littlelearnersinthegardens@hotmail.com

Little Learners In the Park
Durnsford Recreation Ground
Wellington Road
London
SW19 8EY

07749 899 976 or 0208 944 0101
littlelearnersinthepark@gmail.com

www.littlelearnersnurseries.com